



JIM PETRO
AUDITOR OF STATE

STATE OF OHIO



**Auditor of State
Betty Montgomery**

88 East Broad Street
P. O. Box 1140
Columbus, Ohio 43216-1140
Telephone 614-466-4514
800-282-0370
Facsimile 614-466-4490
www.auditor.state.oh.us

January 21, 2003

The attached audit was conducted and prepared for release prior to the commencement of my term of office on January 13, 2003. Thus, I am releasing this audit under the signature of my predecessor.

Betty Montgomery

BETTY MONTGOMERY
Auditor of State

**JOSEPH BADGER LOCAL SCHOOL DISTRICT
TRUMBULL COUNTY**

TABLE OF CONTENTS

TITLE	PAGE
Schedule of Federal Awards Expenditures	1
Notes to the Schedule of Federal Awards Expenditures	2
Report of Independent Accountants on Compliance and on Internal Control Required by <i>Government Auditing Standards</i>	3
Report of Independent Accountants on Compliance with Requirements Applicable to Major Federal Programs and Internal Control Over Compliance in Accordance with OMB Circular A-133	5
Schedule of Findings	7

**JOSEPH BADGER LOCAL SCHOOL DISTRICT
TRUMBULL COUNTY**

**SCHEDULE OF FEDERAL AWARDS EXPENDITURES
FOR THE YEAR ENDED JUNE 30, 2002**

Federal Grantor/ Pass Through Grantor Program Title	Pass Through Entity Number	Federal CFDA Number	Receipts	Non-Cash Receipts	Expenditures	Non-Cash Expenditures
<u>U.S. DEPARTMENT OF AGRICULTURE</u>						
<i>Passed Through The Ohio Department of Education:</i>						
<i>Nutrition Cluster:</i>						
Food Distribution Program	N/A	10.550	-	\$20,701	-	\$22,647
School Breakfast Program	05-PU 01 05-PU 02	10.553	\$ 762	-	\$ 762	-
Subtotal -- School Breakfast Program			<u>5,602</u> 6,364	<u>-</u> -	<u>5,602</u> 6,364	<u>-</u> -
National School Lunch Program	LL-P4-2001 LL-P4-2002	10.555	11,107	-	11,107	-
Subtotal -- School National School Lunch Program			<u>81,773</u> 92,880	<u>-</u> -	<u>81,773</u> 92,880	<u>-</u> -
Total U.S. Department of Agriculture -- Nutrition Cluster			<u>\$ 99,244</u>	<u>\$ 20,701</u>	<u>\$ 99,244</u>	<u>\$ 22,647</u>
<u>U.S. DEPARTMENT OF EDUCATION</u>						
<i>Passed Through The Ohio Department of Education:</i>						
Grants to Local Educational Agencies Title I School Subsidy	C1-S1 01 C1-S1 02	84.010	-	-	26,159	-
Total -- Title I School Subsidy			<u>97,839</u> 97,839	<u>-</u> -	<u>89,501</u> 115,660	<u>-</u> -
<i>Special Education Grants Cluster:</i>						
Title VI - B Special Education Grants to States	6B-SF-2002	84.027	72,919	-	72,919	-
Safe and Drug Free Schools Grant	DR-S1-2002	84.186	4,910	-	4,910	-
Eisenhower Professional Development Grant	MS-S1-2002	84.281	6,431	-	5,448	-
Innovative Education Program Strategies Chapter 2 Subsidy	CS-S1 2002	84.298	6,471	-	6,051	-
Title VI - R Class Size Reduction Subsidy	CR-S1 02	84.340	31,132	-	26,844	-
Total -- U.S. Department of Education			<u>\$ 219,702</u>	<u>-</u>	<u>\$ 231,832</u>	<u>-</u>
Totals			<u>\$ 318,946</u>	<u>\$ 20,701</u>	<u>\$ 331,076</u>	<u>\$ 22,647</u>

The accompanying notes to this schedule are an integral part of this schedule.

**JOSEPH BADGER LOCAL SCHOOL DISTRICT
TRUMBULL COUNTY**

**NOTES TO SCHEDULE OF FEDERAL AWARDS EXPENDITURES
FOR FISCAL YEAR ENDED JUNE 30, 2002**

NOTE A - SIGNIFICANT ACCOUNTING POLICIES

The accompanying schedule of federal awards expenditures is a summary of activity of the District's federal award programs. The schedule has been prepared on the cash basis of accounting.

NOTE B- FOOD DISTRIBUTION

Nonmonetary assistance is reported in the schedule at the fair market value of the commodities received and disbursed. Monies are commingled with State grants. It is assumed federal monies are expended first. At June 30, 2002, the District had no significant food commodities in inventory.

NOTE C - MATCHING REQUIREMENTS

Certain Federal programs require that the District contribute non-Federal funds (matching funds) to support the Federally-funded programs. The District has complied with the matching requirements. The expenditure of non-Federal matching funds is not included on the Schedule.



STATE OF OHIO
OFFICE OF THE AUDITOR

JIM PETRO, AUDITOR OF STATE

Voinovich Government Center
242 Federal Plaza West
Suite 302
Youngstown, Ohio 44503
Telephone 330-797-9900
800-443-9271
Facsimile 330-797-9949
www.auditor.state.oh.us

**REPORT OF INDEPENDENT ACCOUNTANTS ON COMPLIANCE AND ON
INTERNAL CONTROL REQUIRED BY GOVERNMENT AUDITING STANDARDS**

Joseph Badger Local School District
Trumbull County
8317 Main Street
Kinsman, Ohio 44428

To The Board of Education:

We have audited the basic financial statements of Joseph Badger Local School District, Trumbull County (the District) as of and for the year ended June 30, 2002, and have issued our report thereon dated December 20, 2002. We conducted our audit in accordance with auditing standards generally accepted in the United States of America and the standards applicable to financial audits contained in *Government Auditing Standards*, issued by the Comptroller General of the United States.

Compliance

As part of obtaining reasonable assurance about whether the District's financial statements are free of material misstatement, we performed tests of its compliance with certain provisions of laws, regulations, contracts and grants, noncompliance with which could have a direct and material effect on the determination of financial statement amounts. However, providing an opinion on compliance with those provisions was not an objective of our audit and, accordingly, we do not express such an opinion. The results of our tests disclosed no instances of noncompliance that are required to be reported under *Government Auditing Standards*. However, we noted one immaterial instance of noncompliance that we have reported to management of the District in a separate letter dated December 20, 2002.

Internal Control Over Financial Reporting

In planning and performing our audit, we considered the District's internal control over financial reporting in order to determine our auditing procedures for the purpose of expressing our opinion on the financial statements and not to provide assurance on the internal control over financial reporting. Our consideration of the internal control over financial reporting would not necessarily disclose all matters in the internal control over financial reporting that might be material weaknesses. A material weakness is a condition in which the design or operation of one or more of the internal control components does not reduce to a relatively low level the risk that misstatements in amounts that would be material in relation to the financial statements being audited may occur and not be detected within a timely period by employees in the normal course of performing their assigned functions. We noted no matters involving the internal control over financial reporting and its operation that we consider to be material weaknesses. However, we noted other matters involving the internal control over financial reporting that do not require inclusion in this report, that we have reported to management of the District in a separate letter dated December 20, 2002.

Joseph Badger Local School District
Trumbull County
Report of Independent Accountants on Compliance and on
Internal Control Required by *Government Auditing Standards*
Page 2

This report is intended for the information and use of the audit committee, management, the Board of Education, and federal awarding agencies and pass-through entities, and is not intended to be and should not be used by anyone other than these specified parties.

A handwritten signature in black ink, appearing to read "Jim Petro". The signature is stylized with a large, looping initial "J" and a cursive "Petro".

Jim Petro
Auditor of State

December 20, 2002



STATE OF OHIO
OFFICE OF THE AUDITOR

JIM PETRO, AUDITOR OF STATE

Voinovich Government Center
242 Federal Plaza West
Suite 302
Youngstown, Ohio 44503
Telephone 330-797-9900
800-443-9271
Facsimile 330-797-9949
www.auditor.state.oh.us

**REPORT OF INDEPENDENT ACCOUNTANTS ON COMPLIANCE WITH REQUIREMENTS
APPLICABLE TO MAJOR FEDERAL PROGRAMS AND INTERNAL CONTROL OVER
COMPLIANCE IN ACCORDANCE WITH OMB CIRCULAR A-133**

Joseph Badger Local School District
Trumbull County
8317 Main Street
Kinsman, Ohio 44428

To The Board of Education:

Compliance

We have audited the compliance of Joseph Badger Local School District , Trumbull County (the District) with the types of compliance requirements described in the *U.S. Office of Management and Budget (OMB) Circular A-133, Compliance Supplement* that are applicable to each of its major federal programs for the year ended June 30, 2002. Joseph Badger Local School District's major federal programs are identified in the summary of auditor's results section of the accompanying schedule of findings. Compliance with the requirements of laws, regulations, contracts and grants applicable to each of its major federal programs is the responsibility of the District's management. Our responsibility is to express an opinion on Joseph Badger Local School District's compliance based on our audit.

We conducted our audit of compliance in accordance with auditing standards generally accepted in the United States of America; the standards applicable to financial audits contained in *Government Auditing Standards*, issued by the Comptroller General of the United States; and OMB Circular A-133, *Audits of States, Local Governments, and Non-Profit Organizations*. Those standards and OMB Circular A-133 require that we plan and perform the audit to obtain reasonable assurance about whether noncompliance occurred with the types of compliance requirements referred to above that could have a direct and material effect on a major federal program. An audit includes examining, on a test basis, evidence about Joseph Badger Local School District's compliance with those requirements and performing such other procedures as we considered necessary in the circumstances. We believe that our audit provides a reasonable basis for our opinion. Our audit does not provide a legal determination on the District's compliance with those requirements.

In our opinion, Joseph Badger Local School District complied, in all material respects, with the requirements referred to above that are applicable to each of its major federal programs for the year ended June 30, 2002.

Internal Control Over Compliance

The management of the District is responsible for establishing and maintaining effective internal control over compliance with requirements of laws, regulations, contracts and grants applicable to federal programs. In planning and performing our audit, we considered the District's internal control over compliance with requirements that could have a direct and material effect on a major federal program in order to determine our auditing procedures for the purpose of expressing our opinion on compliance and to test and report on internal control over compliance in accordance with OMB Circular A-133.

Our consideration of the internal control over compliance would not necessarily disclose all matters in the internal control that might be material weaknesses. A material weakness is a condition in which the design or operation of one or more of the internal control components does not reduce to a relatively low level the risk that noncompliance with applicable requirements of laws, regulations, contracts and grants that would be material in relation to a major federal program being audited may occur and not be detected within a timely period by employees in the normal course of performing their assigned functions. We noted no matters involving the internal control over compliance and its operation that we consider to be material weaknesses. However, we noted one matter involving the internal control over federal compliance that does not require inclusion in this report, that we have reported to management of the District in a separate letter dated December 20, 2002.

Schedule of Federal Awards Expenditures

We have audited the financial statements of the governmental activities, business-type activities, each major fund and the aggregate remaining fund information of the District as of and for the year ended June 30, 2002, which collectively comprise the Joseph Badger Local School District's basic financial statements, and have issued our report thereon dated December 20, 2002. Our audit was performed for the purpose of forming opinions on the financial statements that collectively comprise the District's basic financial statements. The accompanying schedule of federal awards expenditures is presented for purposes of additional analysis as required by OMB Circular A-133 and is not a required part of the basic financial statements. Such information has been subjected to the auditing procedures applied in the audit of the basic financial statements and, in our opinion, is fairly stated, in all material respects, in relation to the basic financial statements taken as a whole.

This report is intended for the information and use of the audit committee, management, the Board of Education, and federal awarding agencies and pass-through entities, and is not intended to be and should not be used by anyone other than these specified parties.



Jim Petro
Auditor of State

December 20, 2002

**JOSEPH BADGER LOCAL SCHOOL DISTRICT
TRUMBULL COUNTY
JUNE 30, 2002**

**SCHEDULE OF FINDINGS
OMB CIRCULAR A -133 §.505**

1. SUMMARY OF AUDITOR'S RESULTS

<i>(d)(1)(i)</i>	Type of Financial Statement Opinion	Unqualified
<i>(d)(1)(ii)</i>	Were there any material control weakness conditions reported at the financial statement level (GAGAS)?	No
<i>(d)(1)(ii)</i>	Were there any other reportable control weakness conditions reported at the financial statement level (GAGAS)?	No
<i>(d)(1)(iii)</i>	Was there any reported material non-compliance at the financial statement level (GAGAS)?	No
<i>(d)(1)(iv)</i>	Were there any material internal control weakness conditions reported for major federal programs?	No
<i>(d)(1)(iv)</i>	Were there any other reportable internal control weakness conditions reported for major federal programs?	No
<i>(d)(1)(v)</i>	Type of Major Programs' Compliance Opinion	Unqualified
<i>(d)(1)(vi)</i>	Are there any reportable findings under § .510?	No
<i>(d)(1)(vii)</i>	Major Programs (list):	Title I CFDA # 84.010
<i>(d)(1)(viii)</i>	Dollar Threshold: Type A\B Programs	Type A: > \$ 300,000 Type B: > All Others
<i>(d)(1)(ix)</i>	Low Risk Auditee?	Yes

**2. FINDINGS RELATED TO THE FINANCIAL STATEMENTS
REQUIRED TO BE REPORTED IN ACCORDANCE WITH GAGAS**

Finding Number	None
-----------------------	-------------

3. FINDINGS AND QUESTIONED COSTS FOR FEDERAL AWARDS

Finding Number	None
-----------------------	-------------

**Joseph Badger Local
School District
Kinsman, Ohio**

**Comprehensive Annual Financial Report
For the Fiscal Year Ended June 30, 2002**

Issued by:
Treasurer's Office
William A. Johnson

Joseph Badger Local School District
Comprehensive Annual Financial Report
For the Fiscal Year Ended June 30, 2002
Table of Contents

I.	Introductory Section	<u>Page</u>
	Title Page	i
	Table of Contents	ii
	Letter of Transmittal	v
	List of Principal Officials.....	xii
	Organizational Chart.....	xiii
	GFOA Certificate of Achievement	xiv
II.	Financial Section	
	Independent Accountant’s Report.....	1
	Management’s Discussion and Analysis.....	3
	Basic Financial Statements:	
	Government-wide Financial Statements:	
	Statement of Net Assets	13
	Statement of Activities.....	14
	Fund Financial Statements:	
	Balance Sheet-Governmental Funds	16
	Statement of Revenues, Expenditures and Changes in Fund Balances-Governmental Funds	18
	Statement of Revenues, Expenditures and Changes in Fund Balance- Budget (Non-GAAP Basis) and Actual:	
	General Fund.....	20
	Statement of Fund Net Assets-Enterprise Fund.....	22
	Statement of Revenues, Expenses and Changes in Fund Net Assets- Enterprise Fund	23
	Statement of Cash Flows – Enterprise Fund.....	24
	Statement of Fiduciary Net Assets- Fiduciary Funds	26
	Statement of Changes in Fiduciary Net Assets – Fiduciary Fund	27
	Notes to the Basic Financial Statements	28

Joseph Badger Local School District
Comprehensive Annual Financial Report
For the Fiscal Year Ended June 30, 2002
Table of Contents (continued)

Combining Statements and Individual Fund Schedules:

Combining Statements – Nonmajor Funds:

Fund Descriptions.....	54
Combining Balance Sheet – Nonmajor Governmental Funds.....	56
Combining Statement of Revenues, Expenditures and Changes in Fund Balances – Nonmajor Governmental Funds.....	57
Combining Balance Sheet – Nonmajor Special Revenue Funds.....	58
Combining Statement of Revenues, Expenditures and Changes in Fund Balances – Nonmajor Special Revenue Funds.....	61
Statement of Changes in Assets and Liabilities- Agency Fund	64

Individual Fund Schedules of Revenues, Expenditures/Expenses and Changes in
Fund Balance – Budget (Non-GAAP Basis) and Actual:

Major Funds:

General Fund	65
Permanent Improvement Fund	69
Food Service Fund.....	70

Nonmajor Funds:

Principal’s Fund	71
Professional Development Fund.....	72
Auxiliary Services Fund.....	73
Educational Management Information Systems Fund.....	74
District Managed Student Activity Fund.....	75
Disadvantaged Pupil Fund.....	76
School Net Professional Development Fund.....	77
Summer Intervention Fund.....	78
Safe Schools Fund.....	79
Title VIB Fund	80
Title I Fund.....	81
Title VI Fund.....	82
Title VIR Fund	83
Drug Free Fund	84
Eisenhower Fund.....	85
School Net Fund.....	86
Scholarship Trust Fund	87

Joseph Badger Local School District
Comprehensive Annual Financial Report
For the Fiscal Year Ended June 30, 2002
Table of Contents (continued)

III.	Statistical Section	
	Governmental Activities Revenues by Source and Expenses by Function--Last Three Fiscal Years.....	S1
	General Governmental Revenues by Source and Expenditures by Function--Last Ten Fiscal Years.....	S2
	Property Tax Levies and Collections--Last Eight Calendar Years	S4
	Assessed and Estimated Actual Value of Taxable Property--Last Ten Calendar Years	S5
	Property Tax Rates--Direct and Overlapping Governments--Last Ten Calendar Years.....	S6
	Ratio of Net General Obligation Bonded Debt to Assessed Value and Net Bonded Debt Per Capita--Last Ten Years	S7
	Computation of Legal Debt Margin.....	S8
	Computation of Direct and Overlapping General Obligation Bonded Debt.....	S9
	Ratio of Annual Debt Service Expenditures for General Obligation Bonded Debt to Total General Governmental Expenditures--Last Ten Fiscal Years.....	S10
	Demographic Statistics--Last Ten Years	S11
	Property Value and Financial Institution Deposits--Last Ten Years	S12
	Principal Taxpayers:	
	Real Estate Tax	S13
	Tangible Personal Property Tax	S14
	Public Utilities Tax	S15
	Per Pupil Cost--Last Ten Fiscal Years.....	S16
	Teacher Education and Experience.....	S17

Joseph Badger Local School District

8317 Main Street, Kinsman, Ohio 44428
Phone (330) 876-1051 Fax (330) 876-1053

Badger High School, 8319 Main Street
Kinsman, Ohio 44428 (330) 876-8011

Badger Middle School, 6144 State Route 7
Kinsman, Ohio 44428 (330) 772-4731



Gustavus Elementary, 4224 State Route 87
Farmdale, Ohio 44417 (330) 876-3610

Hartford Elementary, State Route 7 & 305
Hartford, Ohio 44424 (330) 772-2401

December 20, 2002

Board of Education Members
Joseph Badger Local School District

We are pleased to submit to you the third Comprehensive Annual Financial Report (CAFR) of the Joseph Badger Local School District. This report discloses information for the fiscal year ended June 30, 2002. This CAFR, which includes an opinion from the Auditor of the State of Ohio, conforms to generally accepted accounting principles as applicable to governmental entities. Responsibility for the accuracy of the data presented and the completeness and fairness of the presentation, including all disclosures, rests with the School District. To the best of our knowledge and belief the enclosed data are accurate in all material respects and are reported in a manner designed to present fairly the financial position and results of operations of the School District. This report will provide the taxpayers of the Joseph Badger Local School District with comprehensive financial data in a format that will enable them to gain an understanding of the School District's financial affairs. Copies will be made available to the Trumbull County Public Library, major taxpayers, financial rating services and other interested parties.

The comprehensive annual financial report is presented in three sections as follows:

1. The Introductory Section, which contains a Table of Contents, Letter of Transmittal, List of Principal Officials, an Organizational Chart of the School District and a GFOA Certificate of Achievement.
2. The Financial Section which begins with the Report of Independent Accountants, and includes Management's Discussion and Analysis, the Basic Financial Statements and Notes that provide an overview of the School District's financial position and operating results, the Combining Statements for non-major funds and other schedules that provide detailed information related to the Basic Financial Statements.
3. The Statistical Section which presents social and economic data, financial trends and the fiscal capacity of the Joseph Badger Local School District.

School District Organization

The Joseph Badger Local School District is located in the northeast quadrant of Trumbull County and is one of 613 school districts in the State of Ohio. The District's territory includes the townships of Gustavus, Hartford, Kinsman and Vernon.

The School District boundaries are a result of consolidation of the four K-12 township schools on January 2, 1960. Subsequent to the consolidation, enrollment increased and with it the need for new facilities became evident. An addition was made to the 1936 Kinsman Building to house the overflow of students. Since that time, enrollment has declined steadily. There are still four "very old" township schools in the district; one high school, one middle school and two elementary schools. Recently our facilities were evaluated by the State of Ohio. Our District has discovered that we possess the 5th and 9th worst buildings for safety in the entire State, which has prompted the Ohio School Facilities Commission to place Joseph Badger in the exceptional needs program for building replacement.

The 2002 fiscal year student count was 1,202. The teachers' average years of experience were 19.28 accompanied with a K-12 pupil/regular teacher ratio of 19.25. The School District employs one hundred thirty-four staff members, both certified and classified.

Statutorily, the School District operates under the standards prescribed by the Ohio State Board of Education as provided in division (D) of Section 3301/07 and Section 119.01 of the Ohio Revised Code, to provide education services prescribed by State and Federal agencies.

Reporting Entity

The Joseph Badger Local School District has reviewed its operating entity definition in order to insure conformance with the Governmental Accounting Standards Board Statement No. 14, "The Financial Reporting Entity." In evaluating how to define the School District for financial reporting purposes, management has considered all agencies, department and organizations making up the Joseph Badger Local School District (the primary government) and its potential component units.

The School District is a member of the Trumbull County Career and Technical Center, the Northeast Ohio Management Information Network, the Northeast Ohio Instructional Media Center, the Trumbull Student Assistance Consortium, the Northeast Ohio Special Education Regional Resource Center and the Region 12 Professional Development Center are jointly governed organizations. The School District participates in the Ohio School Boards Association Worker's Compensation Group Rating Program and the Trumbull County Schools Employee Insurance Benefits Consortium, which are public entity risk pools. The Kinsman Public Library is a related organization.

A complete discussion of the School District's reporting entity is provided in Note 1 to the basic financial statements.

Economic Condition and Outlook

Commercial growth within the School District has been very slow since consolidation; however, since January of 1997, Class II valuation has increased at an approximate rate of four percent per year. Total assessed value, based primarily on agricultural values and new single-family residential construction has increased approximately thirty-three percent in the past five years while student enrollment has remained almost level. The large increases were due mainly to revaluation of the properties within the District. The funding structure of public education in Ohio as mandated by the state legislature is such that school districts receive very little revenue growth as a result of inflationary increases in their tax base. Because of depressed economic conditions throughout the state there is little reason to believe that state funding of schools will change.

However, many people believe the future of State funding lies with the results of the DeRolph III lawsuit. As a result, districts throughout Ohio must seek local funds by placing levies on the ballot to receive significant revenue growth. The School District passed five-year renewals on each of its two emergency operating levies on the November 4, 1997 and November 3, 1998 ballots. It is projected that the School District will return to the ballot when these levies are due to expire.

Major Initiatives

SchoolNet

The statewide SchoolNet initiative helped Joseph Badger achieve its technology goals. SchoolNet funds provided the wiring infrastructure within each building. Each office, media center, and classroom in the Joseph Badger Local School District is wired and has the capability to reach the Internet and have access to worldwide information. T-1 lines have been installed to all district buildings to handle the increased volume of web traffic.

Technology Training

Teacher training is a very important component of successful utilization of technology and Internet usage. Seventy-nine percent of our seventy-four teachers have participated in at least a four-day technology in-service. Seventy-one percent of the staff has been Novice certified and there are currently six teachers who have obtained Practitioner level as certified by the Ohio Department of Education's SchoolNet office. Joseph Badger's technology mentors have been trained as trainers and can conduct individual instructional sessions. As we enter the 2002-2003 school year, there are fifty-one certificates awarded for information skills, fifty-one for productivity tools, seven for multimedia/hypermedia and seven for networking. Staff training leading to novice certification will be offered to our two new teachers this year and training leading to practitioner certification will be available to anyone interested. Providing the opportunity for extensive technology training has always been a high concern of the School District. This is evidenced by its inclusion in our previous technology plans as well as the School District's continuous improvement plan.

Accompanying the computer technology "explosion" within our schools was the need for a computer technology coordinator. This individual is responsible for maintaining all equipment and makes recommendations regarding the purchase, maintenance and staff in-service in regards to all aspects of computer technology for the district.

Info Ohio

All four Joseph Badger buildings are now active participants in the InfoOhio Media Network. In fact, Joseph Badger was one of the original seven districts to apply for and receive a grant to bring the District's libraries on line. Joseph Badger was the second of those districts to utilize InfoOhio through the NorthEast Ohio Information Management Network. The use of this network has helped our media centers become modern information resource centers. InfoOhio, a partner in Ohio's library network, ensures the free delivery, quality, format and equality of information for learners and educators by embracing appropriate, emerging technologies used in school, home and community. InfoOhio's recent initiatives have been to provide electronic resources for all Ohio K-12 schools. Students can now access information from specific databases, using computers connected to the Internet, from our school library media centers and classrooms. Most recently a computer technology grant was awarded to the Trumbull County Educational Service Center which will provide the Joseph Badger District state of the art access to books and instructional materials.

Curriculum and Instruction

Curriculum and instruction has undergone massive changes in the State of Ohio this past year. The Federal Elementary and Secondary Education Act (ESEA) have provided states a framework for which their schools must operate. These massive changes include the introduction of new content standards in areas of Math and Language Arts. Content standards in Science, Social Studies, and Computer Technology are soon to follow. While the curriculum underwent massive changes during the 2001-2002 school year, even more was accomplished concerning the delivery of services to the District's students. The school year saw the continued refinement of the role of the teaching assistants, a new position created to assist teachers in a variety of aspects. They continued to relieve the classroom teachers of some of their supervisory duties while working directly with at-risk children in the classroom as well as pulling them out of the classroom to meet in small groups. This remediation would hopefully provide a long term positive impact on proficiency scores.

Recently added library/media specialists continue to provide services both at Gustavus and Hartford Elementary schools. These individuals will also utilize these facilities to provide additional remediation to selected students. While it is possible for them to work with Title I and Special Education eligible students, their primary contract will be with other at-risk students. The positions originated through the Continuous Improvement Process and were a part of the State Required "Continuous Improvement Plan". Guidance Counselors and a Title VI-R funded classroom teacher continue to provide improved educational opportunity for K-5 elementary students.

District wide nursing services were expanded by adding a nurse in order to continue improvement of the health and safety of all students and staff members.

Special Education

The Joseph Badger Local Schools continue to be a leader in special education. Working in conjunction with the Trumbull County Educational Service Center, Joseph Badger students receive every opportunity generated for educational success. A variety of programs are offered and student-teacher ratios are well within state mandated guidelines.

Proficiency Testing

The Ohio Department of Education again distributed the Ohio Report Cards last spring to the home of every student. Of the twenty-seven standards Joseph Badger met eighteen during the 1999-2000 school year. Joseph Badger met or exceeded seventeen of the State standards during the 2000-2001 school year. Along with new content standards are testing requirements that are reflected on the State's ever changing Local Report Card. For the 2001-2002 school year the Local Report Card altered their reporting standard. Twelfth grade students were no longer required to take a proficiency test thus the reporting standards decreased from 27 to 22 standards. Joseph Badger met 13 of the 22 standards. Once again our passage rate shows continuous improvement. The missed standards continue to be concentrated in fourth and sixth grade. The eighth and tenth graders met all standards. It is obvious that the longer a student attends our District, the better their performance on the proficiency test. The District also met the attendance standard of ninety-three percent.

Summer School

The Joseph Badger School District continued to hold summer school classes during the summer of 2002. In accordance with the Ohio Revised Code, classes were held for students entering grades three, four, five and six. The classes consisted of forty-five hours over a three-week period and attendance is optional.

Financial Information

Internal Accounting and Budgetary Control In developing the School District's accounting system much consideration was given to the adequacy of internal accounting controls. Internal accounting controls are designed to provide reasonable, but not absolute assurance regarding the safeguarding of assets against loss from unauthorized use or disposition and the reliability of financial records for preparing financial statements and maintaining accountability for assets. The concept of reasonable assurance is based on the assumption that the cost of internal accounting controls should not exceed the benefits expected to be derived from their implementation.

The School District utilizes a fully automated accounting system as well as an automated system of control for fixed assets and payroll. These systems, coupled with the manual auditing of each voucher prior to payment, ensure that the financial information generated is both accurate and reliable.

At the beginning of each fiscal year, the Board of Education adopts either a temporary appropriation measure or a permanent appropriation measure for that fiscal year. If a temporary appropriation measure is first adopted, the permanent appropriation measure must be adopted upon receipt from the County Auditor of an amended certificate of estimated resources based on final assessed values and tax rates, which is usually within the first three months of the fiscal year.

Annual appropriations may not exceed the County Budget Commission's official estimate of resources. The County Auditor must certify that the Board of Education's appropriation measures, including any supplements or amendments, do not exceed the amount set forth in the latest of those official estimates.

All disbursements and transfers of cash between funds require appropriation authority from the Board. Budgets are controlled at the object account level within a function and fund. All purchase order requests must be approved by either the Superintendent or his designees and certified by the Treasurer; necessary funds are then encumbered and purchase orders released to vendors. Those requests that exceed the available appropriations are rejected until additional appropriations are secured.

The accounting system used by the School District provides interim financial reports which detail year-to-date expenditures and encumbrances versus the original appropriation plus any additional appropriations made to date.

If requested by the Superintendent, every school principal is furnished reports showing the status of the budget accounts for which they are responsible. In addition, an on line inquiry system is currently under development at each school building. As an additional safeguard, a blanket bond covers all employees who handle money, and a separate, higher limit bond covers the Treasurer of the Board of Education.

The basis of accounting and the various funds and account groups utilized by the Joseph Badger Local Schools are fully described in Note 2 of the financial statements. Additional information on the School District's budgetary accounting can also be found in Note 2.

Financial Condition This is the third year the School District has prepared financial statements following GASB Statement 34, "Basic Financial Statements-and Management's Discussion and Analysis-for State and Local Governments." GASB 34 creates new basic financial statements for reporting on the School District's financial activities as follows:

Government-wide financial statements These statements are prepared on an accrual basis of accounting which is similar to the basis of accounting followed by many businesses. The government-wide statements distinguish between those activities of the School District that are governmental and those that are considered business-type activities.

Fund financial statements These statements present information for individual major funds rather than by fund type. Nonmajor funds are presented in total in one column. Governmental funds use the modified accrual basis of accounting and include a reconciliation to the governmental activities accrual information presented in the government-wide financial statements. Proprietary and fiduciary funds use the accrual basis of accounting.

Statements of budgetary comparisons These statements present comparisons of actual information to the legally adopted budget. The budgetary basis as provided by law is based upon accounting for certain transactions on a basis of cash receipts, disbursements and encumbrances.

As part of this new reporting model, management is responsible for preparing a Management Discussion and Analysis of the School District. This discussion appears in the financial section of this report, providing an assessment of the School District finances for 2002 and facts that will influence future finances.

Financial Highlights - Fiduciary Fund. The trust fund carried on the financial records of the School District is a private purpose trust fund that has assets totaling \$15,388. Information regarding the major governmental and proprietary funds is presented in Management's Discussion and Analysis.

Cash Management

The Board has implemented an aggressive cash management program by expediting the receipt of revenues and prudently depositing and investing available cash balances. The cash management program is beneficial because of access to daily balances, which enables the Board to maintain minimum balance accounts and invest to the maximum extent. The total amount of interest earned was \$78,953 by the School District's Funds for the year ended June 30, 2002, \$78,565 being credited to the general fund.

Protection of the School District's deposits is provided by the federal deposit insurance corporation as well as by qualified securities pledged by the institution holding the assets. By law, financial institutions may establish a collateral pool to cover all public deposits. The market value of the pooled collateral must equal at least 105 percent of public funds deposited. Trustees including the Federal Reserve Bank and designated third party trustees of the financial institutions hold collateral.

During fiscal year 2002, investments were limited to STAR Ohio, an investment pool managed by the State Treasurer, and a Savings Account with Sky Bank.

Risk Management

The School District participates in a shared risk pool for hospital/medical benefits for its employees. The Trumbull County School Employee Insurance Benefits Consortium (the Consortium) "pool" is comprised of sixteen Trumbull County school districts. All risk is transferred to the Consortium and claims are paid through a common fund controlled by the Consortium. The Consortium purchases stop-loss coverage.

The School District provides no deductible liability coverage for all employees in the amounts of \$1,000,000 for each occurrence and \$5,000,000 in the aggregate. The District contracts annually for property and casualty insurance with a \$500 deductible and a 90 percent coinsurance. Fleet insurance is also contracted annually which provides liability coverage of \$500,000 each person and a \$1,000,000 each occurrence. Collision coverage is at actual cash value less \$250 deductible. Periodic RFPs ensure that the School District will receive favorable rates and appropriate coverage.

Independent Audit

Federal statutes require the School District to be subjected to an annual examination by an independent auditor. Independent auditor Jim Petro, Auditor of State, was selected to render an opinion on the School District's

financial statements as of and for the year ended June 30, 2002. An annual audit serves to maintain and strengthen the School District's accounting and budgetary controls.

Pursuant to statute, the State prescribed a uniform accounting system to standardize accounting classification and financial reporting for all governments in Ohio. The School District adopted and has been in conformance with that system beginning with its financial report for the 1979 year.

Awards

GFOA Certificate of Achievement The Government Finance Officers Association of the United States and Canada (GFOA) awarded a Certificate of Achievement for Excellence in Financial Reporting to Joseph Badger Local School District for its comprehensive annual financial report for the fiscal year ended June 30, 2001. The Certificate of Achievement is the highest form of recognition in the area of governmental financial reporting. In order to be awarded a Certificate of Achievement, a government unit must publish an easily readable and efficiently organized Comprehensive Annual Financial Report, whose contents conform to program standards. Such a report must satisfy both generally accepted accounting principles and applicable legal requirements.

A Certificate of Achievement is valid for a period of one year only. We believe our current report continues to conform to the Certificate of Achievement program requirements, and we are submitting it to GFOA.

Acknowledgments

The publication of this report is a significant step toward making the Joseph Badger Local School District's financial reporting more professional. The goal is to continuously improve our financial accountability to our citizens.

The preparation of this report would not have been possible without the assistance and support of the staff of the Treasurer's office, various administrators and staff members of the School District. Assistance from the County Auditor's staff and outside agencies made possible the fair presentation of statistical data.

Special appreciation is expressed to the Local Government Services Division of State Auditor Jim Petro's office for assistance in planning, designing and reviewing this financial report.

Finally, sincere appreciation is extended to the Board of Education for their support for this project.

Respectfully submitted,



William A. Johnson, Treasurer



Dr. David Bair, Superintendent

**Joseph Badger Local School District
Principal Officials
June 30, 2002**

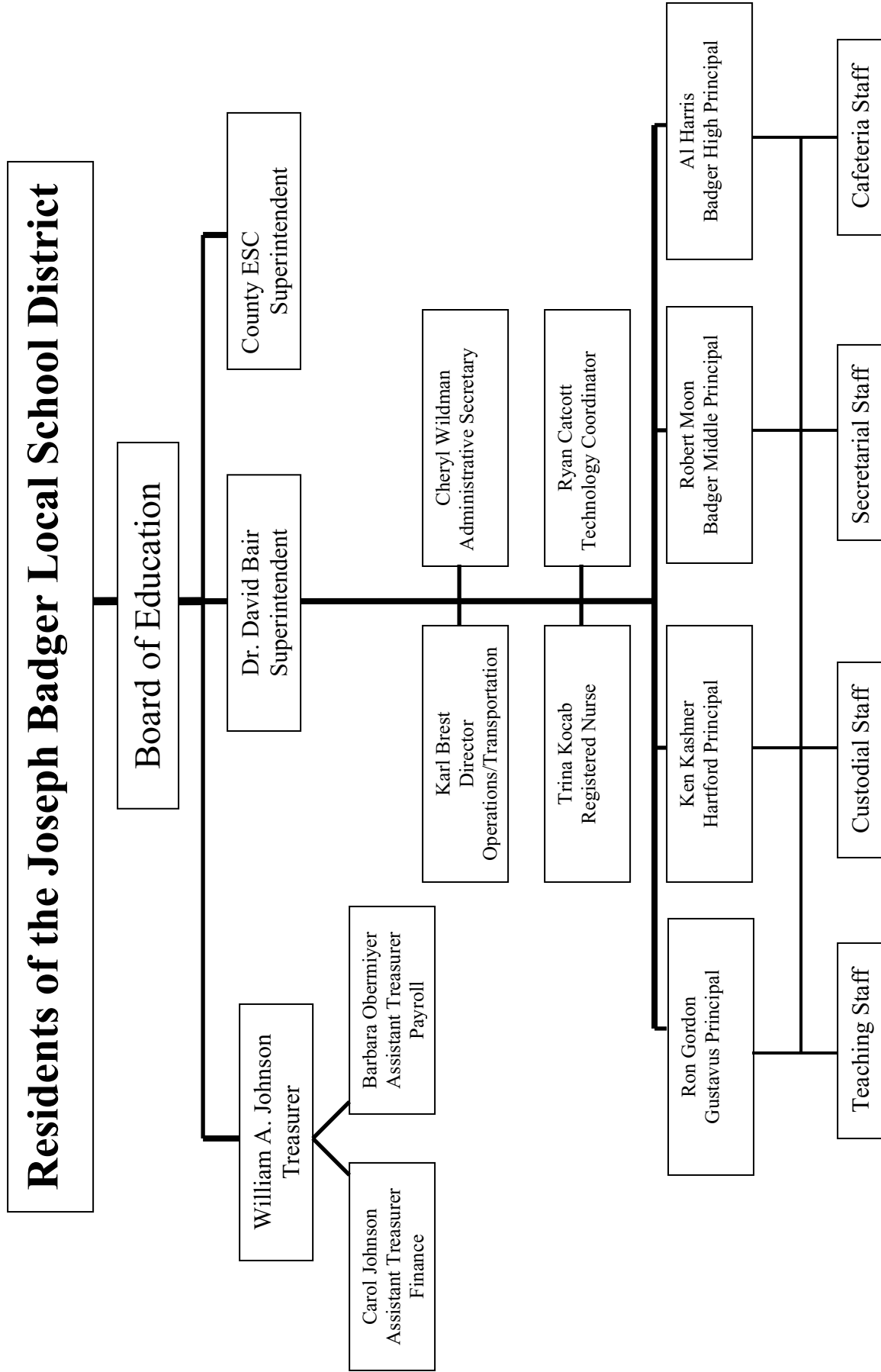
Board of Education

Mrs. Kimberly Bonar	President
Mr. Joe Logan	Vice-President
Mr. Jeff Mathews	Member
Mrs. Paula McGrath	Member
Mr. Joe Toth	Member

Administration

Mr. William Johnson	Treasurer
Dr. David Bair	Superintendent
Mr. Ronald Gordon	Principal, Gustavus Elementary
Mr. Alan Harris	Principal, Badger High School
Mr. Kenneth Kashner	Principal, Hartford Elementary
Mr. Robert Moon.....	Principal, Badger Middle School

Organizational Chart of the Joseph Badger Local School District



Certificate of Achievement for Excellence in Financial Reporting

Presented to

Joseph Badger Local
School District, Ohio

For its Comprehensive Annual
Financial Report
for the Fiscal Year Ended
June 30, 2001

A Certificate of Achievement for Excellence in Financial Reporting is presented by the Government Finance Officers Association of the United States and Canada to government units and public employee retirement systems whose comprehensive annual financial reports (CAFRs) achieve the highest standards in government accounting and financial reporting.



William Patrick Pate
President

Jeffrey L. Essler
Executive Director

This Page is Intentionally Left Blank.



STATE OF OHIO
OFFICE OF THE AUDITOR

JIM PETRO, AUDITOR OF STATE

Voinovich Government Center
242 Federal Plaza West
Suite 302
Youngstown, Ohio 44503
Telephone 330-797-9900
800-443-9271
Facsimile 330-797-9949
www.auditor.state.oh.us

INDEPENDENT ACCOUNTANTS' REPORT

Joseph Badger Local School District
Trumbull County
8317 Main Street
Kinsman, Ohio 44428

We have audited the accompanying financial statements of the governmental activities, the business-type activities, each major fund and the aggregate remaining fund information of the Joseph Badger Local School District, Trumbull County, (the District) as of and for the year ended June 30, 2002, which collectively comprise the District's basic financial statements as listed in the table of contents. These financial statements are the responsibility of the District's management. Our responsibility is to express an opinion on these financial statements based on our audit.

We conducted our audit in accordance with auditing standards generally accepted in the United States of America and the standards applicable to financial audits contained in *Government Auditing Standards*, issued by the Comptroller General of the United States. Those standards require that we plan and perform the audit to obtain reasonable assurance about whether the financial statements are free of material misstatement. An audit includes examining, on a test basis, evidence supporting the amounts and disclosures in the financial statements. An audit also includes assessing the accounting principles used and significant estimates made by management, as well as evaluating the overall financial statement presentation. We believe that our audit provides a reasonable basis for our opinions.

In our opinion, the financial statements referred to above present fairly, in all material respects, the respective financial position of the governmental activities, the business-type activities, each major fund and the aggregate remaining fund information of the Joseph Badger Local School District, Trumbull County, as of June 30, 2002, and the respective changes in financial position and cash flows, where applicable, thereof and the respective budgetary comparison for the General fund for the year then ended in conformity with accounting principles generally accepted in the United States of America.

In accordance with *Government Auditing Standards*, we have also issued our report dated December 20, 2002 on our consideration of the District's internal control over financial reporting and our tests of its compliance with certain provisions of laws, regulations, contracts and grants. That report is an integral part of an audit performed in accordance with *Government Auditing Standards* and should be read in conjunction with this report in considering the results of our audit.

Management's Discussion and Analysis is not a required part of the basic financial statements, but is supplementary information the Governmental Accounting Standards Board requires. We applied limited procedures, consisting principally of inquiries of management regarding the methods of measurement and presentation of the supplementary information. We did not audit the information and express no opinion on it.

We conducted our audit to form opinions on the financial statements that collectively comprise the District's basic financial statements. The introductory section, combining and individual nonmajor fund statements and statistical tables are not a required part of the basic financial statements. We subjected the combining and individual nonmajor fund statements to the auditing procedures applied in the audit of the basic financial statements. In our opinion, this information is fairly stated in all material respects, in relation to the basic financial statements taken as a whole. We did not subject the introductory section and statistical tables to the auditing procedures applied in the audit of the basic financial statements, and accordingly, we express no opinion on them.

A handwritten signature in black ink, appearing to read "Jim Petro". The signature is stylized with a large loop at the end.

Jim Petro
Auditor of State

December 20, 2002

Joseph Badger Local School District
Management's Discussion and Analysis
For the Fiscal Year Ended June 30, 2002
Unaudited

It is again an honor to present the financial discussion and analysis of Joseph Badger Local School District. Here in these next few paragraphs, tables and graphic illustrations is management's view of how our School District is currently performing and how facts may change that performance in the future. This is intended to be a clear presentation to our taxpayers and all others who may be interested in our School District. Please use our comments along with the accompanying transmittal letter; financial statements and notes to better understand our School District's finances

FINANCIAL HIGHLIGHTS

- ❑ The School District's total net assets increased from \$3,681,378 to \$3,732,801 for a gain of \$51,423 during this year's operations. The net assets of Governmental activities increased 1.9 percent. Business-type activities showed a decrease in net assets of (\$18,229) or (78.5) percent.
- ❑ Total governmental activities revenues of \$8,003,229 were comprised of General revenues in the amount of \$7,645,238 and program revenues totaling \$357,991. Program revenues are grants, fees and donations; general (non-program) revenue is Foundation from the State of Ohio and Local Taxes charged to residents of the school district. In table 3 below, you will find the detailed cost of each program to our District.
- ❑ The School District's business type activities showed program revenue of \$317,599 compared to \$309,567 last fiscal year. This equates to a 2.59 percent increase in revenue. Business type expenses were \$363,011 in comparison to last year's \$319,127 for an increase of 13.75 percent. The spike in expenses was largely related to a substantial increase in health care costs.
- ❑ At the end of this fiscal year Joseph Badger was notified that they had qualified under the "exceptional needs program" of the Ohio School Facilities Project. This meant that because of the poor condition and overall safety of our buildings that the State of Ohio would be willing to provide most of the capital required to construct a new pre-kindergarten thru grade twelve building. In order to accept the money, the Board was required to purchase land and to pass a levy for matching funds. One hundred acres of land was successfully purchased at a price of just under four hundred thousand dollars.

USING THIS ANNUAL REPORT

This annual report consists of a series of financial statements. The Statement of Net Assets and the Statement of Activities (on pages 13 and 14-15) provide information about the activities of the District as a whole and present a longer-term view of the District's finances. Fund financial statements start on page 16. For governmental activities, these statements tell how these services were financed in the short term as well as what remains for future spending. Fund financial statements also report the District's operations in more detail than the government-wide statements by providing information about the District's most significant funds. The remaining statements provide financial information about activities for which the District acts solely as a trustee or agent for the benefit of those outside the government.

Joseph Badger Local School District
Management's Discussion and Analysis
For the Fiscal Year Ended June 30, 2002
Unaudited

Reporting the School District as a Whole (district-wide)

The only two reports that display district-wide finances are the Statement of Net Assets and the Statement of Activities. Within these statements, we show the School District divided into two kinds of activities:

- ❑ Governmental Activities – All of the School District's instructional activities are reported here. Property Taxes, State and Federal Grants and fees finance the majority of activity in this group.
- ❑ Business-Type Activities – If the Board of Education sets a fee designed to offset the cost of operating a program, then this defines a business-type activity. The School District's school lunch program is reported here.

Analysis of the School District as a whole begins on page 5. One of the most important issues when analyzing any business entity is "Are you better off today than you were one year ago?" The two district-wide documents try to state and support the answer to this quandary. These statements include all assets and liabilities using the accrual basis of accounting, which is similar to the accounting used by most private-sector companies. The most important aspect of accrual accounting is that all of the year's revenues and expenses are reported regardless of when cash is received or paid out.

These statements also display the net assets of the School District and note any changes that occurred during the year. Net assets are the difference between assets and liabilities and they tend to be the lead indicator of financial health. Please investigate other factors such as changes in property tax values, tax levies and renewals or state funding issues before reaching a final conclusion about our School District's financial status. Please also look at the individual fund conditions to show the composition of the changes.

Reporting the School District's Most Significant Funds (fund financials)

Analysis of the School District's major funds begins on page 8. The fund financial statements begin on page 16 and provide detailed information about each significant fund in contrast to the previously described district-wide reporting. Most of the funds are required to be established by State law. Using strict definitions, the District did not have any major Governmental funds other than the General Fund. In prior years, the District treasurer reported Debt service and Permanent Improvement as major funds but the district is debt free and doesn't show a debt service fund this year. Permanent Improvement and General Funds will be the only major Governmental Funds displayed.

Governmental funds – Most of the School District's funds are reported as governmental funds. These reports focus on how resources flow into and out of these funds and the balances left at year-end that are available for spending. These reports are done on a modified accrual basis, which measures cash and all other financial assets that can be readily converted into cash. The governmental fund statements provide a detailed short-term view of the School District's general government operations and the basic services it provides. There are differences between governmental funds (as reported in this section) and Governmental Activities as reported in the Statement of Net Assets and the Statement of Activities. These differences are reconciled in the financial statements.

Proprietary funds – The Board of Education charges students a fee for school lunch. The money collected locally combined with State and Federal reimbursements, is intended to defray all expenses necessary to operate the food service program. Each month the Board reviews cash projections to see if the lunch fund will negatively impact the general fund. This is the School District's only proprietary fund. Proprietary funds utilize the same form of accounting as business-type activities; therefore these statements match those found in the district-wide statements.

Joseph Badger Local School District
Management's Discussion and Analysis
For the Fiscal Year Ended June 30, 2002
Unaudited

The School District as a Trustee

The School District is a trustee or fiduciary for a single fund. This fund holds and invests the principal amount and provides the earnings in the form of a scholarship for a graduating senior. There is no School District related activity occurring within this fund.

THE SCHOOL DISTRICT AS A WHOLE

The Statement of Net Assets looks at the District as a whole. The School District's total net assets were slightly up from a year ago. Table 1, shows an increase to \$3,732,801 from \$3,681,378. The increase in Net Assets indicates that the School District was able to improve financial health in a difficult economic environment.

(Table 1)
Net Assets

	Governmental Activities		Business-Type Activities		Total	
	2002	2001	2002	2001	2002	2001
Assets						
Current and Other Assets	\$5,158,258	\$5,331,338	\$7,070	\$22,601	\$5,165,328	\$5,353,939
Capital Assets	2,664,661	2,304,145	37,592	37,588	2,702,253	2,341,733
Total Assets	7,822,919	7,635,483	44,662	60,189	7,867,581	7,695,672
Liabilities						
Long-Term Liabilities	(554,729)	(551,730)	(4,112)	(3,842)	(558,841)	(555,572)
Other Liabilities	(3,540,392)	(3,425,606)	(35,547)	(33,115)	(3,575,939)	(3,458,721)
Total Liabilities	(4,095,121)	(3,977,336)	(39,659)	(36,957)	(4,134,780)	(4,014,293)
Net Assets						
Invested In Capital						
Assets	2,664,661	2,304,145	37,592	37,588	2,702,253	2,341,733
Restricted	180,140	117,258	0	0	180,140	117,258
Unrestricted (Deficit)	882,997	1,236,743	(32,589)	(14,356)	850,408	1,222,387
Total Net Assets	\$3,727,798	\$3,658,146	\$5,003	\$23,232	\$3,732,801	\$3,681,378

Current and Other Assets decreased due to a Board decision to invest in land capital assets causing a position shift in assets from Current Assets to Capital Assets.

Capital Assets were added in the gross amount of \$629,622. Most of the increase is from the \$399,999 land purchase of 100 acres. The Board of Education felt that it was important to secure land to accommodate a new school complex. This decision was made in response to a notification received from the State of Ohio that Joseph Badger Local Schools' district buildings were in need of urgent repair or replacement and that the State was willing to infuse twenty-one million dollars into new buildings for our School District.

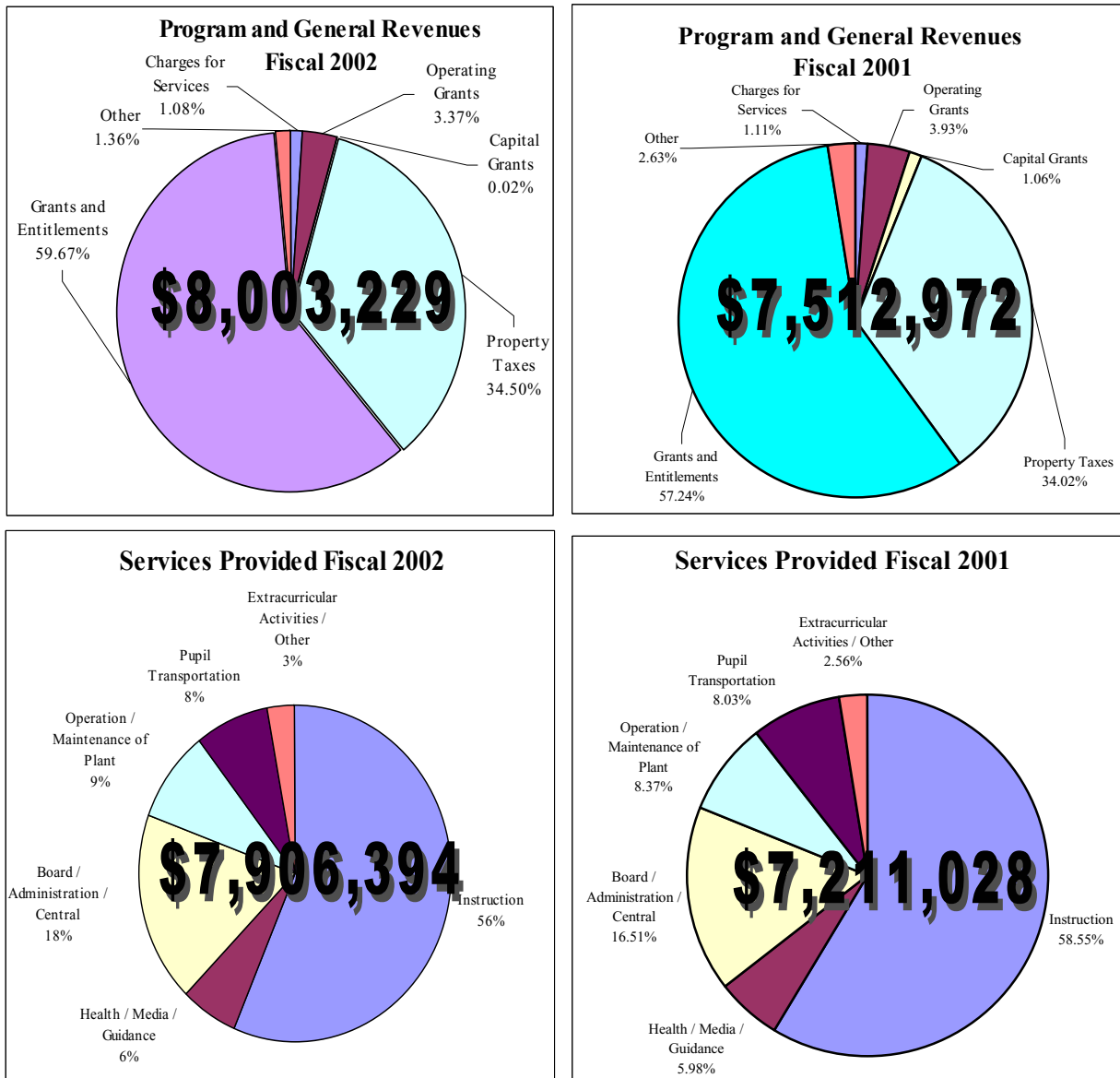
To arrive at the net increase in Capital Assets, you must subtract this year's depreciation expense of \$238,645. In the accompanying notes you will find the detail on how this expense was distributed.

Joseph Badger Local School District
Management's Discussion and Analysis
For the Fiscal Year Ended June 30, 2002
Unaudited

The net assets of our business-type activity or school lunch program decreased from \$23,232 to \$5,003. This represents a steep decline in fiscal health. Management has decided to attempt to enhance the revenue streams by adding a breakfast program to one of our elementary buildings and possibly the middle school if proven successful. Increasing revenue with no additional labor costs could slow our projected losses. Management has identified the rising cost of employee health care benefits and the duplicative costs of operating four cafeterias as key cost problems.

This is the third year the School District has prepared financial statements following GASB Statement 34, so revenue and expense comparisons to the previous fiscal year are presented.

(Chart 1)
Governmental Activities Revenue and Program Expenses
Fiscal 2002 and Fiscal 2001



Joseph Badger Local School District
Management's Discussion and Analysis
For the Fiscal Year Ended June 30, 2002
Unaudited

Table 2 highlights the District's revenues and expenses. These two main components are subtracted to yield the change in net assets. This table utilizes the full accrual method of accounting.

(Table 2)
Program Revenues and Expenses

	Governmental Activities 2002	Governmental Activities 2001	Business- Type Activities 2002	Business- Type Activities 2001	Total 2002	Total 2001
Revenues and Transfers In						
Program Revenues:						
Charges for Services	\$86,606	\$83,505	\$189,313	\$192,145	\$275,919	\$275,650
Operating Grants	269,385	295,623	128,286	117,422	397,671	413,045
Capital Grants	2,000	79,807	0	0	2,000	79,807
Subtotal	<u>\$357,991</u>	<u>\$458,935</u>	<u>\$317,599</u>	<u>\$309,567</u>	<u>\$675,590</u>	<u>\$768,502</u>
General Revenue:						
Property Taxes	2,760,963	2,556,186	0	0	2,760,963	2,556,186
Grants and Entitlements	4,775,137	4,300,266	0	0	4,775,137	4,300,266
Other	109,138	197,585	0	284	109,138	197,869
Subtotal	<u>\$7,645,238</u>	<u>\$7,054,037</u>	<u>\$</u>	<u>\$ 284</u>	<u>\$7,645,238</u>	<u>\$7,054,321</u>
Transfers In	<u>0</u>	<u>0</u>	<u>27,183</u>	<u>0</u>	<u>27,183</u>	<u>0</u>
Total Revenues and Transfers In	<u>\$8,003,229</u>	<u>\$7,512,972</u>	<u>\$344,782</u>	<u>\$309,851</u>	<u>\$8,348,011</u>	<u>\$7,822,823</u>
Program Expenses and Transfers Out						
Instruction:						
Regular	\$3,792,508	\$3,578,852	\$0	\$0	\$3,792,508	\$3,578,852
Special	602,471	587,040	0	0	602,471	587,040
Vocational	58,150	50,628	0	0	58,150	50,628
Support Services:						
Pupils	269,551	264,410	0	0	269,551	264,410
Instructional Staff	207,527	168,253	0	0	207,527	168,253
Board of Education	180,336	136,730	0	0	180,336	136,730
Administration	981,924	764,260	0	0	981,924	764,260
Fiscal	189,586	235,506	0	0	189,586	235,506
Business	2,263	0	0	0	2,263	0
Operation and Maintenance of Plant	698,596	606,097	0	0	698,596	606,097
Pupil Transportation	629,915	581,336	0	0	629,915	581,336
Central	81,144	58,765	0	0	81,144	58,765
Operation of Non-Instructional						
Services	0	384	0	0	0	384
Extracurricular Activities	212,423	178,163	0	0	212,423	178,163
Debt Service:						
Principal Retirement						
Interest and Fiscal Charges	0	604	0	0	0	604
Food Service	0	0	363,011	319,127	363,011	319,127
Transfers Out	<u>27,183</u>	<u>0</u>	<u>0</u>	<u>0</u>	<u>27,183</u>	<u>0</u>
Total Expenses and Transfers Out	<u>\$7,933,577</u>	<u>\$7,211,028</u>	<u>\$363,011</u>	<u>\$319,127</u>	<u>\$8,296,588</u>	<u>\$7,530,155</u>
Increase (Decrease) in Net Assets	<u>\$69,652</u>	<u>\$301,944</u>	<u>(\$18,229)</u>	<u>(\$9,276)</u>	<u>\$51,423</u>	<u>\$292,668</u>

Joseph Badger Local School District
Management's Discussion and Analysis
For the Fiscal Year Ended June 30, 2002
Unaudited

Analysis of overall financial position and results of operations

The financial position of the Joseph Badger Local School District has improved over the past fiscal year. Net Assets continue to increase showing improving fiscal health. The results of operations were excellent and within parameters established at the beginning of the fiscal year.

Management was able to maintain improvements in services for children. New health and guidance services were kept and an additional part-time RN was added to improve services over our sprawling School District. Money counters were added at the elementary schools freeing the teaching staff to provide 10 to 15 more minutes of instruction during the school day. This simple change should result in improved services for our children.

The District enjoyed a successful financial year and operations improved. Additionally, cash assets were utilized to secure land capital assets which will provide a safe central place to construct a new and efficient educational complex.

In table 3 below the total cost of services column contains all costs related to the programs and the net cost column shows how much of the total amount is not covered by program revenues. The net costs are program costs that must be covered by unrestricted state aid (State Foundation) or local taxes. The difference in these two columns would represent restricted grants, fees and donations.

(Table 3)
Governmental Activities

<u>Programs</u>	Total Cost of Services 2002	Total Cost of Services 2001	Net Cost of Services 2002	Net Cost of Services 2001
Instruction	\$4,453,129	\$4,219,822	\$4,197,094	\$3,860,864
Support Services:				
Pupils and Instructional Staff	477,078	432,663	470,150	428,163
Board of Education, Administration, Fiscal and Business Services	1,354,109	1,136,496	1,346,333	1,114,779
Operation and Maintenance of Plant	698,596	606,097	686,062	603,328
Pupil Transportation	629,915	581,336	627,159	578,914
Central	81,144	58,765	75,824	58,454
Operation of Non-Instructional Services	0	384	0	384
Extracurricular Activities	212,423	178,163	145,781	109,905
Interest and Fiscal Charges	0	604	0	604
Total Expenses	\$7,906,394	\$7,214,330	\$7,548,403	\$6,755,395

THE DISTRICT'S FUNDS

As previously stated, these funds are accounted for using the modified accrual basis of accounting. All Governmental funds had total revenues of \$8,000,828 and expenditures of \$7,861,408. A slight increase to cash was realized.

Joseph Badger Local School District
Management's Discussion and Analysis
For the Fiscal Year Ended June 30, 2002
Unaudited

General Fund Financial Activity

The most significant Governmental Fund is the General Fund. The fund balance of the General Fund decreased by \$291,883. Though both State Foundation Revenue and Tax Revenue increased, expenditures associated with the land purchase and healthcare premiums caused a negative cash flow.

General Fund Budgetary Highlights

In this fund, the forecasted receipts and expenditures presented to the Joseph Badger Board of Education in September finished the reporting period within expectations. The unexpected land purchase can be singled out as being the main budgetary irregularity. Though it was known that the Board needed to purchase land it was not anticipated for this fiscal year. The general fund receipts were estimated within one percent of actual revenue and actual expenditures exceeded the estimate by two percentage points if you exclude the land purchase. This meant that it was not necessary to revise the associated five-year forecast required by the State of Ohio. It is this District's year-end policy to request an amended certificate of estimated resources that equals actual revenues and to pass an appropriation resolution whose amounts equal actual expenditures and encumbrances in the majority of accounts at year-end.

CAPITAL ASSETS

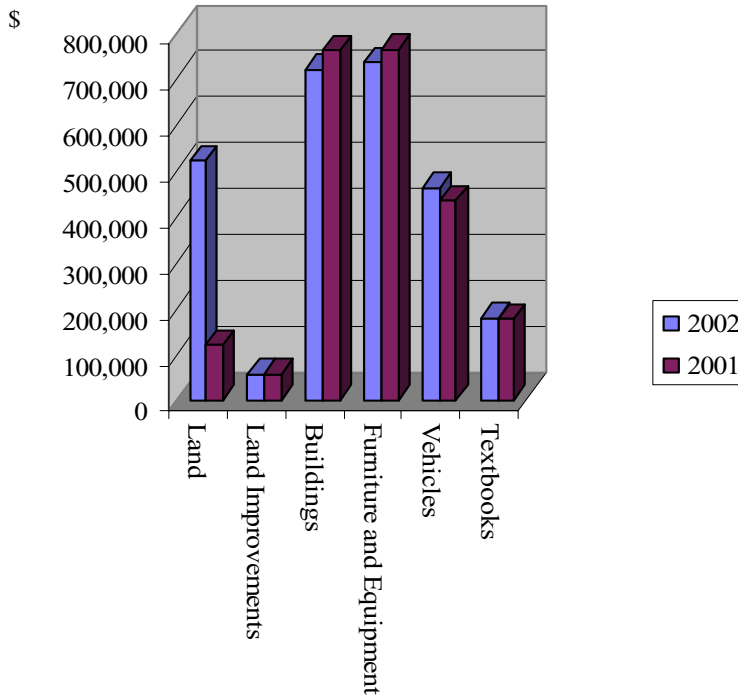
The following table shows ending balances of capital assets invested in various categories. Table 4 reflects a total increase of \$360,520. The School District's capital assets were improved in the following ways: Additions and replacements to computer resources; New classroom furniture; Two busses and a bus security system; cafeteria equipment was purchased. We proudly also again improved our textbook resources. The School District's Land Assets were enhanced this reporting period in response to the School District receiving notification that State dollars were committed for Joseph Badger Local's construction project. The land acquisition was seen as crucial to the School District's future plans.

Capital Assets
(Table 4)
Capital Assets at June 30
(Net of Depreciation)

	Governmental Activities		Business-Type Activities		Total	
	2002	2001	2002	2001	2002	2001
Land	\$519,499	\$119,500	\$0	\$0	\$519,499	\$119,500
Land Improvements	55,947	56,370	0	0	55,947	56,370
Buildings and Improvements	718,403	758,617	0	0	718,403	758,617
Furniture and Equipment	732,738	761,137	37,592	37,588	770,330	798,725
Vehicles	460,903	432,376	0	0	460,903	432,376
Textbooks	177,171	176,145	0	0	177,171	176,145
Totals	\$2,664,661	\$2,304,145	\$37,592	\$37,588	\$2,702,253	\$2,341,733

Joseph Badger Local School District
Management's Discussion and Analysis
For the Fiscal Year Ended June 30, 2002
Unaudited

(Chart 2)
Change in Net Assets



The graph at the left shows the category and net worth of our School District's assets. While a decline in buildings and furniture assets is shown and is natural as a District transitions to a new site, it is not the intent of management to allow buildings and furniture to fall into disrepair. Management will provide quality buildings and equipment for current students but likely will not spend more than depreciation in those areas unless an emergency would dictate otherwise.

School District vehicles depreciated with a rate equal to the \$100,000 spent this year on this category. In discussions with the director of transportation, the fleet is still in need of vehicles. Management will attempt to correct this; however, because this is under

funded by the State, educational dollars will be needed to provide safe transportation. School District records indicate that Joseph Badger has been required to spend \$193,000 educational dollars over the State's bus purchase allowance just since the set-aside provisions were established in Ohio. See Note 8 for additional capital asset information.

DEBT

At June 30th 2002, Joseph Badger Local School District was debt free and furthermore, the Board of Education neither ordered new debt nor made any debt payments during the reporting period. Also, as of June 30, 2002, the School District's legal debt margin was \$8,380,501 with an unvoted debt margin of \$93,117. Neither Moody's nor Standard & Poor's currently rate the Joseph Badger Local School District. See Note 13 for additional debt information.

About the Future

Joseph Badger Local School District is presently financially strong and trending toward additional fiscal health. Management is optimistic about the future for this School District, however the following facts could change this outlook for the better or worse.

The School District's four buildings continue to be a source of current and future concern. This year, the Joseph Badger Local Board of Education purchased real estate central in our School District with specifications matching those required by the Ohio School Facilities Commission. In a subsequent event, a twenty eight year bond issue asking for \$7,873,274 Local Share required by the State and also \$2,277,000 in locally funded initiative was place on the November 2002 ballot. This issue was to provide for a

Joseph Badger Local School District
Management's Discussion and Analysis
For the Fiscal Year Ended June 30, 2002
Unaudited

comprehensive pre-kindergarten through twelfth grade new construction project that will include educational spaces that are not provided by the State. The Board decided that intellectual and athletic items such as sports fields and an auditorium were indispensable items to a child's complete education. In the first attempt, this issue was defeated by a narrow 111 vote margin. The Board has decided to try again in February of 2003.

The most recently filed five-year forecast shows that this School District will not require the passage of any new additional operating mills in the near term. In a subsequent event, one of our emergency levies passed on the November 2002 ballot. Renewal of the second emergency levy in November 2003 will be required to ensure a solid future. Failure of this levy could have serious consequences on School District finances. The November 2003 levy brings \$525,000 annually to the School District and these two levies combined bring one million dollars per year to this School District. Emergency levies are precarious because they require voter approval at the end of their five year life and also because the dollar amount is fixed and does not compensate for inflation. The Board has discussed several alternative tax strategies. Management will attempt to replace emergency millage with continuing millage at some point in the future.

We are dependent on outside factors for our future success. The Ohio School Funding Formula provides most of the revenue for Joseph Badger Local Schools. The legislators in Ohio have been working diligently on the Formula to provide equitable and adequate education for children throughout our State. Their efforts added some revenue to the Joseph Badger Local Schools; however, much of the new revenue has restrictions that could cause the School District to start new program and to increase spending on special education and decrease spending on regular education. While a significant increase in the State's financial efforts would be welcome, our forecasts do not take this possibility into account. We only anticipate a small increase in State revenue each year.

Insurance premiums for property and fleet have increased dramatically and health care insurance continues to be a source of concern. The health care insurance consortium to which Joseph Badger belongs has decided to hold premiums steady after a forty percent increase in the previous renewal. Health care cost containment has become a large issue for the future. Management negotiated a contract that will require new teaching employees to switch to managed care and away from traditional programs.

Joseph Badger Local has thirteen teachers approaching retirement. Often if a senior teacher retires, they are replaced at a much lower cost. This could have a positive affect on School District finances.

Important Business Ratios

This year we have tried to display some important business ratios for our School District. These ratios reveal some of the key financial components of our business. In this chart we take a look at issues such as Financial Position, Liquidity, Solvency and Fiscal Capacity. Many readers will be familiar with these facts as they are often presented in the private sector. Financial Position shows assets or fund balances and how they relate to total revenue or total expenses. Liquidity looks at Assets or Cash compared to Liabilities. Solvency is the reverse picture that attempts to disclose how liabilities stack up to resources. Solvency also discloses how significant debt service requirements are relative to overall expenditures. Fiscal capacity ratios try to indicate how difficult it is to meet your obligations and if it is feasible to attach more liability or debt to the population.

Joseph Badger Local School District
Management's Discussion and Analysis
For the Fiscal Year Ended June 30, 2002
Unaudited

(Table 6)
Business Ratios

Dividend Divisors	Actual	Ratio	Dividend Divisors	Actual	Ratio
Financial Position					
Net Assets to:	\$3,727,798		Fund Balance to:	\$1,536,737	
Total General Revenues	7,645,238	0.4876	Total Revenue	7,645,238	0.2010
Total Expenses	7,906,394	0.4715	Total Expenses	7,906,394	0.1944
Change in Net Assets to:	\$69,652		Unreserved Fund Balance to:	\$1,337,821	
Total Revenue	7,645,238	0.0091	Total Revenue	7,645,238	0.1750
Total Expenses	7,906,394	0.0088	Total Expenses	7,906,394	0.1692
Liquidity					
Current Assets to:	\$5,158,258		Cash and Investments to:	\$2,048,417	
Current Liabilities	3,540,392	1.4570	Current Liabilities	3,540,392	0.5786
Solvency					
Total Liabilities to:	\$4,095,121		Total Liabilities to:	\$4,095,121	
Total Assets	7,822,919	0.5235	Net Assets	3,727,798	1.0985
Total Liabilities to:	\$4,095,121		Debt Service to:	\$0	
Total General Revenues	7,645,238	0.5356	Total Expenditures	7,906,394	0.0000
Fiscal Capacity					
Total Liabilities x 100	\$409,512,100		Total Liabilities to:	\$4,095,121	
Total Assessed Property Value	93,116,676	4.3978	Population	7,066	579.5529
Property Tax Revenues x 100 to:	\$276,096,300		Property Tax Revenues to:	\$2,760,963	
Total Assessed Property Value	93,116,676	2.9651	Population	7,066	390.7392

Contacting the School District's Financial Management

These financial reports and discussions are designed to provide our students, citizens, taxpayers, investors and creditors with a complete disclosure of the School District's finances and to demonstrate a high degree of accountability for the public dollars entrusted to us. If you have questions about this report or need additional financial information, please write William A. Johnson, Treasurer at Joseph Badger Local School District, 8317 Main Street, Kinsman, Ohio 44428 or call (330) 876-1051 or E-mail William.Johnson@Neomin.Org.

Joseph Badger Local School District

Statement of Net Assets

June 30, 2002

	<u>Governmental Activities</u>	<u>Business Type Activities</u>	<u>Total</u>
<i>Assets:</i>			
Equity in Pooled Cash and Cash Equivalents	\$2,048,417	\$201	\$2,048,618
Accrued Interest Receivable	5,409	0	5,409
Inventory Held for Resale	0	5,716	5,716
Materials and Supplies Inventory	23,291	1,153	24,444
Restricted Assets	280,131	0	280,131
Taxes Receivable	2,801,010	0	2,801,010
Land	519,499	0	519,499
Depreciable Capital Assets, Net of Depreciation	<u>2,145,162</u>	<u>37,592</u>	<u>2,182,754</u>
<i>Total Assets</i>	<u>7,822,919</u>	<u>44,662</u>	<u>7,867,581</u>
<i>Liabilities:</i>			
Accounts Payable	22,368	0	22,368
Accrued Wages	610,662	20,659	631,321
Intergovernmental Payable	180,645	14,888	195,533
Deferred Revenue	2,726,717	0	2,726,717
Long Term Liabilities			
Due Within One Year	1,529	0	1,529
Due In More Than One Year	<u>553,200</u>	<u>4,112</u>	<u>557,312</u>
<i>Total Liabilities</i>	<u>4,095,121</u>	<u>39,659</u>	<u>4,134,780</u>
<i>Net Assets:</i>			
Investment in Capital Assets:	2,664,661	37,592	2,702,253
Restricted for:			
Set Asides	33,356	0	33,356
Capital Projects	89,071	0	89,071
Other Purposes	57,713	0	57,713
Unrestricted (Deficit)	<u>882,997</u>	<u>(32,589)</u>	<u>850,408</u>
<i>Total Net Assets</i>	<u>\$3,727,798</u>	<u>\$5,003</u>	<u>\$3,732,801</u>

See accompanying notes to the basic financial statement

Joseph Badger Local School District
Statement of Activities
For the Fiscal Year Ended June 30, 2002

	Program Revenues			
	Expenses	Charges for Services and Sales	Operating Grants and Contributions	Capital Grants and Contributions
Governmental Activities				
Instruction:				
Regular	\$3,792,508	\$14,790	\$50,057	\$1,007
Special	602,471	1,487	188,350	100
Vocational	58,150	229	0	15
Support Services:				
Pupils	269,551	1,062	1,156	72
Instructional Staff	207,527	807	3,777	54
Board of Education	180,336	697	0	47
Administration	981,924	3,874	2,076	261
Fiscal	189,586	760	0	51
Business	2,263	9	0	1
Operation and Maintenance of Plant	698,596	2,470	9,904	160
Pupil Transportation	629,915	2,582	0	174
Central	81,144	300	5,000	20
Operation of Non-Instructional Services	0	0	0	0
Extracurricular Activities	212,423	57,539	9,065	38
Total Governmental Activities	7,906,394	86,606	269,385	2,000
Business-Type Activity				
Food Service	363,011	189,313	128,286	0
Totals	\$8,269,405	\$275,919	\$397,671	\$2,000

General Revenues

Property Taxes Levied for:

 General Purposes

 Capital Outlay

Grants and Entitlements not Restricted to Specific Programs

Investment Earnings

Miscellaneous

Total General Revenues

Transfers

Total General Revenues and Transfers

Changes in Net Assets

Net Assets Beginning of Year

Net Assets End of Year

See accompanying notes to the basic financial statements

Net (Expense) Revenue
and Changes in Net Assets

Governmental Activities	Business Type Activity	Total
(\$3,726,654)	\$0	(\$3,726,654)
(412,534)	0	(412,534)
(57,906)	0	(57,906)
(267,261)	0	(267,261)
(202,889)	0	(202,889)
(179,592)	0	(179,592)
(975,713)	0	(975,713)
(188,775)	0	(188,775)
(2,253)	0	(2,253)
(686,062)	0	(686,062)
(627,159)	0	(627,159)
(75,824)	0	(75,824)
0	0	0
(145,781)	0	(145,781)
(7,548,403)	0	(7,548,403)
0	(45,412)	(45,412)
(7,548,403)	(45,412)	(7,593,815)
2,703,377	0	2,703,377
57,586	0	57,586
4,775,137	0	4,775,137
78,565	0	78,565
30,573	0	30,573
7,645,238	0	7,645,238
(27,183)	27,183	0
7,618,055	27,183	7,645,238
69,652	(18,229)	51,423
3,658,146	23,232	3,681,378
\$3,727,798	\$5,003	\$3,732,801

Joseph Badger Local School District

Balance Sheet

Governmental Funds

June 30, 2002

	<u>General</u>	<u>Permanent Improvement Capital Projects</u>	<u>Other Governmental Funds</u>
Assets			
Equity in Pooled Cash and Cash Equivalents	\$2,048,417	\$107,456	\$72,450
Restricted Assets:			
Equity in Pooled Cash and Cash Equivalents	33,356	0	0
Receivables:			
Taxes	2,801,010	60,088	0
Intergovernmental	0	0	6,781
Accrued Interest	5,409	0	0
Materials and Supplies Inventory	23,291	0	0
<i>Total Assets</i>	<u>\$4,911,483</u>	<u>\$167,544</u>	<u>\$79,231</u>
Liabilities and Fund Balances			
Liabilities			
Accounts Payable	\$22,368	\$0	\$0
Accrued Wages	591,953	0	18,709
Intergovernmental Payable	128,954	0	2,829
Deferred Revenue	2,790,075	59,852	6,781
<i>Total Liabilities</i>	<u>3,533,350</u>	<u>59,852</u>	<u>28,319</u>
Fund Balances			
Reserved for Encumbrances	128,140	22,742	2,628
Reserved for Unclaimed Monies	879	0	0
Reserved for Property Taxes	10,935	236	0
Reserved for Budget Stabilization	33,356	0	0
Unreserved, Undesignated, Reported in:			
General Fund	1,204,823	0	0
Special Revenue Funds	0	0	38,380
Capital Projects Funds	0	84,714	9,904
<i>Total Fund Balances</i>	<u>1,378,133</u>	<u>107,692</u>	<u>50,912</u>
<i>Total Liabilities and Fund Balances</i>	<u>\$4,911,483</u>	<u>\$167,544</u>	<u>\$79,231</u>

See accompanying notes to the basic financial statements

Joseph Badger Local School
*Reconciliation of Total Governmental Fund Balance to
 Net Assets of Governmental Activities
 June 30, 2002*

Total Governmental Funds	Total Governmental Fund Balances	\$1,536,737
	<i>Amounts reported for governmental activities in the statement of net assets are different because</i>	
\$2,228,323	Capital assets used in governmental activities are not financial resources and therefore are not reported in the funds.	2,664,661
33,356		
2,861,098	Other long-term assets are not available to pay for current- period expenditures and therefore are deferred in the funds.	
6,781	Delinquent Property Taxes	123,210
5,409	Intergovernmental	6,781
23,291		129,991
<u>\$5,158,258</u>	Long-term liabilities, including bonds payable and accrued interest, are not due and payable in the current period and therefore are not reported in the funds	
	Compensated Absences	(554,729)
	Pension Obligations	(48,862)
		<u>(603,591)</u>
\$22,368	Net Assets of Governmental Activities	<u>\$3,727,798</u>
610,662		
131,783		
2,856,708		
<u>3,621,521</u>		
153,510		
879		
11,171		
33,356		
1,204,823		
38,380		
94,618		
<u>1,536,737</u>		
<u>\$5,158,258</u>		

Joseph Badger Local School District
Statement of Revenues, Expenditures and Changes in Fund Balances
Governmental Funds
For the Fiscal Year Ended June 30, 2002

	General	Permanent Improvement Capital Projects	Other Governmental Funds
Revenues			
Taxes	\$2,705,065	\$60,278	\$0
Intergovernmental	4,769,324	5,813	253,539
Interest	78,565	0	0
Tuition and Fees	29,332	0	0
Extracurricular Activities	0	0	62,456
Charges for Services	303	0	0
Contributions and Donations	2,000	0	3,580
Miscellaneous	30,573	0	0
<i>Total Revenues</i>	<u>7,615,162</u>	<u>66,091</u>	<u>319,575</u>
Expenditures			
Current:			
Instruction:			
Regular	3,765,098	0	54,183
Special	375,294	0	200,830
Vocational	57,887	0	0
Support Services:			
Pupils	267,045	0	1,195
Instructional Staff	203,398	0	3,447
Board of Education	175,876	0	0
Administration	952,467	0	1,895
Fiscal	190,145	0	131
Business	2,263	0	0
Operation and Maintenance of Plant	596,697	0	0
Pupil Transportation	648,736	0	0
Central	75,396	0	5,000
Extracurricular Activities	143,862	0	67,675
Capital Outlay	25,699	28,716	18,473
<i>Total Expenditures</i>	<u>7,479,863</u>	<u>28,716</u>	<u>352,829</u>
<i>Excess of Revenues Over (Under) Expenditures</i>	135,299	37,375	(33,254)
Other Financing Uses			
Transfers Out	(27,183)	0	0
Special and Extraordinary Items			
Land Purchase	(399,999)	0	0
<i>Net Change in Fund Balance</i>	(291,883)	37,375	(33,254)
<i>Fund Balances Beginning of Year</i>	<u>1,670,016</u>	<u>70,317</u>	<u>84,166</u>
<i>Fund Balances End of Year</i>	<u>\$1,378,133</u>	<u>\$107,692</u>	<u>\$50,912</u>

See accompanying notes to the basic financial statements

Joseph Badger Local School District
*Reconciliation of the Statement of Revenues, Expenditures and Changes
in Fund Balances of Governmental Funds to the Statement of Activities
For the Fiscal Year Ended June 30, 2002*

Total Governmental Funds	Net Change in Fund Balances - Total Governmental Funds	(\$287,762)
	<i>Amounts reported for governmental activities in the statement of activities are different because</i>	
\$2,765,343	Governmental funds report capital outlays as expenditures.	
5,028,676	However, in the statement of activities, the cost of those	
78,565	assets is allocated over their estimated useful lives as	
29,332	In the statement of activities the loss of the disposal of fixed	
62,456	outlays exceeded depreciation in the current period.	
303	Capital Outlay	629,622
5,580	Depreciation Expense	<u>(238,645)</u>
30,573		390,977
8,000,828	The District disposed of Capital Assets	(30,461)
	Revenues in the statement of activities that do not provide current financial resources are not reported as revenues in the funds.	
3,819,281	Taxes	(4,380)
576,124	Intergovernmental	<u>6,781</u>
57,887		
268,240	Some expenses reported in the statement of activities such as compensated absences and intergovernmental payable do not require the use of current financial resources and therefore are not reported as expenditures in governmental funds.	
206,845	Compensated Absences	(2,999)
175,876	Intergovernmental Payable	<u>(2,504)</u>
954,362		(5,503)
190,276	<i>Change in Net Assets of Governmental Activities</i>	<u>\$69,652</u>
2,263		
596,697		
648,736		
80,396		
211,537		
72,888		
7,861,408		
139,420		
(27,183)		
(399,999)		
(287,762)		
1,824,499		
\$1,536,737		

Joseph Badger Local School District
Statement of Revenues, Expenditures and Changes
In Fund Balance - Budget (Non-GAAP Basis) and Actual
General Fund
For the Fiscal Year Ended June 30, 2002

	Budgeted Amounts		Actual	Variance With
	Original	Final		Final Budget
				Over
				(Under)
Revenues				
Taxes	\$2,950,819	\$2,710,365	\$2,710,365	\$0
Intergovernmental	4,256,629	4,769,462	4,769,462	0
Interest	100,000	82,706	82,706	0
Tuition and Fees	40,000	29,332	29,332	0
Charges for Services	3,382	303	303	0
Contributions and Donations	25,000	2,000	2,000	0
Miscellaneous	58,000	30,573	30,573	0
<i>Total Revenues</i>	7,433,830	7,624,741	7,624,741	0
Expenditures				
Current:				
Instruction:				
Regular	3,734,761	3,794,800	3,794,800	0
Special	474,054	397,191	397,191	0
Vocational	48,836	57,273	57,273	0
Support Services:				
Pupils	292,689	275,741	275,741	0
Instructional Staff	193,820	201,819	201,819	0
Board of Education	97,465	192,072	192,072	0
Administration	961,040	944,874	944,860	14
Fiscal	193,490	217,525	217,525	0
Operation and Maintenance of Plant	627,800	606,803	606,803	0
Pupil Transportation	661,441	647,567	647,567	0
Central	63,106	75,861	75,861	0
Extracurricular Activities	122,616	144,807	144,807	0
Capital Outlay	16,492	16,544	16,544	0
<i>Total Expenditures</i>	7,487,610	7,572,877	7,572,863	14
<i>Excess of Revenues Over</i>				
<i>(Under) Expenditures</i>	(\$53,780)	\$51,864	\$51,878	\$14

(continued)

Joseph Badger Local School District
Statement of Revenues, Expenditures and Changes
In Fund Balance - Budget (Non-GAAP Basis) and Actual
General Fund (continued)
For the Fiscal Year Ended June 30, 2002

	Budgeted Amounts		Actual	Variance With
	Original	Final		Final Budget
				Over (Under)
Other Financing Uses				
Operating Transfers Out	(\$26,238)	(\$27,183)	(\$27,183)	\$0
Special Item				
Land Purchase	0	(399,999)	(399,999)	0
<i>Net Change in Fund Balance</i>	(80,018)	(375,318)	(375,304)	14
<i>Fund Balance Beginning of Year</i>	2,095,185	2,094,431	2,095,185	0
Prior Year Encumbrances Appropriated	220,313	220,313	220,313	0
<i>Fund Balance End of Year</i>	<u>\$2,235,480</u>	<u>\$1,939,426</u>	<u>\$1,940,194</u>	<u>\$14</u>

See accompanying notes to the basic financial statements

Joseph Badger Local School District

Statement of Fund Net Assets

Enterprise Fund

June 30, 2002

	<u>Food Service</u>
Assets	
Current Assets:	
Equity in Pooled Cash and Cash Equivalents	\$201
Inventory Held for Resale	5,716
Materials and Supplies Inventory	<u>1,153</u>
<i>Total Current Assets</i>	7,070
Capital Assets, Net	<u>37,592</u>
<i>Total Assets</i>	<u>44,662</u>
Liabilities	
Current Liabilities:	
Accrued Wages	20,659
Intergovernmental Payable	<u>14,888</u>
<i>Total Current Liabilities</i>	35,547
Long-Term Liabilities:	
Compensated Absences Payable	<u>4,112</u>
<i>Total Liabilities</i>	<u>39,659</u>
Net Assets	
Invested in Capital Assets	37,592
Unrestricted (Deficit)	<u>(32,589)</u>
<i>Total Net Assets</i>	<u><u>\$5,003</u></u>

See accompanying notes to the basic financial statements

Joseph Badger Local School District
*Statement of Revenues,
Expenses and Changes in Fund Net Assets
Enterprise Fund
For the Fiscal Year Ended June 30, 2002*

	Food Service
Operating Revenues	
Sales	\$189,313
Operating Expenses	
Salaries	117,544
Fringe Benefits	90,793
Purchased Services	10,413
Cost of Sales	140,170
Depreciation	3,439
Other	652
<i>Total Operating Expenses</i>	363,011
<i>Operating Loss</i>	(173,698)
Non-Operating Revenues	
Donated Commodities	23,105
Operating Grants	105,181
<i>Total Non-Operating Revenues</i>	128,286
<i>Loss Before Transfers</i>	(45,412)
Operating Transfers In	27,183
<i>Change in Net Assets</i>	(18,229)
<i>Net Assets Beginning of Year</i>	23,232
<i>Net Assets End of Year</i>	\$5,003

See accompanying notes to the basic financial statements

Joseph Badger Local School District
Statement of Cash Flows
Enterprise Fund
For the Fiscal Year Ended June 30, 2002

	<u>Food Service</u>
<i>Increase (Decrease) in Cash and Cash Equivalents</i>	
<i>Cash Flows from Operating Activities:</i>	
Cash Received from Customers	\$189,313
Cash Payments to Employees for Services	(116,221)
Cash Payments for Employee Benefits	(87,010)
Cash Payments to Suppliers for Goods and Services	(130,501)
Other Cash Payments	(652)
	<u>(145,071)</u>
 <i>Cash Flows from Noncapital Financing Activities</i>	
Operating Grants Received	105,181
Transfers In	27,183
	<u>132,364</u>
 <i>Cash Flows from Capital and Related Financing Activities</i>	
Payments for Capital Acquisitions	(3,443)
	<u>(3,443)</u>
Net Decrease in Cash and Cash Equivalents	(16,150)
 <i>Cash and Cash Equivalents Beginning of Year</i>	<u>16,351</u>
 <i>Cash and Cash Equivalents End of Year</i>	<u>\$201</u>
	(continued)

Joseph Badger Local School District

Statement of Cash Flows

Enterprise Fund (continued)

For the Fiscal Year Ended June 30, 2002

	<u>Food Service</u>
Reconciliation of Operating Loss to Net Cash Used for Operating Activities	
<i>Operating Loss</i>	<u>(\$173,698)</u>
 <i>Adjustments to Reconcile Operating Loss to Net Cash Used for Operating Activities:</i>	
Depreciation	3,439
Donated Commodities Received During Year	23,105
<i>(Increase)/Decrease in Assets:</i>	
Inventory Held for Resale	(2,863)
Materials and Supplies Inventory	(160)
<i>Increase/(Decrease) in Liabilities:</i>	
Accrued Wages	1,323
Compensated Absences Payable	270
Intergovernmental Payable	<u>3,513</u>
 <i>Total Adjustments</i>	 <u>28,627</u>
 <i>Net Cash Used for Operating Activities</i>	 <u><u>(\$145,071)</u></u>

Non-Cash Noncapital Financing Activities:

Federal donated commodities in the amount of \$23,105 were recorded as revenue in the food service enterprise fund.

See accompanying notes to the basic financial statements

Joseph Badger Local School District

Statement of Fiduciary Net Assets

Fiduciary Funds

June 30, 2002

	Private Purpose Trust	
	Scholarship	Agency
Assets		
Equity in Pooled Cash and Cash Equivalents	\$15,364	\$19,774
Receivables:		
Accrued Interest	24	0
<i>Total Assets</i>	<u>15,388</u>	<u>\$19,774</u>
Liabilities		
Due to Students	0	\$19,774
<i>Total Liabilities</i>	<u>0</u>	<u>\$19,774</u>
Net Assets		
Held in Trust for Scholarships	<u>15,388</u>	
<i>Total Net Assets</i>	<u>\$15,388</u>	

See accompanying notes to the basic financial statements

Joseph Badger Local School District
Statement of Changes in Fiduciary Net Assets
Fiduciary Fund
For the Fiscal Year Ended June 30, 2002

	Private Purpose Trust
	Scholarship
Additions	
Interest	\$388
Deductions	
Scholarships Awarded	927
<i>Change in Net Assets</i>	(539)
<i>Net Assets Beginning of Year</i>	15,927
<i>Net Assets End of Year</i>	\$15,388

See accompanying notes to the basic financial statements

This page intentionally left blank.

Joseph Badger Local School District
Notes to the Basic Financial Statements
For the Fiscal Year Ended June 30, 2002

Note 1 - Description of the School District and Reporting Entity

Joseph Badger Local School District is a body politic and corporate established for the purpose of exercising the rights and privileges conveyed to it by the constitution and laws of the State of Ohio.

The School District operates under a locally-elected five-member Board form of government and provides educational services as mandated by the State and federal agencies. This Board of Education controls the School District's four instructional/support facilities staffed by forty-six classified employees, seventy-four certificated full-time teaching personnel, and six administrators who provide services to 1,202 students and other community members.

Reporting Entity

A reporting entity is comprised of the primary government, component units and other organizations that are included to ensure the financial statements are not misleading. The primary government of the School District consists of all funds, departments, boards and agencies that are not legally separate from the School District. For Joseph Badger Local School District, this includes general operations, food service and student related activities of the School District.

Component units are legally separate organizations for which the School District is financially accountable. Component units may also include organizations that are fiscally dependent on the School District in that the School District approves their budget, the issuance of their debt or the levying of their taxes. The School District has no component units.

The School District participates in six jointly governed organizations, two public entity risk pools and a related organization. These organizations are presented in Notes 16, 17 and 18 to the financial statements. These organizations are:

Jointly Governed Organizations:

- Trumbull County Career and Technical Center
- Northeast Ohio Management Information Network
- Northeast Ohio Instructional Media Center
- Trumbull Student Assistance Consortium
- Northeast Ohio Special Education Regional Resource Center
- Region 12 Professional Development Center

Public Entity Risk Pools:

- Ohio School Boards Association Workers' Compensation Group Rating Program
- Trumbull County Schools Employee Insurance Benefits Consortium

Related Organization

- Kinsman Public Library

Note 2 - Summary of Significant Accounting Policies

The financial statements of Joseph Badger Local School District have been prepared in conformity with generally accepted accounting principles (GAAP) as applied to local governmental units. The Governmental Accounting Standards Board (GASB) is the accepted standard-setting body for establishing governmental accounting and financial reporting principles. The School District also applies

Joseph Badger Local School District
Notes to the Basic Financial Statements
For the Fiscal Year Ended June 30, 2002

Financial Accounting Standards Board (FASB) Statements and Interpretations issued on or before November 30, 1989, to its governmental and business-type activities and to its proprietary fund provided they do not conflict with or contradict GASB pronouncements. The most significant of the School District's accounting policies are described below.

A. Basis of Presentation

The School District's basic financial statements consist of government-wide statements, including a statement of net assets and a statement of activities, and fund financial statements which provide a more detailed level of financial information.

Government-wide Financial Statements The statement of net assets and the statement of activities display information about the School District as a whole. These statements include the financial activities of the primary government, except for fiduciary funds. The statements distinguish between those activities of the School District that are governmental (primarily supported by taxes and intergovernmental revenues) and those that are considered business-type activities (primarily supported by fees and charges).

The statement of net assets presents the financial condition of the governmental and business-type activities of the School District at year-end. The statement of activities presents a comparison between direct expenses and program revenues for each program or function of the School District's governmental activities and for the single business-type activity of the School District. Direct expenses are those that are specifically associated with a service, program or department and therefore clearly identifiable to a particular function. Program revenues include charges paid by the recipient of the goods or services offered by the program, grants and contributions that are restricted to meeting the operational or capital requirements of a particular program and interest earned on grants that is required to be used to support a particular program. Revenues which are not classified as program revenues are presented as general revenues of the School District. The comparison of direct expenses with program revenues identifies the extent to which each business segment or governmental function is self-financing or draws from the general revenues of the School District.

Fund Financial Statements During the year, the School District segregates transactions related to certain School District functions or activities in separate funds in order to aid financial management and to demonstrate legal compliance. Fund financial statements are designed to present financial information of the School District at this more detailed level. The focus of governmental and enterprise fund financial statements is on major funds. Each major fund is presented in a separate column. Nonmajor funds are aggregated and presented in a single column. Fiduciary funds are reported by type.

B. Fund Accounting

The School District uses funds to maintain its financial records during the fiscal year. A fund is defined as a fiscal and accounting entity with a self-balancing set of accounts. There are three categories of funds: governmental, proprietary and fiduciary.

Governmental Funds Governmental funds are those through which most governmental functions typically are financed. Governmental fund reporting focuses on the sources, uses and balances of current financial resources. Expendable assets are assigned to the various governmental funds according to the purposes for which they may or must be used. Current liabilities are assigned to the fund from which

Joseph Badger Local School District
Notes to the Basic Financial Statements
For the Fiscal Year Ended June 30, 2002

they will be paid. The difference between governmental fund assets and liabilities is reported as fund balance. The following are the School District's major governmental funds:

General Fund The general fund accounts for all financial resources except those required to be accounted for in another fund. The general fund balance is available to the School District for any purpose provided it is expended or transferred according to the general laws of Ohio.

Permanent Improvement Capital Projects Fund The permanent improvement capital projects fund accumulates property tax revenues to be used for the acquisition, construction, or improvement of major capital facilities other than those financed by proprietary funds.

The other governmental funds of the School District account for grants and other resources whose use is restricted to a particular purpose.

Proprietary Funds Proprietary fund reporting focuses on the determination of operating income, changes in net assets, financial position and cash flows. Proprietary funds are classified as enterprise or internal service; the School District has no internal service funds.

Enterprise Fund Enterprise funds may be used to account for any activity for which a fee is charged to external users for goods or services. The only enterprise fund of the School District accounts for the financial transactions related to the food service operations of the School District.

Fiduciary Funds Fiduciary fund reporting focuses on net assets and changes in net assets. The fiduciary fund category is split into four classifications: pension trust funds, investment trust funds, private-purpose trust funds and agency funds. Trust funds are used to account for assets held by the School District under a trust agreement for individuals, private organizations, or other governments and are therefore not available to support the School District's own programs. The School District's only trust fund is a private purpose trust which accounts for a college scholarship program for students. Agency funds are custodial in nature (assets equal liabilities) and do not involve measurement of results of operations. The School District's agency fund accounts for student managed activities.

C. Measurement Focus

Government-wide Financial Statements The government-wide financial statements are prepared using the economic resources measurement focus. All assets and all liabilities associated with the operation of the School District are included on the statement of net assets. The statement of activities presents increases (i.e. revenues) and decreases (i.e. expenses) in total net assets.

Fund Financial Statements All governmental funds are accounted for using a flow of current financial resources measurement focus. With this measurement focus, only current assets and current liabilities generally are included on the balance sheet. The statement of revenues, expenditures and changes in fund balances reports on the sources (e.g., revenues and other financing sources) and uses (e.g., expenditures and other financing uses) of current financial resources. This approach differs from the manner in which the governmental activities of the government-wide financial statements are prepared. Governmental fund financial statements therefore include reconciliation with brief explanations to better identify the relationship between the government-wide statements and the statements for governmental funds.

Joseph Badger Local School District
Notes to the Basic Financial Statements
For the Fiscal Year Ended June 30, 2002

Like the government-wide statements, the enterprise fund is accounted for on a flow of economic resources measurement focus. All assets and all liabilities associated with the operation of this fund are included on the statement of net assets. The statement of changes in fund net assets presents increases (e.g., revenues) and decreases (e.g., expenses) in net total assets. The statement of cash flows provides information about how the School District finances and meets the cash flow needs of its enterprise fund.

The private purpose trust fund is reported using the economic resources measurement focus.

D. Basis of Accounting

Basis of accounting determines when transactions are recorded in the financial records and reported on the financial statements. Government-wide financial statements are prepared using the accrual basis of accounting. Governmental funds use the modified accrual basis of accounting. Proprietary and fiduciary funds also use the accrual basis of accounting. Differences in the accrual and modified accrual bases of accounting arise in the recognition of revenue, the recording of deferred revenue and in the presentation of expenses versus expenditures.

Revenues - Exchange and Non-exchange Transactions Revenue resulting from exchange transactions, in which each party gives and receives essentially equal value, is recorded on the accrual basis when the exchange takes place. On a modified accrual basis, revenue is recorded in the fiscal year in which the resources are measurable and become available. Available means that the resources will be collected within the current fiscal year or are expected to be collected soon enough thereafter to be used to pay liabilities of the current fiscal year. For the School District, available means expected to be received within sixty days of fiscal year-end.

Nonexchange transactions, in which the School District receives value without directly giving equal value in return, include property taxes, grants, entitlements and donations. On an accrual basis, revenue from property taxes is recognized in the fiscal year for which the taxes are levied. (See Note 6.) Revenue from grants, entitlements and donations is recognized in the fiscal year in which all eligibility requirements have been satisfied. Eligibility requirements include timing requirements, which specify the year when the resources are required to be used or the fiscal year when use is first permitted, matching requirements, in which the School District must provide local resources to be used for a specified purpose, and expenditure requirements, in which the resources are provided to the School District on a reimbursement basis. On a modified accrual basis, revenue from nonexchange transactions must also be available before it can be recognized.

Under the modified accrual basis, the following revenue sources are considered to be both measurable and available at fiscal year-end: property taxes available as an advance, interest, tuition, grants, student fees and rentals.

Deferred Revenue Deferred revenue arises when assets are recognized before revenue recognition criteria have been satisfied.

Property taxes for which there is an enforceable legal claim as of June 30, 2002, but which were levied to finance fiscal year 2003 operations, have been recorded as deferred revenue. Grants and entitlements received before the eligibility requirements are met are also recorded as deferred revenue.

On governmental fund financial statements, receivables that will not be collected within the available period have also been reported as deferred revenue.

Joseph Badger Local School District
Notes to the Basic Financial Statements
For the Fiscal Year Ended June 30, 2002

Expenses/Expenditures On the accrual basis of accounting, expenses are recognized at the time they are incurred.

The measurement focus of governmental fund accounting is on decreases in net financial resources (expenditures) rather than expenses. Expenditures are generally recognized in the accounting period in which the related fund liability is incurred, if measurable. Allocations of cost, such as depreciation and amortization, are not recognized in governmental funds.

D. Cash and Cash Equivalents

Cash received by the School District is pooled for investment purposes. Monies for all funds, including proprietary funds, are maintained in this pool. Individual fund integrity is maintained through the School District's records. Interest in the pool is presented as "equity in pooled cash and cash equivalents" on the financial statements. During fiscal year 2002, investments were limited to a jumbo savings account with Sky Bank and the State Treasury Asset Reserve of Ohio (STAR Ohio). STAR Ohio is an investment pool managed by the State Treasurer's Office, which allows governments within the State to pool their funds for investment purposes. STAR Ohio is not registered with the SEC as an investment company but does operate in a manner consistent with Rule 2a7 of the Investment Company Act of 1940. Investments in STAR Ohio are valued at STAR Ohio's share price, which is the price the investment could be sold for on June 30, 2002.

Following Ohio statutes, the Board of Education has, by resolution, specified the funds to receive an allocation of interest earnings. Interest revenue credited to the general fund during fiscal year 2002 amounted to \$78,565 includes \$8,157 assigned from other School District funds.

Investments of the cash management pool and investments with an original maturity of three months or less at the time they are purchased by the School District are presented on the financial statements as cash equivalents.

E. Restricted Assets

Assets are reported as restricted when restrictions on their use change the normal understanding of the availability of the asset. Such constraints are either imposed by creditors, contributors, grantors, or laws of other governments or imposed by enabling legislation. Restricted assets in the general fund is money required by State statute to be set-aside to create a reserve for budget stabilization. See Note 19 for additional information regarding set-asides.

F. Inventory

Inventories are presented at cost on a first-in, first-out basis and are expended/expensed when used.

Inventories of proprietary funds consist of donated food, purchased food, and school supplies held for resale, and materials and supplies held for consumption.

G. Capital Assets

General capital assets are those assets not specifically related to activities reported in the proprietary funds. These assets generally result from expenditures in the governmental funds. These assets are reported in the governmental activities column of the government-wide statement of net assets but are not reported in the fund financial statements. Capital assets utilized by the enterprise fund are reported both in the business-type activities column of the government-wide statement of net assets and in the fund.

Joseph Badger Local School District
Notes to the Basic Financial Statements
For the Fiscal Year Ended June 30, 2002

All capital assets are capitalized at cost (or estimated historical cost) and updated for additions and retirements during the year. Donated fixed assets are recorded at their fair market values as of the date received. The School District maintains a capitalization threshold of five hundred dollars. The School District does not possess any infrastructure. Improvements are capitalized; the costs of normal maintenance and repairs that do not add to the value of the asset or materially extend an asset's life are not. Interest incurred during the construction of capital assets utilized by the enterprise fund is also capitalized.

All reported capital assets except land are depreciated. Improvements are depreciated over the remaining useful lives of the related capital assets. Depreciation is computed using the straight-line method over the following useful lives:

Description	Governmental Activities Estimated Lives	Business-Type Activities Estimated Lives
Land Improvements	50 years	N/A
Buildings and Improvements	50 years	N/A
Furniture and Equipment	8-20 years	8-20 years
Vehicles	10 years	N/A
Textbooks	5 years	N/A

H. Interfund Balances

On fund financial statements, receivables and payables resulting from short-term interfund loans are classified as "interfund receivables/payables." These amounts are eliminated in the governmental and business-type activities columns of the statement of net assets, except for the net residual amounts due between governmental and business-type activities, which are presented as internal balances.

I. Compensated Absences

Vacation benefits are accrued as a liability as the benefits are earned if the employees' rights to receive compensation are attributable to services already rendered and it is probable that the School District will compensate the employees for the benefits through paid time off or some other means. The School District records a liability for accumulated unused vacation time when earned for all employees with more than one year of service.

Sick leave benefits are accrued as a liability using the vesting method. The liability includes the employees who are currently eligible to receive termination benefits and those that the School District has identified as probable of receiving payment in the future. The amount is based on accumulated sick leave and employee wage rates at fiscal year end taking into consideration any limits specified in the School District's termination policy.

J. Accrued Liabilities and Long-term Obligations

All payables, accrued liabilities and long-term obligations are reported in the government-wide financial statements, and all payables, accrued liabilities and long-term obligations payable from the enterprise fund are reported on the enterprise fund financial statements.

In general, governmental fund payables and accrued liabilities that, once incurred, are paid in a timely manner and in full from current financial resources, are reported as obligations of the funds. However,

Joseph Badger Local School District
Notes to the Basic Financial Statements
For the Fiscal Year Ended June 30, 2002

claims and judgements, compensated absences, special termination benefits and contractually required pension contributions that will be paid from governmental funds are reported as a liability in the fund financial statements only to the extent that they are due for payment during the current year. Bonds, capital leases and long term loans are recognized as a liability on the fund financial statements when due.

K. Fund Balance Reserves

The School District reserves those portions of fund equity which are legally segregated for a specific future use or which do not represent available expendable resources and therefore are not available for appropriation or expenditure. Unreserved fund balance indicates that portion of fund equity which is available for appropriation in future periods. Fund equity reserves have been established for encumbrances, unclaimed monies, property taxes, and budget stabilization.

The reserve for property taxes represents taxes recognized as revenue under generally accepted accounting principles but not available for appropriation under State statute. The reserve for unclaimed monies represents cash that, under Ohio law, must remain unclaimed for five years before it becomes available for appropriation. The reserve for budget stabilization represents money set aside to protect against cyclical changes in revenues and expenditures.

L. Net Assets

Net assets represent the difference between assets and liabilities. Net assets invested in capital assets, net of related debt consists of capital assets, net of accumulated depreciation, reduced by the outstanding balances of any borrowings used for the acquisition, construction or improvement of those assets. Net assets are reported as restricted when there are limitations imposed on their use either through the enabling legislation adopted by the School District or through external restrictions imposed by creditors, grantors or laws or regulations of other governments.

The School District applies restricted resources when an expense is incurred for purposes for which both restricted and unrestricted net assets are available.

M. Operating Revenues and Expenses

Operating revenues are those revenues that are generated directly from the primary activity of the proprietary funds. For the School District, these revenues are sales for food service. Operating expenses are necessary costs incurred to provide the good or service that is the primary activity of the fund. Revenues and expenses not meeting this definition are reported as non-operating.

N. Contributions of Capital

Contributions of capital in proprietary fund financial statements arise from outside contributions of fixed assets, or from grants or outside contributions of resources restricted to capital acquisition and construction.

O. Interfund Activity

Transfers between governmental and business-type activities on the government-wide statements are reported in the same manner as general revenues.

Joseph Badger Local School District
Notes to the Basic Financial Statements
For the Fiscal Year Ended June 30, 2002

Exchange transactions between funds are reported as revenues in the seller funds and as expenditures/expenses in the purchaser funds. Flows of cash or goods from one fund to another without a requirement for repayment are reported as interfund transfers. Interfund transfers are reported as other financing sources/uses in governmental funds and after nonoperating revenues/expenses in proprietary funds. Repayments from funds responsible for particular expenditures/expenses to the funds that initially paid for them are not presented on the financial statements.

P. Extraordinary and Special Items

Extraordinary items are transactions or events that are both unusual in nature and infrequent in occurrence. Special items are transactions or events that are within the control of the Board of Education and that are either unusual in nature or infrequent in occurrence. This year the Joseph Badger Local Board of Education received news that they would be allocated funds by the State of Ohio to replace all four of our aging buildings. This meant that the Board needed to purchase a minimum of fifty acres of land to enable the construction of a single building to house pre-kindergarten through twelfth grade. It should be mentioned here that one hundred acres of land central to the District population and travel time has been purchased this fiscal year for \$399,999. There will be a local share levy necessary to pass before funding will be released.

Q. Estimates

The preparation of the financial statements in conformity with generally accepted accounting principles requires management to make estimates and assumptions that affect the amounts reported in the financial statements and accompanying notes. Actual results may differ from those estimates.

R. Budgetary Data

All funds, other than agency funds, are legally required to be budgeted and appropriated. The major documents prepared are the tax budget, the appropriation resolution and the certificate of estimated resources, which are prepared on the budgetary basis of accounting. The tax budget demonstrates a need for existing or increased tax rates. The certificate of estimated resources establishes a time limit on the amounts that the Board of Education may appropriate. The appropriation resolution is the Board's authorization to spend resources and sets annual limits on expenditures plus encumbrances at a level of control selected by the Board. The legal level of control has been established by the Board of Education at the object level within each fund and function. Any budgetary modifications at this level may only be made by resolution of the Board of Education.

The certificate of estimated resources may be amended during the year if projected increases or decreases in revenue are identified by the School District Treasurer. The amounts reported as the original budgeted amounts in the budgetary statements reflect the amounts in the certificate when the original appropriations were adopted. The amounts reported in the budgetary statements reflect the amounts in the amended certificate in effect at the time the final appropriations were passed by the Board of Education.

The appropriation resolution is subject to amendment by the Board throughout the year with the restriction that appropriations may not exceed estimated revenues. The amounts reported as the original budgeted amounts reflect the first appropriation for that fund that covered the entire fiscal year, including amounts automatically carried over from prior years. The amounts reported as the final budgeted amounts represent the final appropriation amounts passed by the Board during the fiscal year.

Joseph Badger Local School District
Notes to the Basic Financial Statements
For the Fiscal Year Ended June 30, 2002

Note 3 – Compliance and Accountability

A. Compliance

The following funds had original appropriations in excess of estimated resources plus carryover balance is in violation of Section 5705.39, Ohio Revised Code:

Fund/Object	Appropriations	Estimated Resources plus Carryover Balances	Excess
Special Revenue			
Professional Development	\$6,503	\$6,703	\$200
SchoolNet Professional Development	5,787	6,929	1,142
Title VI-B	54,000	72,919	18,919
Title VI-R	24,000	31,501	7,501
Eisenhower	5,000	6,431	1,431

The budgetary violations were corrected by year end and management has indicated the appropriations will be closely monitored to ensure that no future violations occur.

B. Accountability

The following funds have deficit fund balances as of June 30, 2002:

Special Revenue Funds:	Amount
Title I	\$8,323
Title VI-R	96

The special revenue funds' deficits are caused by the recognition of expenditures on the modified accrual basis of accounting. The general fund is liable for any deficits in these funds and provides operating transfers when cash is required, not when accruals occur.

Note 4 - Budgetary Basis of Accounting

While the School District is reporting financial position, results of operations and changes in fund balance on the basis of generally accepted accounting principles (GAAP), the budgetary basis as provided by law is based upon accounting for certain transactions on a basis of cash receipts, disbursements and encumbrances. The Statement of Revenues, Expenditures and Changes in Fund Balance - Budget (Non-GAAP Basis) and Actual presented for the general fund is presented on the budgetary basis to provide a meaningful comparison of actual results with the budget. The major differences between the budget basis and GAAP basis are as follows:

1. Revenues are recorded when received in cash (budget) as opposed to when susceptible to accrual (GAAP).
2. Expenditures are recorded when paid in cash (budget) as opposed to when the fund liability is incurred (GAAP).
3. Encumbrances are treated as expenditures (budget) rather than as a reservation of fund balance (GAAP).

Joseph Badger Local School District
Notes to the Basic Financial Statements
For the Fiscal Year Ended June 30, 2002

The following table summarizes the adjustments necessary to reconcile the GAAP basis statements to the budgetary basis statements for the general fund.

Net Change in Fund Balance	
GAAP Basis	(\$291,883)
Net Adjustment for Revenue Accruals	9,579
Net Adjustment for Expenditure Accruals	48,579
Adjustment for Encumbrances	<u>(141,579)</u>
Budget Basis	<u>(\$375,304)</u>

Note 5 - Deposits and Investments

State statutes classify monies held by the School District into three categories.

Active deposits are public deposits necessary to meet current demands on the treasury. Such monies must be maintained either as cash in the School District Treasury, in commercial accounts payable or withdrawable on demand, including negotiable order of withdrawal (NOW) accounts, or in money market deposit accounts.

Inactive monies are public deposits that the Board of Education has identified as not required for use within the current five year period of designation of depositories. Inactive deposits must either be evidenced by certificates of deposit maturing not later than the end of the current period of designation of depositories, or by savings or deposit accounts including, but not limited to, passbook accounts.

Interim deposits are deposits of interim monies. Interim monies are those monies which are not needed for immediate use but which will be needed before the end of the current period of designation of depositories. Interim monies must be evidenced by time certificates of deposit maturing not more than one year from the date of deposit or by savings or deposit accounts including passbook accounts.

Protection of the School District's deposits is provided by the Federal Deposit Insurance Corporation (FDIC), by eligible securities pledged by the financial institution as security for repayment, by surety company bonds deposited with the treasurer by the financial institution or by a single collateral pool established by the financial institution to secure the repayment of all public monies deposited with the institution.

Interim monies are to be deposited or invested in the following securities:

1. United States treasury notes, bills, bonds, or any other obligation or security issued by the United States treasury or any other obligation guaranteed as to principal and interest by the United States;

Joseph Badger Local School District
Notes to the Basic Financial Statements
For the Fiscal Year Ended June 30, 2002

2. Bonds, notes, debentures, or any other obligations or securities issued by any federal government agency or instrumentality, including but not limited to, the federal national mortgage association, federal home loan bank, federal farm credit bank, federal home loan mortgage corporation, government national mortgage association, and student loan marketing association. All federal agency securities shall be direct issuances of federal government agencies or instrumentalities;
3. Written repurchase agreements in the securities listed above provided that the market value of the securities subject to the repurchase agreement must exceed the principal value of the agreement by at least two percent and be marked to market daily, and that the term of the agreement must not exceed thirty days;
4. Bonds and other obligations of the State of Ohio;
5. No-load money market mutual funds consisting exclusively of obligations described in division (1) or (2) of this section and repurchase agreements secured by such obligations, provided that investments in securities described in this division are made only through eligible institutions;
6. The State Treasurer's investment pool (STAR Ohio);
7. Certain bankers' acceptances and commercial paper notes for a period not to exceed one hundred eighty days from the purchase date in an amount not to exceed twenty-five percent of the interim monies available for investment at any one time; and,
8. Under limited circumstances, corporate debt interests rated in either of the two highest rating classifications by at least two nationally recognized rating agencies.

Investments in stripped principal or interest obligations, reverse repurchase agreements and derivatives are prohibited. The issuance of taxable notes for the purpose of arbitrage, the use of leverage and short selling are also prohibited. An investment must mature within five years from the date of purchase unless matched to a specific obligation or debt of the School District, and must be purchased with the expectation it will be held to maturity. Investments may only be made through specified dealers and institutions. Payment for investments may be made only upon delivery of the securities representing the investments to the treasurer or, if the securities are not represented by a certificate, upon receipt of confirmation of transfer from the custodian.

The following information classifies deposits and investments by categories of risk as defined in GASB Statement 3, "Deposits with Financial Institutions, Investments and Reverse Repurchase Agreements".

Deposits At year-end, the carrying amount of the School District's deposits was \$1,877,879 and the bank balance was \$2,517,365. \$100,000 of the bank balance was covered by federal depository insurance and \$2,417,365 was uninsured and uncollateralized. Although all state statutory requirements for the deposit of money had been followed, noncompliance with federal requirements could potentially subject the School District to a successful claim by the Federal Deposit Insurance Corporation.

Investments The School District's investments are required to be categorized to give an indication of the level of risk assumed by the School District at year end. Category 1 includes investments that are insured or registered or for which the securities are held by the School District or its agent in the School District's

Joseph Badger Local School District
Notes to the Basic Financial Statements
For the Fiscal Year Ended June 30, 2002

name. Category 2 includes uninsured and unregistered investments for which securities are held by the counterparty's trust department or an agent in the School District's name. Category 3 includes uninsured and unregistered investments for which the securities are held by the counterparty, or by its trust department or agent but not in the School District's name. Investments in STAR Ohio are unclassified investments since they are not evidenced by securities that exist in physical or book entry form.

	Fair Value
Investment in State Treasurer's Investment Pool	\$419,139

The classification of cash and cash equivalents, and investments on the basic financial statements is based on criteria set forth in GASB Statement No. 9. A reconciliation between the classifications of cash and investments on the basic financial statements and the classification per GASB Statement No. 3 is as follows:

	Cash and Cash Equivalents/ Deposits	Investments
GASB Statement 9	\$2,297,018	\$0
Investments which are part of a cash management pool:		
Investment in State Treasurer's Investment Pool	(419,139)	419,139
GASB Statement 3	\$1,877,879	\$419,139

Note 6- Property Taxes

Property taxes are levied and assessed on a calendar year basis while the school district fiscal year runs from July through June. First half tax collections are received by the school district in the second half of the fiscal year. Second half tax distributions occur in the first half of the following fiscal year. Property taxes include amounts levied against all real, public utility and tangible personal property located in the School District. Property tax revenue received during calendar 2002 for real and public utility property taxes represents collections of calendar 2001 taxes. Property tax payments received during calendar 2002 for tangible personal property (other than public utility property) are for calendar 2002 taxes.

2002 real property taxes are levied after April 1, 2002, on the assessed value as of January 1, 2002, the lien date. Assessed values are established by State law at thirty-five percent of appraised market value.

Public utility tangible personal property currently is assessed at varying percentages of true value; public utility real property is assessed at thirty-five percent of true value. 2002 public utility property taxes became a lien December 31, 2001, are levied after April 1, 2002 and are collected in 2002 with real property taxes. 2002 tangible personal property taxes are levied after April 1, 2001, on the value as of December 31, 2001. Collections are made in 2002. Tangible personal property assessments are twenty-five percent of true value.

Joseph Badger Local School District
Notes to the Basic Financial Statements
For the Fiscal Year Ended June 30, 2002

The assessed values upon which the fiscal year 2002 taxes were collected are:

	2001 Second- Half Collections		2002 First- Half Collections	
	Amount	Percent	Amount	Percent
Agricultural /Residential and Other Real Estate	\$77,973,410	85.13%	\$79,432,970	85.31%
Public Utility Personal	5,726,310	6.25	4,712,220	5.06
Tangible Personal Property	7,890,532	8.62	8,971,486	9.63
Total	<u>\$91,590,252</u>	<u>100.00%</u>	<u>\$93,116,676</u>	<u>100.00%</u>
Tax rate per \$1,000 of assessed valuation	\$38.40		\$38.30	

Real property taxes are payable annually or semiannually. If paid annually, payment is due December 31; if paid semiannually, the first payment is due December 31 with the remainder payable by June 20. Under certain circumstances, State statute permits later payment dates to be established.

Tangible personal property taxes paid by multi-county taxpayers are due September 20. Single county taxpayers may pay annually or semiannually. If paid annually, payment is due April 30; if paid semiannually, the first payment is due April 30, with the remainder payable by September 20. Tangible personal property taxes paid by April 30 are usually received by the School District prior to June 30.

The School District receives property taxes from Trumbull County. The County Auditor periodically advances to the School District its portion of the taxes collected. Second-half real property tax payments collected by the county by June 30, 2002, are available to finance fiscal year 2002 operations. The amount available to be advanced can vary based on the date the tax bills are sent.

Accrued property taxes receivable include real, personal property and public utility taxes which are measurable as of June 30, 2002 and for which there is an enforceable legal claim. Although total property tax collections for the next fiscal year are measurable, only the amount of real property taxes available as an advance at June 30 were levied to finance current fiscal year operations. The receivable is therefore offset by a credit to deferred revenue for that portion not levied to finance current year operations. The amount available as an advance at June 30 is recognized as revenue. At June 30, 2002, \$10,935 was available as an advance to the general fund and \$236 was available to the permanent improvement capital projects fund. On a full accrual basis, collectible delinquent property taxes have been recorded as a receivable and revenue while on a modified accrual basis the revenue is deferred.

Note 7 - Receivables

Receivables at June 30, 2002, consisted of taxes, accounts (rent and student fees), intergovernmental grants and interest. All receivables are considered collectible in full due to the ability to foreclose for the nonpayment of taxes, the stable condition of State programs, and the current year guarantee of federal funds. All receivables are expected to be collected within one year.

The Title I special revenue fund had grant receivables in the amount of \$6,781.

Joseph Badger Local School District
Notes to the Basic Financial Statements
For the Fiscal Year Ended June 30, 2002

Note 8 - Capital Assets

Capital asset activity for the fiscal year ended June 30, 2002, was as follows:

	Balance 6/30/01	Additions	Deductions	Balance 6/30/02
Governmental Activities				
Capital Assets not being depreciated:				
Land	\$119,500	\$399,999	\$0	\$519,499
Capital Assets being depreciated:				
Land Improvements	121,856	3,450	(5,498)	119,808
Buildings and Improvements	2,214,939	0	(15,316)	2,199,623
Furniture and Equipment	1,537,622	74,973	(120,318)	1,492,277
Vehicles	993,810	100,202	0	1,094,012
Textbooks	341,691	50,998	0	392,689
Total Capital Assets being depreciated	5,209,918	229,623	(141,132)	5,298,409
Less Accumulated Depreciation:				
Land Improvements	(65,486)	(3,873)	5,498	(63,861)
Buildings and Improvements	(1,456,322)	(36,046)	11,148	(1,481,220)
Furniture and Equipment	(776,485)	(77,079)	94,025	(759,539)
Vehicles	(561,434)	(71,675)	0	(633,109)
Textbooks	(165,546)	(49,972)	0	(215,518)
Total Accumulated Depreciation	(3,025,273)	(238,645) *	110,671	(3,153,247)
Total Capital Assets being depreciated	2,184,645	(9,022)	(30,461)	2,145,162
Governmental Activities Capital Assets, Net	\$2,304,145	\$390,977	(\$30,461)	\$2,664,661
Business-Type Activities				
Furniture and Equipment	\$153,762	\$3,443	\$0	\$157,205
Less Accumulated Depreciation	(116,174)	(3,439)	0	(119,613)
Business-Type Activities Capital Assets, Net	\$37,588	\$4	\$0	\$37,592

Joseph Badger Local School District
Notes to the Basic Financial Statements
For the Fiscal Year Ended June 30, 2002

* Depreciation expense was charged to governmental functions as follows:

Instruction:	
Regular	\$66,228
Special	24,224
Vocational	263
Support Services:	
Pupils	413
Instructional Staff	8,541
Board of Education	16,655
Administration	6,295
Fiscal	3,783
Operation and Maintenance of Plant	28,754
Pupil Transportation	82,059
Central	544
Extracurricular Activities	886
Total Depreciation Expense	\$238,645

Note 9 - Risk Management

A. Property and Liability

The School District is exposed to various risks of loss related to torts; theft of, damage to, and destruction of assets; errors and omissions; injuries to employees and natural disasters. During fiscal year 2002, the School District contracted with Nationwide Insurance for property and fleet insurance, liability insurance and inland marine coverage. Coverage provided by Nationwide Insurance is as follows:

Building and Contents - Replacement Cost (\$1,000 deductible)	\$17,603,400
Inland Marine Coverage	
Musical (\$250 deductible)	500,000
Video (\$250 deductible)	100,000
EDP (\$250 deductible)	160,000
Boiler and Machinery (\$2,500 deductible)	17,603,400
Crime Insurance (\$250 deductible)	100,000
Automobile Liability (no deductible)	2,000,000
Uninsured Motorists (no deductible)	2,000,000
General Liability	
Per Occurrence	1,000,000
Total Per Year	3,000,000

Settled claims have not exceeded this commercial coverage in any of the past three years. There has not been a significant reduction in coverage from the prior year.

B. Workers' Compensation

For fiscal year 2002, the School District participated in the Ohio School Board Association Workers' Compensation Group Rating Program (GRP), an insurance purchasing pool. The intent of the GRP is to achieve the benefit of a reduced premium for the School District by virtue of its grouping and

Joseph Badger Local School District
Notes to the Basic Financial Statements
For the Fiscal Year Ended June 30, 2002

representation with other participants in the GRP. The workers' compensation experience of the participating school districts is calculated as one experience and a common premium rate is applied to all school districts in the GRP. Each participant pays its workers' compensation premium to the State based on the rate for the GRP rather than its individual rate. Total savings are then calculated and each participant's individual performance is compared to the overall savings percentage of the GRP. A participant will then either receive money from or be required to contribute to the "equity pooling fund." This "equity pooling" arrangement insures that each participant shares equally in the overall performance of the GRP. Participation in the GRP is limited to school districts that can meet the GRP's selection criteria. The firm of Gates McDonald & Company provides administrative, cost control and actuarial services to the GRP.

C. Employee Medical Benefits

The School District has contracted with the Trumbull County Schools Employee Insurance Benefits Consortium to provide employee medical/surgical benefits. The Trumbull County Schools Employee Insurance Benefits Consortium is a shared risk pool comprised of sixteen Trumbull County school districts. Rates are set through an annual calculation process. The School District pays a monthly contribution, which is placed in a common fund from which claim payments are made for all participating school districts. Claims are paid for all participants regardless of claims flow. The board of directors has a right to return monies to a district subsequent to the settlement of all expenses and claims if a district withdraws from the pool.

Note 10 - Defined Benefit Pension Plans

A. School Employees Retirement System

The School District contributes to the School Employees Retirement System (SERS), a cost-sharing multiple employer defined benefit pension plan. SERS provides retirement and disability benefits, annual cost-of-living adjustments, and death benefits to plan members and beneficiaries. Authority to establish and amend benefits is provided by State statute per Chapter 3309 of the Ohio Revised Code. SERS issues a publicly available, stand-alone financial report that includes financial statements and required supplementary information. That report may be obtained by writing to the School Employees Retirement System, 300 East Broad Street, Suite 100, Columbus, Ohio 43215-3746.

Plan members are required to contribute 9 percent of their annual covered salary and the School District is required to contribute at an actuarially determined rate. The current School District rate is 14 percent of annual covered payroll. A portion of the School District's contribution is used to fund pension obligations with the remainder being used to fund health care benefits; for fiscal year 2002, 5.46 percent of annual covered salary was the portion used to fund pension obligations. For fiscal year 2001, 4.2 percent was used to fund pension obligations. The contribution requirements of plan members and employers are established and may be amended, up to a statutory maximum amount, by the SERS' Retirement Board. The School District's required contributions for pension obligations to SERS for the fiscal years ended June 30, 2002, 2001, and 2000 were \$44,045, \$33,212 and \$49,747, respectively; 49.71 percent has been contributed for fiscal year 2002 and 100 percent for fiscal years 2001 and 2000. \$22,150, represents the unpaid contribution for fiscal year 2002.

Joseph Badger Local School District
Notes to the Basic Financial Statements
For the Fiscal Year Ended June 30, 2002

B. State Teachers Retirement System

The School District contributes to the State Teachers Retirement System of Ohio (STRS), a cost-sharing multiple employer public employee retirement system. STRS provides retirement and disability benefits, annual cost-of-living adjustments, and death and survivor benefits to members and beneficiaries. Benefits are established by Chapter 3307 of the Ohio Revised Code. STRS issues a publicly available, stand-alone financial report that includes financial statements and required supplementary information for STRS. That report may be obtained by writing to the State Teachers Retirement System, 275 East Broad Street, Columbus, Ohio 43215-3371.

For the fiscal year ended June 30, 2002, plan members were required to contribute 9.3 percent of their annual covered salaries. The School District was required to contribute 14 percent; 9.5 percent was the portion used to fund pension obligations. Contribution rates are established by STRS, upon recommendations of its consulting actuary, not to exceed statutory maximum rates of 10 percent for members and 14 percent for employers. The School District's required contributions for pension obligations to STRS for the fiscal years ended June 30, 2002, 2001, and 2000 were \$313,829, \$316,215 and \$196,808, respectively; 80.63 percent has been contributed for fiscal year 2002 and 100 percent for fiscal years 2001 and 1999. \$60,779 represents the unpaid contribution for fiscal year 2002.

C. Social Security System

Effective July 1, 1991, all employees not otherwise covered by the School Employees Retirement System or the State Teachers Retirement System have an option to choose Social Security or the School Employees Retirement System/State Teachers Retirement System. As of June 30, 2002, three of the members of the Board of Education have elected Social Security. The Board's liability is 6.2 percent of wages paid.

Note 11 - Postemployment Benefits

The School District provides comprehensive health care benefits to retired teachers and their dependents through the State Teachers Retirement System (STRS), and to retired non-certified employees and their dependents through the School Employees Retirement System (SERS). Benefits include hospitalization, physicians' fees, prescription drugs and reimbursement of monthly Medicare premiums. Benefit provisions and the obligations to contribute are established by the Systems based on authority granted by State statute. Both systems are on a pay-as-you-go basis.

All STRS benefit recipients and sponsored dependents are eligible for health care coverage. The STRS Board has statutory authority over how much, if any, of the health care costs will be absorbed by STRS. Most benefit recipients pay a portion of the health care cost in the form of a monthly premium. By law, the cost of coverage paid from STRS funds is included in the employer contribution rate, currently 14 percent of covered payroll. For the fiscal year ended June 30, 2002, the STRS Board allocated employer contributions equal to 4.5 percent of covered payroll to the Health Care Reserve Fund. For the School District, this amount equaled \$148,656 for fiscal year 2002.

STRS pays health care benefits from the Health Care Reserve Fund. At June 30, 2001, (the latest information available) the balance in the Fund was \$3.256 billion. For the year ended June 30, 2001, net health care costs paid by STRS were \$300,772,000 and STRS had 102,132 eligible benefit recipients.

Joseph Badger Local School District
Notes to the Basic Financial Statements
For the Fiscal Year Ended June 30, 2002

For SERS, coverage is made available to service retirees with ten or more fiscal years of qualifying service credit, and to disability and survivor benefit recipients. Members retiring on or after August 1, 1989, with less than twenty-five years of service credit must pay a portion of their premium for health care. The portion is based on years of service up to a maximum of 75 percent of the premium.

After the allocation for basic benefits, the remainder of the employer's 14 percent contribution is allocated to providing health care benefits. For the fiscal year ended June 30, 2002, employer contributions to fund health care benefits were 8.54 percent of covered payroll, a decrease of 1.26 percent from fiscal year 2001. In addition, SERS levies a surcharge to fund health care benefits equal to 14 percent of the difference between a minimum pay and the member's pay, pro-rated for partial service credit. For fiscal year 2002, the minimum pay was established at \$12,400. For the School District, the amount contributed to fund health care benefits, including the surcharge, during the 2002 fiscal year equaled \$82,904.

The surcharge, added to the unallocated portion of the 14 percent employer contribution rate, provides for maintenance of the asset target level for the health care fund. The target level for the health care reserve is 150 percent of the annual health care expenses. Expenses for health care for the fiscal year ended June 30, 2001 (the latest information available), were \$161,439,934 and the target level was \$242.2 million. At June 30, 2001, SERS had net assets available for payment of health care benefits of \$315.7 million. SERS has approximately 50,000 participants currently receiving health care benefits.

Note 12 - Other Employee Benefits

A. Compensated Absences

The criteria for determining vacation and sick leave benefits are derived from negotiated agreements and State laws. Classified employees earn ten to twenty five days of vacation per year, depending upon length of service. Accumulated unused vacation time is paid to classified employees upon termination of employment. Teachers do not earn vacation time.

Each employee earns sick leave at the rate of one and one-fourth days per month. Sick leave may be accumulated with no maximum. Upon retirement, payment is made for one fourth of the total sick leave accumulation, up to a maximum accumulation of 80 days for both classified and certified employees. An employee receiving such payment must meet the retirement provisions set by STRS or SERS.

B. Life Insurance

The School District provides life insurance and accidental death and dismemberment insurance to most employees through the Trumbull County Schools Employee Insurance Benefits Consortium at a cost of \$.125 per month per \$1,000 in coverage. The coverage provided follows:

Class	Class Description	Amount of Coverage	Class	Class Description	Amount of Coverage
I	Full Time Certified	\$50,000	V	Half Day Classified	\$12,500
II	Full Time Classified	25,000	VI	Classified Cafeteria Aide	12,500
III	Part Time Certified	25,000	VII	Half Day Custodial	12,500
IV	Treasurer	200,000	VIII	Building Secretaries	25,000
			IX	Administrators	50,000

Joseph Badger Local School District
Notes to the Basic Financial Statements
For the Fiscal Year Ended June 30, 2002

Note 13 - Long-Term Liabilities

The changes in the School District's long-term obligations during the year consist of the following:

	Principal Outstanding 6/30/01	Additions	Reductions	Principal Outstanding 6/30/02	Amounts Due in One Year
Governmental Activities					
Compensated Absences	\$551,730	\$4,528	\$1,529	\$554,729	\$1,529
Business-Type Activities					
Compensated Absences	\$3,842	\$270	\$0	\$4,112	\$0

Compensated absences will be paid from the general and the title I governmental funds.

At June 30, 2002, the School District's overall legal debt margin was \$8,380,501 with an unvoted debt margin of \$93,117.

Note 14 – Interfund Transfers

Transfers made during the year ended June 30, 2002 were as follows:

Fund Name	Transfers In	Transfers Out
General Fund	\$0	\$27,183
Food Service Fund	27,183	0
Totals	\$27,183	\$27,183

A transfer was made from the general fund into the food service business type fund to provide for the payment of expenses and maintain the food service operations for the students.

Note 15 - Contingencies

A. Grants

The School District received financial assistance from federal and state agencies in the form of grants. The disbursement of funds received under these programs generally requires compliance with terms and conditions specified in the grant agreements and are subject to audit by the grantor agencies. Any disallowed claims resulting from such audits could become a liability of the general fund or other applicable funds. However, in the opinion of management, any such disallowed claims will not have a material adverse effect on the overall financial position of the School District at June 30, 2002.

B. Litigation

Joseph Badger Local School District is not currently a party to any legal proceedings.

Joseph Badger Local School District
Notes to the Basic Financial Statements
For the Fiscal Year Ended June 30, 2002

Note 16 - Jointly Governed Organizations

A. Trumbull County Career and Technical Center

The Trumbull County Career and Technical Center is a distinct political subdivision of the State of Ohio operated under the direction of a board consisting of one representative from each of the fifteen participating school districts. The board is responsible for approving its own budgets, appointing personnel, and accounting and finance related activities. Joseph Badger Local School District students may attend the vocational school. Each school district's control is limited to its representation on the board. During fiscal year 2002, no monies were paid to the Career and Technical Center. Financial information can be obtained from the Trumbull County Career and Technical Center, Treasurer, at 528 Educational Highway, Warren, Ohio, 44483.

B. Northeast Ohio Management Information Network (NEOMIN)

The Northeast Ohio Management Information Network (NEOMIN) is a jointly governed organization among thirty school districts in Trumbull and Ashtabula counties. The jointly governed organization was formed for the purpose of applying modern technology with the aid of computers and other electronic equipment to administrative and instructional functions among member districts. Each of the districts supports NEOMIN based upon a per pupil charge. The School District paid \$18,434 to NEOMIN during fiscal year 2002.

Superintendents of the participating school districts are eligible to be voting members of the Governing Board which consists of ten members: the Trumbull and Ashtabula County superintendents (permanent members), three superintendents from Ashtabula County school districts, three superintendents from Trumbull County school districts, and a principal and treasurer (non-voting members who must be employed by a participating school district, the fiscal agent or NEOMIN). The School District was represented on the Governing Board during fiscal year 2002. The degree of control exercised by any participating school district is limited to its representation on the Governing Board. Financial information can be obtained from the Trumbull County Educational Service Center, at 347 North Park Avenue, Warren, Ohio, 44481.

C. Northeast Ohio Instructional Media Center (NEOIMC)

The Northeast Ohio Instructional Media Center (NEOIMC) is a jointly governed organization among forty-five school districts. The jointly governed organization was formed for the purpose of providing quality films and/or other media to support the educational curricula of the School District. Each member pays a monthly premium based on use of the media materials.

NEOIMC is governed by an advisory committee made up of a member from a parochial school, a joint vocational school, one County Superintendent from each participating county, one city superintendent and two local superintendents rotating every two years. The degree of control exercised by any participating school district is limited to its representation on the Board. In fiscal year 2002, the School District paid \$150, which represents 1.71 percent of total contributions. Financial information can be obtained by contacting the treasurer at the Trumbull County Educational Service Center, at 347 North Park Avenue, Warren, Ohio, 44481.

D. Trumbull Student Assistance Consortium (TSAC)

The Trumbull Student Assistance Consortium (TSAC) is a jointly governed organization among sixteen school districts. The jointly governed organization was formed for the purpose of aiding each

Joseph Badger Local School District
Notes to the Basic Financial Statements
For the Fiscal Year Ended June 30, 2002

participating district in establishing an effective comprehensive alcohol, tobacco and other drug prevention/intervention program that will help make schools drug free.

TSAC is governed by an executive management council made up five superintendents of the participating districts whose term rotates every year. The degree of control exercised by any participating school district is limited to its representation on the Board. Financial information can be obtained by contacting the treasurer at the Trumbull County Educational Service Center, at 347 North Park Avenue, Warren, Ohio, 44481.

E. Northeast Ohio Special Education Regional Resource Center (NEO/SERRC)

The Northeast Ohio Special Education Regional Resource Center (NEO/SERRC) is a special education service center which selects its own board, adopts its own budget and receives direct Federal and State grants for its operation. The jointly governed organization was formed for the purpose of initiating, expanding and improving special education programs and services for children with disabilities and their parents.

NEO/SERRC is governed by a governing board of 39 members made up of representatives from 35 superintendents of the participating districts, one non-public school, one county board of mental retardation and two parents whose term rotates every year. The degree of control exercised by any participating school district is limited to its representation on the Board. Financial information can be obtained by contacting the treasurer at the Mahoning County Educational Service Center, at 2801 Market Street, Youngstown, Ohio, 44507.

F. Region 12 Professional Development Center (Center)

The Region 12 Professional Development Center (Center) is a jointly governed organization among the school districts located in Trumbull, Mahoning and Columbiana Counties. The jointly governed organization was formed for the purpose of establishing an articulated, regional structure for professional development, in which school districts, the business community, higher education and other groups cooperatively plan and implement effective professional development activities that are tied directly to school improvement, and in particular, to improvements in instructional programs.

The Center is governed by a governed by a governing board made up of nineteen representatives of the participating school districts, the business community, and Youngstown State University, whose term rotates every year. The degree of control exercised by any participating school district is limited to its representation on the Board. Financial information can be obtained by contacting the treasurer at the Trumbull County Educational Service Center, at 347 North Park Avenue, Warren, Ohio, 44481.

Note 17 - Public Entity Risk Pools

A. Insurance Purchasing Pool

The School District participates in the Ohio School Boards Association Workers' Compensation Group Rating Program (GRP), an insurance purchasing pool. The GRP's business and affairs are conducted by a three member Board of directors consisting of the President, the President-Elect and the Immediate Past President of the OSBA. The Executive Director of the OSBA, or his designee, serves as coordinator of the program. Each year, the participating school districts pay an enrollment fee to the GRP to cover the costs of administering the program.

Joseph Badger Local School District
Notes to the Basic Financial Statements
For the Fiscal Year Ended June 30, 2002

B. Shared Risk Pool

The School District participates in the Trumbull County Schools Employee Insurance Benefits Consortium. It is a shared risk pool comprised of sixteen Trumbull County School Districts. The Consortium is governed by an assembly which consists of one representative from each participating school district (usually the superintendent or designee). The assembly elects officers for one year terms to serve as the Board of Directors. The assembly exercises control over the operation of the Consortium. All Consortium revenue are generated from charges for services.

Note 18 - Related Organization

The Kinsman Public Library is a distinct political subdivision of the State of Ohio created under Chapter 3375 of the Ohio Revised Code. The Library is governed by a Board of Trustees appointed by the Joseph Badger Local School District Board of Education. The Board of Trustees possesses its own contracting and budgeting authority, hires and fires personnel and does not depend on the School District for operational subsidies. Although the School District does serve as the taxing authority and may issue tax related debt on behalf of the Library, its role is limited to a ministerial function. The determination to request approval of a tax, the rate and the purpose are discretionary decisions made solely by the Board of Trustees. Financial information can be obtained from the Kinsman Public Library, Martha L. Huscroft, Clerk/Treasurer, at 6420 Church Street, Kinsman, Ohio, 44428.

Note 19 - Set-Aside Calculations

The School District is required by State statute to annually set aside in the general fund an amount based on a statutory formula for the purchase of textbooks and other instructional materials and an equal amount for the acquisition and construction of capital improvements. Amounts not spent by year-end or offset by similarly restricted resources received during the year must be held in cash at year-end and carried forward to be used for the same purposes in future years. In prior years, the School District was also required to set aside money for budget stabilization. At June 30, 2002, only the unspent portion of certain workers' compensation refunds continues to be required to be set-aside. The following cash basis information describes the change in the year-end set-aside amounts for textbooks, capital acquisition, and budget stabilization. Disclosure of this information is required by State statute.

	<u>Textbooks</u>	<u>Capital Acquisition</u>	<u>Budget Stabilization</u>
Set-aside Reserve Balance as of June 30, 2001	(\$264,976)	(226,342)	\$33,356
Current Year Set-aside Requirement	142,720	142,720	0
Reduction Authorized by Legislative Revisions	0	0	0
Qualifying Disbursements	<u>(177,904)</u>	<u>(446,426)</u>	<u>0</u>
Totals	<u>(\$300,160)</u>	<u>(\$530,048)</u>	<u>\$33,356</u>
Set-aside Balance Carried Forward to Future Fiscal Years	<u>(\$300,160)</u>	<u>(\$530,048)</u>	<u>\$33,356</u>
Set-aside Reserve Balance as of June 30, 2002	<u>\$0</u>	<u>\$0</u>	<u>\$33,356</u>

The School District had qualifying disbursements during the fiscal year that reduced the textbook set aside amount to below zero. This extra amount may be used to reduce the set-aside requirement of future years.

Joseph Badger Local School District
Notes to the Basic Financial Statements
For the Fiscal Year Ended June 30, 2002

Note 20 - Restricted Assets

Restricted assets presented in the Governmental Activities column of the Statement of Net Assets are made up of the following:

Cash and Cash Equivalents	\$179,906
Taxes Receivable	60,088
Intergovernmental Receivable	6,781
Restricted Cash	<u>33,356</u>
 Total Restricted Assets	 <u><u>\$280,131</u></u>

Note 21 – School Funding Decision

On December 11, 2002, the Ohio Supreme Court issued its latest opinion regarding the State's school funding plan. The decision reaffirmed earlier decisions that Ohio's current school-funding decision is unconstitutional.

The Supreme Court relinquished jurisdiction over the case and directed "... the Ohio General Assembly to enact a school funding scheme that is thorough and efficient..."

The School District is currently unable to determine what effect, if any, this decision will have on its future State funding and on its financial operations.

Note 22 – Subsequent Event

On November 5, 2002, the District asked voters to pass two important issues. First, a renewal of a five year emergency issue passed with 56 percent margin. This levy renewal is expected to bring approximately \$425,000 to the District annually. This was critical to our continued successful business operations. Secondly, the District asked the voters to approve a new seven mill bond issue which would allow the construction of a new pre-kindergarten through twelfth grade facility on a new 100 acre complex. The voters rejected this proposal by a 111 vote margin. The Joseph Badger Board of Education has determined that it will try again to pass this issue in February of 2003.

This page intentionally left blank.

This page intentionally left blank.

Joseph Badger Local School District

Combining Statements- Nonmajor Funds

Nonmajor Special Revenue Funds

Special Revenue Funds are established to account for revenues from specific sources (other than expendable trusts, or for major capital projects) that are legally restricted to expenditures for specific purpose. Following is a description of the School District's nonmajor special revenue funds:

Principal's Fund - This fund accounts for school site sales revenue and expenditures for field trips, assemblies, and other activity costs.

Professional Development Fund - This fund accounts for State monies used to provide seminars and workshops for staff development.

Auxiliary Services Fund - This fund accounts for funds which provide services and materials to pupils attending non-public schools within the School District.

Educational Management Information Systems Fund (EMIS) - This fund accounts for State monies which support the development of hardware and software or other costs associated with the requirements of the management information system.

District Managed Student Activity Fund - This fund accounts for gate receipts and other revenues from athletic events, all costs (except supplemental coaching contracts) of the School District's athletic program and transportation of the band to and from athletic events.

Disadvantaged Pupil Fund (DPPF)-This fund accounts for State monies received for disadvantaged pupils.

School Net Professional Development Fund - This fund accounts for monies to be used for hands on training and other technology opportunities for school administrative employees.

Summer Intervention Fund - This fund accounts for State monies used to provide summer school for those children in need of additional assistance.

Safe Schools Fund - This fund accounts for federal revenues used for a phone line for parents to call if they feel the school is threatened by outside influences.

Title VI-B Fund - This fund accounts for Federal monies used to assist schools in the identification of handicapped children, development of procedural safeguards, implementation of least restrictive alternative service patterns, and provision of full educational opportunities to handicapped children at the preschool, elementary, and secondary levels.

Title I Fund - This fund accounts for Federal monies used to assist the School District in meeting the special needs of educationally deprived children.

(continued)

Joseph Badger Local School District

Nonmajor Special Revenue Funds

(continued)

Title VI Fund - This fund accounts for Federal monies which support the implementation of a variety of programs such as computer education, gifted and talented programs, in-service and staff development.

Title VI-R Fund - This fund accounts for federal monies used to analyze classrooms within the District and helps allow the District to hire extra teachers to reduce classroom size.

Drug Free Fund – This fund accounts for federal monies used to establish, operate and improve local programs of drug abuse prevention and to engage in development, training and technical assistance.

Eisenhower Fund – This fund accounts for federal monies used to strengthen instruction in science, mathematics, modern foreign languages, English, the arts and computer learning.

Nonmajor Capital Projects Funds

Capital Projects Funds are used to account for financial resources to be used for the acquisition or construction of major capital facilities (other than those financed by proprietary funds). Following is a description of the nonmajor capital projects fund:

School Net Fund - This fund accounts for State monies used to obtain computer and related educational equipment and/or the necessary infrastructure for educational technology.

Joseph Badger Local School District
Combining Balance Sheet
Nonmajor Governmental Funds
June 30, 2002

	Nonmajor Special Revenue Funds	Nonmajor Capital Projects Fund	Total Nonmajor Governmental Funds
Assets			
Equity in Pooled Cash and Cash Equivalents	\$62,546	\$9,904	\$72,450
Intergovernmental Receivable	6,781	0	6,781
<i>Total Assets</i>	<u>\$69,327</u>	<u>\$9,904</u>	<u>\$79,231</u>
Liabilities and Fund Balances			
Liabilities			
Accrued Wages	\$18,709	\$0	\$18,709
Intergovernmental Payable	2,829	0	2,829
Deferred Revenue	6,781	0	6,781
<i>Total Liabilities</i>	<u>28,319</u>	<u>0</u>	<u>28,319</u>
Fund Balances			
Reserved for Encumbrances	2,628	0	2,628
Unreserved, Undesignated, Reported in:			
Special Revenue Funds	38,380	0	38,380
Capital Projects Funds	0	9,904	9,904
<i>Total Fund Balances</i>	<u>41,008</u>	<u>9,904</u>	<u>50,912</u>
<i>Total Liabilities and Fund Balances</i>	<u>\$69,327</u>	<u>\$9,904</u>	<u>\$79,231</u>

Joseph Badger Local School District
Combining Statement of Revenues, Expenditures and Changes in Fund Balances
Nonmajor Governmental Funds
For the Fiscal Year Ended June 30, 2002

	Nonmajor Special Revenue Funds	Nonmajor Capital Projects Fund	Total Nonmajor Governmental Funds
Revenues			
Intergovernmental	\$243,635	\$9,904	\$253,539
Extracurricular Activities	62,456	0	62,456
Contributions and Donations	3,580	0	3,580
<i>Total Revenues</i>	<u>309,671</u>	<u>9,904</u>	<u>319,575</u>
Expenditures			
Current:			
Instruction:			
Regular	54,183	0	54,183
Special	200,830	0	200,830
Support Services:			
Pupils	1,195	0	1,195
Instructional Staff	3,447	0	3,447
Administration	1,895	0	1,895
Fiscal	131	0	131
Central	5,000	0	5,000
Extracurricular Activities	67,675	0	67,675
Capital Outlay	0	18,473	18,473
<i>Total Expenditures</i>	<u>334,356</u>	<u>18,473</u>	<u>352,829</u>
<i>Net Change in Fund Balances</i>	(24,685)	(8,569)	(33,254)
<i>Fund Balances Beginning of Year</i>	<u>65,693</u>	<u>18,473</u>	<u>84,166</u>
<i>Fund Balances End of Year</i>	<u><u>\$41,008</u></u>	<u><u>\$9,904</u></u>	<u><u>\$50,912</u></u>

Joseph Badger Local School District

Combining Balance Sheet

Nonmajor Special Revenue Funds

June 30, 2002

	<u>Principal's</u>	<u>EMIS</u>	<u>District Managed Student Activity</u>
Assets			
Equity in Pooled Cash and Cash Equivalents	\$14,314	\$5,000	\$18,779
Intergovernmental Receivable	<u>0</u>	<u>0</u>	<u>0</u>
<i>Total Assets</i>	<u><u>\$14,314</u></u>	<u><u>\$5,000</u></u>	<u><u>\$18,779</u></u>
Liabilities and Fund Balances			
Liabilities			
Accrued Wages	\$0	\$0	\$0
Intergovernmental Payable	0	0	0
Deferred Revenue	<u>0</u>	<u>0</u>	<u>0</u>
<i>Total Liabilities</i>	<u>0</u>	<u>0</u>	<u>0</u>
Fund Balances			
Reserved for Encumbrances	1,286	0	381
Unreserved, Undesignated, (Deficit)	<u>13,028</u>	<u>5,000</u>	<u>18,398</u>
<i>Total Fund Equity</i>	<u>14,314</u>	<u>5,000</u>	<u>18,779</u>
<i>Total Liabilities and Fund Balances</i>	<u><u>\$14,314</u></u>	<u><u>\$5,000</u></u>	<u><u>\$18,779</u></u>

<u>School Net Professional Development</u>	<u>Summer Intervention</u>	<u>Safe Schools</u>	<u>Title I</u>	<u>Title VIR</u>
\$3,450	\$7,552	\$49	\$8,337	\$4,288
0	0	0	6,781	0
<u>\$3,450</u>	<u>\$7,552</u>	<u>\$49</u>	<u>\$15,118</u>	<u>\$4,288</u>
\$0	\$0	\$0	\$14,455	\$4,254
0	494	0	2,205	130
0	0	0	6,781	0
<u>0</u>	<u>494</u>	<u>0</u>	<u>23,441</u>	<u>4,384</u>
0	926	0	35	0
<u>3,450</u>	<u>6,132</u>	<u>49</u>	<u>(8,358)</u>	<u>(96)</u>
<u>3,450</u>	<u>7,058</u>	<u>49</u>	<u>(8,323)</u>	<u>(96)</u>
<u>\$3,450</u>	<u>\$7,552</u>	<u>\$49</u>	<u>\$15,118</u>	<u>\$4,288</u>

(continued)

Joseph Badger Local School District
Combining Balance Sheet
Nonmajor Special Revenue Funds (continued)
June 30, 2002

	<u>Eisenhower</u>	<u>Total Nonmajor Special Revenue Funds</u>
Assets		
Equity in Pooled Cash and Cash Equivalents	\$777	\$62,546
Intergovernmental Receivable	0	6,781
<i>Total Assets</i>	\$777	\$69,327
Liabilities and Fund Balances		
Liabilities		
Accrued Wages	\$0	\$18,709
Intergovernmental Payable	0	2,829
Deferred Revenue	0	6,781
<i>Total Liabilities</i>	0	28,319
Fund Balances		
Reserved for Encumbrances	0	2,628
Unreserved, Undesignated, (Deficit)	777	38,380
<i>Total Fund Equity</i>	777	41,008
Total Liabilities and Fund Balances	\$777	\$69,327

Joseph Badger Local School District
*Combining Statement of Revenues, Expenditures
and Changes in Fund Balances
Nonmajor Special Revenue Funds
For the Fiscal Year Ended June 30, 2002*

	<u>Principal's</u>	<u>Professional Development</u>	<u>Auxiliary Services</u>	<u>EMIS</u>
Revenues				
Intergovernmental	\$0	\$0	\$0	\$5,000
Interest	0	0	0	0
Extracurricular Activities	19,390	0	0	0
Contributions and Donations	0	0	0	0
<i>Total Revenues</i>	<u>19,390</u>	<u>0</u>	<u>0</u>	<u>5,000</u>
Expenditures				
Current:				
Instruction:				
Regular	0	503	0	0
Special	0	0	0	0
Support Services:				
Pupils	0	0	0	0
Instructional Staff	0	0	0	
Administration	0	0	0	0
Fiscal	0	0	131	0
Central	0	0	0	5,000
Extracurricular Activities	17,544	0	0	0
<i>Total Expenditures</i>	<u>17,544</u>	<u>503</u>	<u>131</u>	<u>5,000</u>
<i>Net Change in Fund Balances</i>	1,846	(503)	(131)	0
<i>Fund Balances Beginning of Year</i>	<u>12,468</u>	<u>503</u>	<u>131</u>	<u>5,000</u>
<i>Fund Balances (Deficit) End of Year</i>	<u>\$14,314</u>	<u>\$0</u>	<u>\$0</u>	<u>\$5,000</u>

(continued)

Joseph Badger Local School District
*Combining Statement of Revenues, Expenditures
and Changes in Fund Balances*
Nonmajor Special Revenue Funds (continued)
For the Fiscal Year Ended June 30, 2002

	District Managed Student Activity	DPPF	School Net Professional Development	Summer Intervention
Revenues				
Intergovernmental	\$0	\$10,811	\$7,592	\$0
Interest	0	0	0	0
Extracurricular Activities	43,066	0	0	0
Contributions and Donations	3,580	0	0	0
<i>Total Revenues</i>	<u>46,646</u>	<u>10,811</u>	<u>7,592</u>	<u>0</u>
Expenditures				
Current:				
Instruction:				
Regular	0	0	1,587	4,456
Special	0	10,811	0	0
Support Services:				
Pupils	0	0	0	0
Instructional Staff	0	0	3,447	0
Administration	0	0	1,895	0
Fiscal	0	0	0	0
Central	0	0	0	0
Extracurricular Activities	50,131	0	0	0
<i>Total Expenditures</i>	<u>50,131</u>	<u>10,811</u>	<u>6,929</u>	<u>4,456</u>
<i>Net Change in Fund Balances</i>	(3,485)	0	663	(4,456)
<i>Fund Balances Beginning of Year</i>	<u>22,264</u>	<u>0</u>	<u>2,787</u>	<u>11,514</u>
<i>Fund Balances (Deficit) End of Year</i>	<u>\$18,779</u>	<u>\$0</u>	<u>\$3,450</u>	<u>\$7,058</u>

Safe Schools	Title VI-B	Title I	Title VI	Title VI-R	Drug Free	Eisenhower	Total Nonmajor Special Revenue Funds
\$1,156	\$72,919	\$97,839	\$6,051	\$31,132	\$4,910	\$6,225	\$243,635
0	0	0	0	0	0	0	0
0	0	0	0	0	0	0	62,456
0	0	0	0	0	0	0	3,580
<u>1,156</u>	<u>72,919</u>	<u>97,839</u>	<u>6,051</u>	<u>31,132</u>	<u>4,910</u>	<u>6,225</u>	<u>309,671</u>
0	0	0	6,051	31,228	4,910	5,448	54,183
0	72,919	117,100	0	0	0	0	200,830
1,195	0	0	0	0	0	0	1,195
0	0	0	0	0	0	0	3,447
0	0	0	0	0	0	0	1,895
0	0	0	0	0	0	0	131
0	0	0	0	0	0	0	5,000
0	0	0	0	0	0	0	67,675
<u>1,195</u>	<u>72,919</u>	<u>117,100</u>	<u>6,051</u>	<u>31,228</u>	<u>4,910</u>	<u>5,448</u>	<u>334,356</u>
(39)	0	(19,261)	0	(96)	0	777	(24,685)
88	0	10,938	0	0	0	0	65,693
<u>\$49</u>	<u>\$0</u>	<u>(\$8,323)</u>	<u>\$0</u>	<u>(\$96)</u>	<u>\$0</u>	<u>\$777</u>	<u>\$41,008</u>

Joseph Badger Local School District
Combining Statement of Changes in Assets and Liabilities
Agency Fund
For the Fiscal Year Ended June 30, 2002

	Beginning Balance 06/30/01	Additions	Deductions	Ending Balance 06/30/02
<i>Student Managed Activities</i>				
Assets				
Equity in Pooled Cash and Cash Equivalents	\$17,347	\$46,727	\$44,300	\$19,774
Liabilities				
Due to Students	\$17,347	\$46,727	\$44,300	\$19,774

Joseph Badger Local School District
Schedule of Revenues, Expenditures and Changes
In Fund Balance - Budget (Non-GAAP Basis) and Actual
General Fund
For the Fiscal Year Ended June 30, 2002

	Budgeted Amounts		Actual	Variance With Final Budget Over (Under)
	Original	Final		
Revenues				
Taxes	\$2,950,819	\$2,710,365	\$2,710,365	\$0
Intergovernmental	4,256,629	4,769,462	4,769,462	0
Interest	100,000	82,706	82,706	0
Tuition and Fees	40,000	29,332	29,332	0
Charges for Services	3,382	303	303	0
Contributions and Donations	25,000	2,000	2,000	0
Miscellaneous	58,000	30,573	30,573	0
<i>Total Revenues</i>	<i>7,433,830</i>	<i>7,624,741</i>	<i>7,624,741</i>	<i>0</i>
Expenditures				
Current:				
Instruction:				
Regular:				
Salaries and Wages	2,747,406	2,652,745	2,652,745	0
Fringe Benefits	824,374	898,491	898,491	0
Purchased Services	44,064	34,832	34,832	0
Materials and Supplies	89,001	182,641	182,641	0
Capital Outlay - New	29,916	26,091	26,091	0
Total Regular	3,734,761	3,794,800	3,794,800	0
Special:				
Salaries and Wages	93,548	94,246	94,246	0
Fringe Benefits	22,031	21,084	21,084	0
Purchased Services	352,612	276,632	276,632	0
Materials and Supplies	5,863	5,229	5,229	0
Total Special	474,054	397,191	397,191	0
Vocational:				
Salaries and Wages	34,021	39,295	39,295	0
Fringe Benefits	14,815	17,978	17,978	0
Total Vocational	48,836	57,273	57,273	0
Total Instruction	\$4,257,651	\$4,249,264	\$4,249,264	\$0

(continued)

Joseph Badger Local School District
Schedule of Revenues, Expenditures and Changes
In Fund Balance - Budget (Non-GAAP Basis) and Actual
General Fund (continued)
For the Fiscal Year Ended June 30, 2002

	Budgeted Amounts		Actual	Variance With Final Budget Over (Under)
	Original	Final		
Support Services:				
Pupils:				
Salaries and Wages	\$204,229	\$202,384	\$202,384	\$0
Fringe Benefits	56,635	49,501	49,501	0
Purchased Services	27,687	16,011	16,011	0
Materials and Supplies	4,138	7,845	7,845	0
Total Pupils	292,689	275,741	275,741	0
Instructional Staff:				
Salaries and Wages	129,466	140,831	140,831	0
Fringe Benefits	32,668	37,843	37,843	0
Purchased Services	2,006	1,802	1,802	0
Materials and Supplies	22,165	20,250	20,250	0
Capital Outlay - New	7,515	1,093	1,093	0
Total Instructional Staff	193,820	201,819	201,819	0
Board of Education:				
Salaries and Wages	3,152	2,720	2,720	0
Fringe Benefits	702	569	569	0
Purchased Services	79,124	176,106	176,106	0
Materials and Supplies	189	349	349	0
Capital Outlay - New	3,742	0	0	0
Other	10,556	12,328	12,328	0
Total Board of Education	97,465	192,072	192,072	0
Administration:				
Salaries and Wages	610,663	583,805	583,805	0
Fringe Benefits	203,150	222,075	222,075	0
Purchased Services	57,298	45,187	45,173	14
Materials and Supplies	11,893	6,280	6,280	0
Capital Outlay - New	13,816	11,024	11,024	0
Other	64,220	76,503	76,503	0
Total Administration	961,040	944,874	944,860	14
Fiscal:				
Salaries and Wages	108,685	108,364	108,364	0
Fringe Benefits	51,042	55,134	55,134	0
Purchased Services	10,425	7,239	7,239	0
Materials and Supplies	2,076	2,867	2,867	0
Capital Outlay - New	3,000	9,121	9,121	0
Other	18,262	34,800	34,800	0
Total Fiscal	\$193,490	\$217,525	\$217,525	\$0

(continued)

Joseph Badger Local School District
Schedule of Revenues, Expenditures and Changes
In Fund Balance - Budget (Non-GAAP Basis) and Actual
General Fund (continued)
For the Fiscal Year Ended June 30, 2002

	Budgeted Amounts		Actual	Variance With Final Budget Over (Under)
	Original	Final		
Operation and Maintenance of Plant:				
Salaries and Wages	\$205,095	\$201,276	\$201,276	\$0
Fringe Benefits	111,900	121,888	121,888	0
Purchased Services	246,635	228,513	228,513	0
Materials and Supplies	41,212	45,768	45,768	0
Capital Outlay - New	16,418	2,833	2,833	0
Other	6,540	6,525	6,525	0
Total Operation and Maintenance of Plant	627,800	606,803	606,803	0
Pupil Transportation:				
Salaries and Wages	204,460	186,825	186,825	0
Fringe Benefits	118,885	133,231	133,231	0
Purchased Services	136,531	142,094	142,094	0
Materials and Supplies	74,482	71,282	71,282	0
Capital Outlay - New	116,782	103,834	103,834	0
Other	10,301	10,301	10,301	0
Total Pupil Transportation	661,441	647,567	647,567	0
Central:				
Salaries and Wages	41,835	41,675	41,675	0
Fringe Benefits	11,472	11,620	11,620	0
Purchased Services	274	12,783	12,783	0
Materials and Supplies	8,525	9,783	9,783	0
Capital Outlay - New	1,000	0	0	0
Total Central	63,106	75,861	75,861	0
Total Support Services	3,090,851	3,162,262	3,162,248	14
Extracurricular Activities:				
Academic and Subject Oriented:				
Salaries and Wages	30,910	32,270	32,270	0
Fringe Benefits	2,518	2,565	2,565	0
Total Academic and Subject Oriented	33,428	34,835	34,835	0
Sports Oriented:				
Salaries and Wages	75,854	93,606	93,606	0
Fringe Benefits	13,334	16,366	16,366	0
Total Sports Oriented	89,188	109,972	109,972	0
Total Extracurricular Activities	\$122,616	\$144,807	\$144,807	\$0

(continued)

Joseph Badger Local School District
Schedule of Revenues, Expenditures and Changes
In Fund Balance - Budget (Non-GAAP Basis) and Actual
General Fund (continued)
For the Fiscal Year Ended June 30, 2002

	<u>Budgeted Amounts</u>		<u>Actual</u>	<u>Variance With Final Budget Over (Under)</u>
	<u>Original</u>	<u>Final</u>		
Capital Outlay:				
Building Improvement Services:				
Capital Outlay - New	\$798	\$298	\$298	\$0
Site Improvement Services:				
Capital Outlay - New	694	0	0	0
Architecture and Engineering Services:				
Purchased Services	<u>15,000</u>	<u>16,246</u>	<u>16,246</u>	<u>0</u>
Total Capital Outlay	<u>16,492</u>	<u>16,544</u>	<u>16,544</u>	<u>0</u>
<i>Total Expenditures</i>	<u>7,487,610</u>	<u>7,572,877</u>	<u>7,572,863</u>	<u>14</u>
<i>Excess of Revenues Under Expenditures</i>	(53,780)	51,864	51,878	14
Other Financing Uses				
Operating Transfers Out	(26,238)	(27,183)	(27,183)	0
Special Item				
Land Purchase	<u>0</u>	<u>(399,999)</u>	<u>(399,999)</u>	<u>0</u>
<i>Net Change in Fund Balance</i>	(80,018)	(375,318)	(375,304)	14
<i>Fund Balance at Beginning of Year</i>	2,095,185	2,094,431	2,095,185	0
Prior Year Encumbrances Appropriated	<u>220,313</u>	<u>220,313</u>	<u>220,313</u>	<u>0</u>
<i>Fund Balance at End of Year</i>	<u><u>\$2,235,480</u></u>	<u><u>\$1,939,426</u></u>	<u><u>\$1,940,194</u></u>	<u><u>\$14</u></u>

Joseph Badger Local School District
Schedule of Revenues, Expenditures and Changes
In Fund Balance - Budget (Non-GAAP) and Actual
Permanent Improvement Fund
For the Fiscal Year Ended June 30, 2002

	Budgeted Amounts		Actual	Variance with
	Original	Final		Final Budget
				Over
				(Under)
Revenues				
Taxes	\$57,386	\$60,392	\$60,392	\$0
Intergovernmental	5,700	5,813	5,813	0
<i>Total Revenues</i>	63,086	66,205	66,205	0
Expenditures				
Current:				
Support Services:				
Fiscal:				
Other	112	158	158	0
Business:				
Other	876	900	900	0
Total Support Services	988	1,058	1,058	0
Capital Outlay:				
Facilities Acquisition and Construction Services:				
<i>Construction Services:</i>				
Site Improvement Services:				
Purchased Services	2,781	0	0	0
Capital Outlay - New	3,554	0	0	0
Total Site Improvement Services	6,335	0	0	0
Building Improvement Services:				
Capital Outlay - New	20,601	55,950	55,950	0
Total Capital Outlay	26,936	55,950	55,950	0

Joseph Badger Local School District
Schedule of Revenues, Expenses and Changes
In Fund Balance - Budget (Non-GAAP) and Actual
Food Service Fund
For the Fiscal Year Ended June 30, 2002

	Budgeted Amounts		Actual	Variance with Final Budget Over (Under)
	Original	Final		
Revenues				
Sales	\$216,579	\$189,313	\$189,313	\$0
Interest	850	0	0	0
Operating Grants	100,000	105,181	105,181	0
<i>Total Revenues</i>	317,429	294,494	294,494	0
Expenses				
Salaries:				
Food Service Operations	107,326	116,221	116,221	0
Fringe Benefits:				
Food Service Operations	79,167	87,010	87,010	0
Purchased Services:				
Food Service Operations	14,527	10,413	10,413	0
Materials and Supplies:				
Food Service Operations	126,142	120,088	120,088	0
Capital Outlay:				
Capital Outlay - Replacement:				
Food Service Operations	4,788	3,443	3,443	0
Other:				
Food Service Operations	750	652	652	0
<i>Total Expenses</i>	332,700	337,827	337,827	0
<i>Excess of Revenues Under Expenses</i>	(15,271)	(43,333)	(43,333)	0
Transfers In	0	27,183	27,183	0
<i>Net Change in Fund Balance</i>	(15,271)	(16,150)	(16,150)	0
<i>Fund Balance Beginning of Year</i>	16,351	16,351	16,351	0
<i>Fund Balance End of Year</i>	\$1,080	\$201	\$201	\$0

Joseph Badger Local School District
Schedule of Revenues, Expenditures and Changes
In Fund Balance - Budget (Non-GAAP) and Actual
Principal's Fund
For the Fiscal Year Ended June 30, 2002

	Budgeted Amounts		Actual	Variance with Final Budget Over (Under)
	Original	Final		
Revenues				
Extracurricular Activities	\$28,367	\$19,390	\$19,390	\$0
Expenditures				
Current:				
<i>Extracurricular Activities:</i>				
School and Public Service				
Co-Curricular Activities:				
Purchased Services	3,400	1,237	1,237	0
Materials and Supplies	17,212	17,594	17,594	0
<i>Total Expenditures</i>	20,612	18,831	18,831	0
<i>Net Change in Fund Balance</i>	7,755	559	559	0
<i>Fund Balance at Beginning of Year</i>	10,956	10,956	10,956	0
Prior Year Encumbrances Appropriated	1,512	1,512	1,512	0
<i>Fund Balance at End of Year</i>	\$20,223	\$13,027	\$13,027	\$0

Joseph Badger Local School District
Schedule of Revenues, Expenditures and Changes
In Fund Balance - Budget (Non-GAAP) and Actual
Professional Development Fund
For the Fiscal Year Ended June 30, 2002

	<u>Budgeted Amounts</u>		<u>Actual</u>	Variance with
	<u>Original</u>	<u>Final</u>		Final Budget Over (Under)
Revenues				
Intergovernmental	<u>\$6,000</u>	<u>\$0</u>	<u>\$0</u>	<u>\$0</u>
Expenditures				
Current:				
<i>Instruction:</i>				
Regular:				
Purchased Services	503	503	503	0
<i>Support Services:</i>				
Instructional Staff:				
Purchased Services	<u>6,200</u>	<u>0</u>	<u>0</u>	<u>0</u>
<i>Total Expenditures</i>	<u>6,703</u>	<u>503</u>	<u>503</u>	<u>0</u>
<i>Net Change in Fund Balance</i>	(703)	(503)	(503)	0
<i>Fund Balance at Beginning of Year</i>	<u>503</u>	<u>503</u>	<u>503</u>	<u>0</u>
<i>Fund Balance(Deficit) at End of Year</i>	<u>(\$200)</u>	<u>\$0</u>	<u>\$0</u>	<u>\$0</u>

Joseph Badger Local School District
Schedule of Revenues, Expenditures and Changes
In Fund Balance - Budget (Non-GAAP) and Actual
Auxiliary Services Fund
For the Fiscal Year Ended June 30, 2002

	Budgeted Amounts		Actual	Variance with
	Original	Final		Final Budget Over (Under)
Revenues				
<i>Total Revenues</i>	\$0	\$0	\$0	\$0
Expenditures				
Current:				
<i>Support Services:</i>				
Fiscal:				
Fringe Benefits	0	131	131	0
<i>Net Change in Fund Balance</i>	0	(131)	(131)	0
<i>Fund Balance at Beginning of Year</i>	131	131	131	0
<i>Fund Balance at End of Year</i>	\$131	\$0	\$0	\$0

Joseph Badger Local School District
Schedule of Revenues, Expenditures and Changes
In Fund Balance - Budget (Non-GAAP) and Actual
Educational Management Information Systems Fund (EMIS)
For the Fiscal Year Ended June 30, 2002

	Budgeted Amounts		Actual	Variance with Final Budget Over (Under)
	Original	Final		
Revenues				
Intergovernmental	\$5,000	\$5,000	\$5,000	\$0
Expenditures				
Central:				
Purchased Services	10,000	5,000	5,000	0
<i>Net Change in Fund Balance</i>	(5,000)	0	0	0
<i>Fund Balance at Beginning of Year</i>	5,000	5,000	5,000	0
<i>Fund Balance at End of Year</i>	\$0	\$5,000	\$5,000	\$0

Joseph Badger Local School District
Schedule of Revenues, Expenditures and Changes
In Fund Balance - Budget (Non-GAAP) and Actual
District Managed Student Activity Fund
For the Fiscal Year Ended June 30, 2002

	Budgeted Amounts		Actual	Variance with Final Budget Over (Under)
	Original	Final		
Revenues				
Extracurricular Activities	\$52,116	\$43,066	\$43,066	\$0
Contributions and Donations	5,000	3,580	3,580	0
<i>Total Revenues</i>	57,116	46,646	46,646	0
Expenditures				
Current:				
<i>Extracurricular Activities:</i>				
Academic and Subject Oriented				
Activities:				
Purchased Services	1,300	1,162	1,162	0
Materials and Supplies	6,815	6,891	6,891	0
<i>Total Academic and Subject Oriented Activities</i>	8,115	8,053	8,053	0
Sports Oriented Activities:				
Purchased Services	22,785	19,195	19,195	0
Materials and Supplies	17,011	16,136	16,136	0
Capital Outlay - New	3,400	2,400	2,400	0
<i>Total Sports Oriented Activities</i>	43,196	37,731	37,731	0
<i>Total Expenditures</i>	51,311	45,784	45,784	0
<i>Net Change in Fund Balance</i>	5,805	862	862	0
<i>Fund Balance at Beginning of Year</i>	14,736	14,736	14,736	0
Prior Year Encumbrances Appropriated	2,525	2,525	2,525	0
<i>Fund Balance at End of Year</i>	\$23,066	\$18,123	\$18,123	\$0

Joseph Badger Local School District
Schedule of Revenues, Expenditures and Changes
In Fund Balance - Budget (Non-GAAP) and Actual
Disadvantaged Pupil Fund
For the Fiscal Year Ended June 30, 2002

	Budgeted Amounts		Actual	Variance with
	Original	Final		Final Budget
				Over
				(Under)
Revenues				
Intergovernmental	\$10,000	\$10,811	\$10,811	\$0
Expenditures				
Current:				
Special Instruction:				
Purchased Services	0	10,811	10,811	0
<i>Net Change in Fund Balance</i>	10,000	0	0	0
<i>Fund Balance at Beginning of Year</i>	0	0	0	0
<i>Fund Balance at End of Year</i>	<u>\$10,000</u>	<u>\$0</u>	<u>\$0</u>	<u>\$0</u>

Joseph Badger Local School District
Schedule of Revenues, Expenditures and Changes
In Fund Balance - Budget (Non-GAAP) and Actual
School Net Professional Development Fund
For the Fiscal Year Ended June 30, 2002

	<u>Budgeted Amounts</u>		<u>Actual</u>	Variance with
	<u>Original</u>	<u>Final</u>		Final Budget Over (Under)
Revenues				
Intergovernmental	\$3,000	\$7,592	\$7,592	\$0
Expenditures				
Current:				
<i>Instruction:</i>				
Regular:				
Purchased Services	1,587	1,587	1,587	0
Instructional Staff:				
Purchased Services	3,447	3,447	3,447	0
Administration:				
Purchased Services	1,895	1,895	1,895	0
<i>Total Expenditures</i>	<u>6,929</u>	<u>6,929</u>	<u>6,929</u>	<u>0</u>
<i>Net Change in Fund Balance</i>	(3,929)	663	663	0
<i>Fund Balance at Beginning of Year</i>	<u>2,787</u>	<u>2,787</u>	<u>2,787</u>	<u>0</u>
<i>Fund Balance(Deficit) at End of Year</i>	<u><u>(\$1,142)</u></u>	<u><u>\$3,450</u></u>	<u><u>\$3,450</u></u>	<u><u>\$0</u></u>

Joseph Badger Local School District
Schedule of Revenues, Expenditures and Changes
In Fund Balance - Budget (Non-GAAP) and Actual
Summer Intervention Fund
For the Fiscal Year Ended June 30, 2002

	<u>Budgeted Amounts</u>		<u>Actual</u>	Variance with
	<u>Original</u>	<u>Final</u>		Final Budget Over (Under)
Revenues				
Intergovernmental	\$8,000	\$0	\$0	\$0
Expenditures				
Current:				
<i>Instruction:</i>				
Regular:				
Salaries and Wages	3,000	0	0	0
Materials and Supplies	0	1,713	1,713	0
Capital Outlay - New	6,000	3,175	3,175	0
Total Instruction	9,000	4,888	4,888	0
<i>Support Services:</i>				
Pupils:				
Salaries and Wages	1,000	0	0	0
<i>Total Expenditures</i>	10,000	4,888	4,888	0
<i>Net Change in Fund Balance</i>	(2,000)	(4,888)	(4,888)	0
<i>Fund Balance at Beginning of Year</i>	11,514	11,514	11,514	0
<i>Fund Balance at End of Year</i>	\$9,514	\$6,626	\$6,626	\$0

Joseph Badger Local School District
Schedule of Revenues, Expenditures and Changes
In Fund Balance - Budget (Non-GAAP) and Actual
Safe Schools Fund
For the Fiscal Year Ended June 30, 2002

	<u>Budgeted Amounts</u>		<u>Actual</u>	Variance with
	<u>Original</u>	<u>Final</u>		Final Budget Over (Under)
Revenues				
Intergovernmental	\$1,200	\$1,156	\$1,156	\$0
Expenditures				
Current:				
<i>Support Services:</i>				
Pupils:				
Purchased Services	<u>1,195</u>	<u>1,195</u>	<u>1,195</u>	<u>0</u>
<i>Net Change in Fund Balance</i>	5	(39)	(39)	0
<i>Fund Balance at Beginning of Year</i>	<u>87</u>	<u>87</u>	<u>87</u>	<u>0</u>
<i>Fund Balance at End of Year</i>	<u><u>\$92</u></u>	<u><u>\$48</u></u>	<u><u>\$48</u></u>	<u><u>\$0</u></u>

Joseph Badger Local School District
Schedule of Revenues, Expenditures and Changes
In Fund Balance - Budget (Non-GAAP) and Actual
Title VI-B Fund
For the Fiscal Year Ended June 30, 2002

	<u>Budgeted Amounts</u>		<u>Actual</u>	Variance with
	<u>Original</u>	<u>Final</u>		Final Budget Over (Under)
Revenues				
Intergovernmental	\$54,000	\$72,919	\$72,919	\$0
Expenditures				
Current:				
<i>Instruction:</i>				
Special:				
Purchased Services	<u>72,919</u>	<u>72,919</u>	<u>72,919</u>	<u>0</u>
<i>Net Change in Fund Balance</i>	(18,919)	0	0	0
<i>Fund Balance at Beginning of Year</i>	<u>0</u>	<u>0</u>	<u>0</u>	<u>0</u>
<i>Fund Balance (Deficit) at End of Year</i>	<u><u>(\$18,919)</u></u>	<u><u>\$0</u></u>	<u><u>\$0</u></u>	<u><u>\$0</u></u>

Joseph Badger Local School District
Schedule of Revenues, Expenditures and Changes
In Fund Balance - Budget (Non-GAAP) and Actual
Title I Fund
For the Fiscal Year Ended June 30, 2002

	Budgeted Amounts		Actual	Variance with Final Budget Over (Under)
	Original	Final		
Revenues				
Intergovernmental	\$96,877	\$97,839	\$97,839	\$0
Expenditures				
Current:				
<i>Instruction:</i>				
Special:				
Salaries and Wages	73,620	82,860	82,860	0
Fringe Benefits	25,000	29,470	29,470	0
Purchased Services	0	0	0	0
Materials and Supplies	2,863	3,366	3,366	0
Capital Outlay - New	4,000	0	0	0
<i>Total Expenditures</i>	105,483	115,696	115,696	0
<i>Net Change in Fund Balance</i>	(8,606)	(17,857)	(17,857)	0
<i>Fund Balance at Beginning of Year</i>	25,296	25,296	25,296	0
Prior Year Encumbrances Appropriated	863	863	863	0
<i>Fund Balance at End of Year</i>	\$17,553	\$8,302	\$8,302	\$0

Joseph Badger Local School District
Schedule of Revenues, Expenditures and Changes
In Fund Balance - Budget (Non-GAAP) and Actual
Title VI Fund
For the Fiscal Year Ended June 30, 2002

	<u>Budgeted Amounts</u>		<u>Actual</u>	Variance with
	<u>Original</u>	<u>Final</u>		Final Budget Over (Under)
Revenues				
Intergovernmental	\$6,500	\$6,051	\$6,051	\$0
Expenditures				
Current:				
<i>Instruction:</i>				
Regular:				
Purchased Services	0	0	0	0
Capital Outlay - New	6,471	6,051	6,051	0
<i>Total Expenditures</i>	6,471	6,051	6,051	0
<i>Net Change in Fund Balance</i>	29	0	0	0
<i>Fund Balance at Beginning of Year</i>	0	0	0	0
<i>Fund Balance at End of Year</i>	\$29	\$0	\$0	\$0

Joseph Badger Local School District
Schedule of Revenues, Expenditures and Changes
In Fund Balance - Budget (Non-GAAP) and Actual
Title VI-R Fund
For the Fiscal Year Ended June 30, 2002

	<u>Budgeted Amounts</u>		<u>Actual</u>	Variance with
	<u>Original</u>	<u>Final</u>		Final Budget Over (Under)
Revenues				
Intergovernmental	\$24,000	\$31,132	\$31,132	\$0
Expenditures				
Current:				
<i>Instruction:</i>				
Regular:				
Salaries and Wages	27,654	22,981	22,981	0
Fringe Benefits	3,847	3,863	3,863	0
<i>Total Expenditures</i>	31,501	26,844	26,844	0
<i>Net Change in Fund Balance</i>	(7,501)	4,288	4,288	0
<i>Fund Balance at Beginning of Year</i>	0	0	0	0
<i>Fund Balance (Deficit) at End of Year</i>	(\$7,501)	\$4,288	\$4,288	\$0

Joseph Badger Local School District
Schedule of Revenues, Expenditures and Changes
In Fund Balance - Budget (Non-GAAP) and Actual
Drug Free Fund
For the Fiscal Year Ended June 30, 2002

	<u>Budgeted Amounts</u>		<u>Actual</u>	Variance with
	<u>Original</u>	<u>Final</u>		Final Budget Over (Under)
Revenues				
Intergovernmental	\$5,000	\$4,910	\$4,910	\$0
Expenditures				
Current:				
<i>Instruction:</i>				
Regular:				
Purchased Services	<u>4,910</u>	<u>4,910</u>	<u>4,910</u>	<u>0</u>
<i>Net Change in Fund Balance</i>	90	0	0	0
<i>Fund Balance at Beginning of Year</i>	<u>0</u>	<u>0</u>	<u>0</u>	<u>0</u>
<i>Fund Balance at End of Year</i>	<u><u>\$90</u></u>	<u><u>\$0</u></u>	<u><u>\$0</u></u>	<u><u>\$0</u></u>

Joseph Badger Local School District
Schedule of Revenues, Expenditures and Changes
In Fund Balance - Budget (Non-GAAP) and Actual
Eisenhower Fund
For the Fiscal Year Ended June 30, 2002

	<u>Budgeted Amounts</u>		<u>Actual</u>	Variance with
	<u>Original</u>	<u>Final</u>		Final Budget Over (Under)
Revenues				
Intergovernmental	\$5,000	\$6,225	\$6,225	\$0
Expenditures				
Current:				
<i>Instruction:</i>				
Regular:				
Purchased Services	<u>6,431</u>	<u>5,448</u>	<u>5,448</u>	<u>0</u>
<i>Net Change in Fund Balance</i>	(1,431)	777	777	0
<i>Fund Balance at Beginning of Year</i>	<u>0</u>	<u>0</u>	<u>0</u>	<u>0</u>
<i>Fund Balance(Deficit) at End of Year</i>	<u><u>(\$1,431)</u></u>	<u><u>\$777</u></u>	<u><u>\$777</u></u>	<u><u>\$0</u></u>

Joseph Badger Local School District
Schedule of Revenues, Expenditures and Changes
In Fund Balance - Budget (Non-GAAP) and Actual
School Net Fund
For the Fiscal Year Ended June 30, 2002

	Budgeted Amounts		Actual	Variance with Final Budget Over (Under)
	Original	Final		
Revenues				
Intergovernmental	\$50,000	\$9,904	\$9,904	\$0
Expenditures				
Current:				
<i>Instruction:</i>				
Regular:				
Materials and Supplies	1,744	1,744	1,744	0
Capital Outlay - New	4,729	4,729	4,729	0
<i>Total Instruction</i>	6,473	6,473	6,473	0
<i>Support Services:</i>				
Central:				
Capital Outlay - New	24,000	12,000	12,000	0
<i>Total Expenditures</i>	30,473	18,473	18,473	0
<i>Net Change in Fund Balance</i>	19,527	(8,569)	(8,569)	0
<i>Fund Balance at Beginning of Year</i>	6,473	6,473	6,473	0
Prior Year Encumbrances Appropriated	12,000	12,000	12,000	0
<i>Fund Balance at End of Year</i>	\$38,000	\$9,904	\$9,904	\$0

Joseph Badger Local School District
Schedule of Revenues, Expenses and Changes
In Fund Equity - Budget (Non-GAAP) and Actual
Scholarship Trust Fund
For the Fiscal Year Ended June 30, 2002

	<u>Budgeted Amounts</u>		<u>Actual</u>	Variance with
	<u>Original</u>	<u>Final</u>		Final Budget Over (Under)
Revenues				
Interest	\$956	\$418	\$418	\$0
Expenses				
Other:				
Community Services	<u>800</u>	<u>927</u>	<u>927</u>	<u>0</u>
<i>Net Change in Fund Equity</i>	156	(509)	(509)	0
<i>Fund Balance Beginning of Year</i>	<u>15,873</u>	<u>15,873</u>	<u>15,873</u>	<u>0</u>
<i>Fund Balance End of Year</i>	<u><u>\$16,029</u></u>	<u><u>\$15,364</u></u>	<u><u>\$15,364</u></u>	<u><u>\$0</u></u>

This page intentionally left blank.

Joseph Badger Local School District
Governmental Activities
Revenues by Source and Expenses by Function(1)
Last Three Fiscal Years(2)

	2002	2001	2000
	Full	Full	Full
	Accrual	Accrual	Accrual
Program Revenues			
Charges for Services	\$86,606	\$83,505	\$53,581
Operating Grants and Contributions	269,385	295,623	302,526
Capital Grants and Contributions	2,000	79,807	32,851
General Revenues			
Taxes	2,760,963	2,556,186	2,632,853
Intergovernmental	4,775,137	4,300,266	4,133,565
Interest	78,565	159,079	145,316
Tuition and Fees	0	0	0
Extracurricular Activities	0	0	0
Charges for Services	0	0	0
Gifts and Donations	0	0	0
Miscellaneous	30,573	38,506	55,765
<i>Total</i>	<u>\$8,003,229</u>	<u>\$7,512,972</u>	<u>\$7,356,457</u>
Expenses			
Instruction:			
Regular	\$3,792,508	\$3,578,852	\$3,369,166
Special	602,471	587,040	371,262
Vocational	58,150	50,628	51,646
Support Services:			
Pupils	269,551	264,410	252,287
Instructional Staff	207,527	168,253	122,148
Board of Education	180,336	136,730	73,278
Administration	981,924	764,260	663,633
Fiscal	189,586	235,506	162,282
Business	2,263	0	13,312
Operation and			
Maintenance of Plant	698,596	606,097	542,027
Pupil Transportation	629,915	581,336	534,694
Central	81,144	58,765	59,176
Operation of Non-			
Instructional Services	0	384	5,917
Extracurricular Activities	212,423	178,163	164,067
Interest	0	604	2,054
<i>Total</i>	<u>\$7,906,394</u>	<u>\$7,211,028</u>	<u>\$6,386,949</u>

Source: School District Financial Records

Joseph Badger Local School District
General Governmental
Revenues by Source and Expenditures by Function(1)
Last Ten Fiscal Years(2)

	2002	2001	2000	1999
Revenues				
Taxes	\$2,765,343	\$2,662,042	\$2,508,773	\$2,241,953
Intergovernmental	5,028,676	4,682,584	4,399,456	3,890,414
Interest	78,565	159,079	145,316	109,592
Tuition and Fees	29,332	30,594	23,142	22,561
Extracurricular Activities	62,456	60,198	47,629	0
Charges for Services	303	1,455	7,935	4,144
Gifts and Donations	5,580	9,370	31,361	1,693
Miscellaneous	30,573	38,506	55,765	1,163
<i>Total</i>	<u>\$8,000,828</u>	<u>\$7,643,828</u>	<u>\$7,219,377</u>	<u>\$6,271,520</u>
Expenditures				
Current:				
Instruction:				
Regular	\$3,819,281	\$3,566,085	\$3,415,766	\$3,083,849
Special	576,124	584,370	375,925	480,366
Vocational	57,887	50,628	51,646	38,677
Adult/Continuing	0	0	0	298
Other	0	0	0	0
Support Services:				
Pupils	268,240	264,151	252,029	189,608
Instructional Staff	206,845	171,924	117,031	116,663
Board of Education	175,876	136,730	73,278	93,661
Administration	954,362	756,221	690,388	658,573
Fiscal	190,276	246,416	165,827	158,635
Business	2,263	0	13,312	0
Operation and				
Maintenance of Plant	596,697	582,599	512,193	496,086
Pupil Transportation	648,736	511,125	687,102	429,756
Central	80,396	65,241	59,134	32,632
Operation of Non-				
Instructional Services	0	0	5,642	0
Extracurricular Activities	211,537	177,866	162,593	108,433
Capital Outlay	72,888	434,249	110,140	3,914
Debt Service	0	20,725	22,175	0
<i>Total</i>	<u>\$7,861,408</u>	<u>\$7,568,330</u>	<u>\$6,714,181</u>	<u>\$5,891,150</u>

Source: School District Financial Records

(1) Includes General, Special Revenue, Capital Projects and Debt Service Funds

(2) 1995 through 1993 reported on a Cash Basis; All others on Modified Accrual Basis.

1998	1997	1996	1995 (2)	1994 (2)	1993 (2)
\$2,245,706	\$2,199,996	\$2,141,869	\$1,858,151	\$1,524,755	\$1,564,774
3,577,581	3,411,258	3,312,296	2,877,040	2,867,342	2,821,664
106,023	89,767	61,823	48,112	29,016	23,247
20,655	12,155	2,428	14,351	4,523	4,957
0	0	0	0	0	0
463	462	238	0	0	0
460	740	1,435	0	0	0
33,634	10	7,979	15,349	20,066	3,210
<u>\$5,984,522</u>	<u>\$5,714,388</u>	<u>\$5,528,067</u>	<u>\$4,813,003</u>	<u>\$4,445,702</u>	<u>\$4,417,852</u>
\$3,191,030	\$2,999,696	\$2,771,499	\$2,400,699	\$2,364,623	\$2,450,417
213,896	241,043	173,832	163,499	220,937	116,002
114,210	113,268	114,914	118,006	145,201	147,624
862	0	0	0	0	0
0	0	0	5,227	1,842	5,409
121,543	137,951	119,497	109,520	86,300	73,892
101,547	99,117	89,944	106,099	106,174	69,107
22,540	32,697	107,051	16,272	20,097	15,724
609,947	606,953	572,405	578,787	519,603	457,654
128,076	120,882	110,785	105,003	100,465	100,403
0	2,592	0	0	0	0
490,689	538,129	444,897	436,773	427,624	426,682
506,864	614,100	430,925	487,035	436,586	424,261
33,625	18,769	0	0	0	71,494
0	0	0	0	0	0
95,730	90,412	85,666	74,508	72,540	65,302
0	0	330	875	185	250
0	0	3,998	0	0	0
<u>\$5,630,558</u>	<u>\$5,615,609</u>	<u>\$5,025,743</u>	<u>\$4,602,303</u>	<u>\$4,502,177</u>	<u>\$4,424,221</u>

Joseph Badger Local School District
Property Tax Levies and Collections
Last Eight Calendar Years (1)

Year (2)	Total Tax Levy	Current Collections	Percent of Current Taxes Collected	Delinquent Collections	Total Collections	Total Tax Collections As a Percent of Current Levy	Outstanding Delinquent Taxes (3)	Percent of Outstanding Delinquent Taxes To Total Tax Levy
2001	\$3,016,427	\$2,904,513	96.29%	\$121,474	\$3,025,987	100.32%	\$198,400	6.58%
2000	2,926,898	2,834,162	96.83	70,844	2,905,006	99.25	195,059	6.66
1999	2,598,515	2,553,491	98.27	90,952	2,644,443	101.77	173,009	6.66
1998	2,523,387	2,463,731	97.64	80,130	2,543,861	100.81	180,377	7.15
1997	2,503,458	2,441,668	97.53	135,535	2,577,203	102.95	212,682	8.50
1996	2,448,537	2,372,321	96.89	93,700	2,466,021	100.71	240,382	9.82
1995	2,427,226	2,338,370	96.34	75,028	2,413,398	99.43	190,762	7.86
1994	1,861,318	1,785,659	95.94	115,739	1,901,398	102.15	189,840	10.20

Source: Trumbull County Auditor - Data is presented on a calendar year basis because this is the manner in which the information is maintained by the County Auditor.

- (1) Information was not available prior to 1994.
- (2) Represents collection year. 2002 information cannot be presented because all collections have not been made by June 30.
- (3) This amount cannot be calculated based on other information in this statistical table because of retroactive additions and reductions which are brought on in one lump sum.

Joseph Badger Local School District
Assessed and Estimated Actual Value of Taxable Property
Last Ten Calendar Years

Year	Real Property		Public Utility Property		Tangible Personal Property		Total		
	Assessed Value	Estimated Actual Value (1)	Assessed Value	Estimated Actual Value (1)	Assessed Value	Estimated Actual Value (1)	Assessed Value	Estimated Actual Value (1)	
2002	\$79,432,970	\$226,951,343	\$4,712,220	\$5,354,795	\$8,971,486	\$35,885,944	\$93,116,676	\$268,192,082	35%
2001	77,973,410	222,781,171	5,726,310	6,507,170	7,890,532	31,562,128	91,590,252	260,850,469	35
2000	76,319,190	218,054,829	6,930,500	7,875,568	6,509,919	26,039,676	89,759,609	251,970,073	36
1999	58,327,417	166,649,763	6,496,850	7,382,784	5,292,262	21,169,048	70,116,529	195,201,595	36
1998	57,765,271	165,043,631	6,681,770	7,592,920	5,174,311	20,697,244	69,621,352	193,333,796	36
1997	57,087,115	163,106,043	6,784,250	7,709,375	4,651,406	18,605,624	68,522,771	189,421,042	36
1996	51,706,717	147,733,477	6,905,330	7,846,966	4,397,059	17,588,236	63,009,106	173,168,679	36
1995	51,036,902	145,819,720	7,192,750	8,173,580	4,145,467	16,581,868	62,375,119	170,575,168	37
1994	50,240,150	143,543,286	7,508,140	8,531,977	4,145,467	16,581,868	61,893,757	168,657,131	37
1993	44,566,232	127,332,091	7,470,750	8,489,489	4,387,205	17,548,820	56,424,187	153,370,400	37

Source: Trumbull County Auditor - Data is presented on a calendar year basis because that is the manner in which the information is maintained

(1) Assessed estimated true value is calculated by dividing the assessed value by the assessment percentage.

The percentages used in the calculation are as follows:

Real Property - 35 percent

Public Utility Tangible - 88 percent

Tangible Personal Property - 25 percent of actual value for 1995 through 2002

Joseph Badger Local School District

*Property Tax Rates - Direct and Overlapping Governments
(per \$1,000 Assessed Valuation)*

Last Ten Calendar Years

Year	School Levy	County Levy	Gustavus Township Levy	Hartford Township Levy	Kinsman Township Levy	Vernon Township Levy	Orangeville Village	JVS Levy	Debt Service			
									School	County	Townships	Total
2002	\$38.30	\$10.35	\$12.20	\$5.80	\$14.00	\$7.70	\$14.30	\$2.40	\$0.00	\$0.00	\$0.00	\$0.00
2001	38.40	10.35	12.20	5.80	14.00	7.70	14.30	2.40	0.00	0.00	0.00	0.00
2000	38.41	10.35	9.20	5.80	14.00	7.70	14.30	2.40	0.00	0.00	0.00	0.00
1999	41.58	9.30	9.20	5.80	14.00	7.70	N/A	2.40	0.00	0.00	0.00	0.00
1998	35.25	9.30	9.20	5.80	14.00	7.70	N/A	2.40	0.36	0.00	0.00	0.36
1997	35.27	9.30	9.20	5.80	14.00	6.20	N/A	2.40	0.20	0.00	0.00	0.20
1996	37.39	9.30	9.20	5.80	13.00	6.20	N/A	2.40	0.50	0.00	0.00	0.50
1995	37.62	9.30	9.20	7.80	13.00	6.20	N/A	2.40	0.60	0.00	0.00	0.60
1994	40.00	9.30	6.20	7.80	13.00	6.20	N/A	2.40	0.00	0.00	0.00	0.00
1993	40.00	9.30	6.20	7.80	13.00	6.20	N/A	2.40	0.00	0.00	0.00	0.00

Source: Trumbull County Auditor - Data is presented on a calendar year basis because that is the manner in which the information is maintained
N/A: Information was not available

Joseph Badger Local School District

Ratio of Net General Obligation Bonded Debt to Assessed

Value and Net Bonded Debt Per Capita

Last Ten Years

<u>Year</u>	<u>General Obligation Bonded Debt (1)</u>	<u>Assessed Value</u>	<u>Population (2)</u>	<u>Ratio of Debt to Assessed Value</u>	<u>Net Debt Per Capita</u>
2002	\$0	\$93,116,676	7,066	0.00%	\$0.00
2001	20,000	91,590,252	7,066	0.02	2.83
2000	22,175	89,759,609	7,066	0.02	3.14
1999	23,625	70,116,529	7,066	0.03	3.34
1998	25,075	69,621,352	6,977	0.04	3.59
1997	26,525	68,522,771	6,977	0.04	3.80
1996	33,156	63,009,106	6,977	0.05	4.75
1995	34,969	62,375,119	6,977	0.06	5.01
1994	36,781	61,893,757	6,977	0.06	5.27
1993	64,219	56,424,187	6,977	0.11	9.20

Source: Trumbull County Auditor and School District Financial Records

(1) Represents general obligation bonds payable from property taxes.

(2) Estimate provided by State Census Bureau.

Joseph Badger Local School District
Computation of Legal Debt Margin
June 30, 2002

Assessed Valuation	<u>\$93,116,676</u>
Overall Debt Limit - 9% of Assessed Value (1)	\$8,380,501
Amount of Debt Applicable to Debt Limit	<u>0</u>
<i>Overall Debt Margin</i>	<u>\$8,380,501</u>
Unvoted Debt Limit - .10% of Assessed Value (1)	\$93,117
Amount of Debt Applicable	<u>0</u>
<i>Unvoted Debt Margin</i>	<u>\$93,117</u>

Source: Trumbull County Auditor and School District Financial Records

(1) Ohio Bond Law sets an overall limit of 9% for all debt
and 1/10 of 1% for unvoted debt.

Joseph Badger Local School District
Computation of Direct and Overlapping General Obligation Bonded Debt
December 31, 2001

Jurisdiction	General Obligation Debt Outstanding (1)	Percentage Applicable to School District (2)	Amount Applicable to School District
Direct:			
Joseph Badger Local School District	\$0	100.00%	\$0
Overlapping:			
Trumbull County	14,173,619	3.00	425,209
Gustavus Township	0	100.00	0
Hartford Township	0	100.00	0
Kinsman Township	0	100.00	0
Vernon Township	0	100.00	0
Orangeville Village	<u>0</u>	100.00	<u>0</u>
Total Overlapping	<u>14,173,619</u>		<u>425,209</u>
Total	<u><u>\$14,173,619</u></u>		<u><u>\$425,209</u></u>

(1) Represents general obligation bonds payable from property taxes.

(2) Percentages were determined by dividing the assessed valuation of the political subdivision located within the boundaries of the School District by the total assessed valuation of the subdivision. The valuations used were for the 2002 collection year.

Joseph Badger Local School District
Ratio of Annual Debt Service Expenditures For
General Obligation Bonded Debt to Total General Governmental Expenditures
Last Ten Fiscal Years

Year	Principal	Interest	Total Debt Service (1)	Total General Governmental Expenditures	Ratio of Debt Service to Governmental Fund Expenditures (Percentage)
2002	\$0	\$0	\$0	\$7,861,408	0.00%
2001	20,000	725	20,725	7,568,330	0.27
2000	20,000	2,175	22,175	6,714,181	0.33
1999	20,000	3,625	23,625	5,891,150	0.40
1998	20,000	5,075	25,075	5,630,558	0.45
1997	20,000	6,525	26,525	5,615,609	0.47
1996	25,000	8,156	33,156	5,025,743	0.66
1995	25,000	9,969	34,969	4,602,303	0.76
1994	25,000	11,781	36,781	4,502,177	0.82
1993	50,000	14,219	64,219	4,424,221	1.45

Source: School District Financial Records

Joseph Badger Local School District

Demographic Statistics

Last Ten Years

Year	Trumbull County Population (1)	Gustavus Township Population (2)	Hartford Township Population (2)	Kinsman Township Population (2)	Vernon Township Population (2)	School Enrollment (3)	Unemployment Rate (4)
2002	225,116	1,044	2,184	2,126	1,712	1,202	5.1%
2001	225,116	1,044	2,184	2,126	1,712	1,191	5.1
2000	225,338	1,044	2,184	2,126	1,712	1,148	5.2
1999	227,069	1,044	2,184	2,126	1,712	1,104	5.5
1998	228,417	1,031	2,157	2,099	1,690	1,104	5.9
1997	228,417	1,031	2,157	2,099	1,690	1,107	5.8
1996	229,805	1,031	2,157	2,099	1,690	1,138	6.1
1995	229,805	1,031	2,157	2,099	1,690	N/A	7.2
1994	229,805	1,031	2,157	2,099	1,690	N/A	8.2
1993	229,805	1,031	2,157	2,099	1,690	N/A	9.8
(1)	Trumbull County Planning Commission						
(2)	Estimate provided by the State Census Bureau						
(3)	School District Financial Records						
(4)	Represents Trumbull County						

Joseph Badger Local School District
Property Value and Financial Institution Deposits
Last Ten Years

Year	Property Value (Real Estate Only) (1)	Financial Institution Deposits Banks (2)
2001	\$79,432,970	\$146,731,300
2000	77,973,410	136,630,100
1999	76,319,190	156,658,200
1998	58,327,417	157,324,600
1997	57,765,271	154,597,700
1996	57,087,115	111,942,800
1995	51,706,717	149,499,000
1994	51,036,902	125,417,000
1993	50,240,150	111,817,000
1992	44,566,232	99,003,000

Source: Ohio Bureau of Employment Services
 Federal Reserve Bank of Cleveland

(1) Represents assessed value.

(2) Represents all banks headquartered in Trumbull County.

Joseph Badger Local School District

Principal Taxpayers

Real Estate Tax

December 31, 2001

<u>Name of Taxpayer</u>	<u>Assessed Value (1)</u>	<u>Percent of Total Assessed Value</u>
Target Stamped Product	\$771,590	0.97%
Richard B. Thompson	543,560	0.69
Massassauga Rattlesnake	459,950	0.58
W I Miller & Sons	333,180	0.42
National Dairy Products	317,140	0.40
Stanwade Metal Products	312,380	0.39
O'Brien, Michael J.	281,620	0.36
Harnett, David L.	278,800	0.35
Kepner, Nancy M.	255,030	0.32
Logan, Arlene B.	<u>242,160</u>	<u>0.30</u>
Total	<u>\$3,795,410</u>	<u>4.78%</u>
Total Real Estate Valuation	<u>\$79,432,970</u>	

Source: Trumbull County Auditor

(1) Assessed values are for the 2002 collection year.

Joseph Badger Local School District

Principal Taxpayers

Tangible Personal Property Tax

December 31, 2001

<u>Name of Taxpayer</u>	<u>Assessed Value (1)</u>	<u>Percent of Total Assessed Value</u>
Kraft Foods, Inc.	\$2,363,620	26.35%
Target Stamped Products	2,303,220	25.67
Terry Harmon Motors	583,690	6.51
Stanwade Metal Products	457,880	5.11
Palmer Donavin Manufacturing Co.	433,100	4.83
A G Birrell Co.	238,930	2.66
Kinsman Supply and Rental	135,540	1.51
Cope Farm Equipment	130,270	1.45
Horodyski Brothers Co.	112,414	1.25
Kinsman Land Company	<u>105,090</u>	<u>1.17</u>
Total	<u>\$6,863,754</u>	<u>76.51%</u>
Total Assessed Value	<u>\$8,971,486</u>	

Source: Trumbull County Auditor

(1) Assessed values are for the 2002 collection year.

Joseph Badger Local School District

Principal Taxpayers

Public Utilities Tax

December 31, 2001

<u>Name of Taxpayer</u>	<u>Assessed Value (1)</u>	<u>Percent of Total Assessed Value</u>
Ohio Edison Company	\$2,128,720	45.17%
United Telephone	1,409,970	29.92
American Transmission Services	492,710	10.46
Norfolk Southern Combined	396,530	8.42
CSX Transportation	118,450	2.51
Eastern Natural Gas	<u>90,460</u>	<u>1.92</u>
Total	<u>\$4,636,840</u>	<u>98.40%</u>
Total Assessed Value	<u>\$4,712,220</u>	

Source: Trumbull County Auditor

(1) Assessed values are for the 2002 collection year.

Joseph Badger Local School District

Per Pupil Cost

Last Ten Fiscal Years

<u>Year</u>	<u>General Governmental Expenditures (1)</u>	<u>Average Daily Membership</u>	<u>Per Pupil Cost</u>
2002	\$7,861,408	1,202	\$6,540
2001	7,568,330	1,191	6,355
2000	6,714,181	1,148	5,849
1999	5,891,150	1,104	5,336
1998	5,630,558	1,104	5,100
1997	5,615,609	1,107	5,073
1996	5,025,743	1,138	4,416
1995	4,602,303	N/A	N/A
1994	4,502,177	N/A	N/A
1993	4,424,221	N/A	N/A

Source: School District Financial Records.

(1) 1996 through 2002 on Modified Accrual Basis.
All other years based on Cash Basis.

Joseph Badger Local School District

Teacher Education And Experience

June 30, 2002

<u>Degree</u>	<u>Number of Teachers</u>	<u>Percentage of Total</u>
Bachelor's Degree	44	59%
Master's Degree	<u>30</u>	<u>41%</u>
Total	<u>74</u>	<u>100%</u>

<u>Years of Experience</u>	<u>Number of Teachers</u>	<u>Percentage of Total</u>
0 - 5	15	20%
6 - 10	10	14%
11 and over	<u>49</u>	<u>66%</u>
	<u>74</u>	<u>100%</u>

Source: School District Personnel Records.



STATE OF OHIO
OFFICE OF THE AUDITOR

JIM PETRO, AUDITOR OF STATE

88 East Broad Street
P.O. Box 1140
Columbus, Ohio 43216-1140
Telephone 614-466-4514
800-282-0370
Facsimile 614-466-4490

JOSEPH BADGER LOCAL SCHOOL DISTRICT

TRUMBULL COUNTY

CLERK'S CERTIFICATION

This is a true and correct copy of the report which is required to be filed in the Office of the Auditor of State pursuant to Section 117.26, Revised Code, and which is filed in Columbus, Ohio.

Susan Babbitt

CLERK OF THE BUREAU

**CERTIFIED
JANUARY 30, 2003**