



Dave Yost • Auditor of State

**SOUTHERN OHIO EDUCATIONAL SERVICE CENTER
CLINTON COUNTY**

TABLE OF CONTENTS

TITLE	PAGE
Independent Auditor's Report	1
Management's Discussion and Analysis.....	5
Basic Financial Statements:	
Government-wide Financial Statements:	
Statement of Net Position as of June 30, 2014	13
Statement of Activities – For the Fiscal Year Ended June 30, 2014	14
Fund Financial Statements:	
Balance Sheet – Governmental Funds June 30, 2014.....	15
Reconciliation of Total Governmental Fund Balances to Net Position of Governmental Activities as of June 30, 2014	16
Statement of Revenues, Expenditures, and Changes In Fund Balances – Governmental Funds For the Fiscal Year Ended June 30, 2014	17
Reconciliation of the Statement of Revenues, Expenditures, and Changes in Fund Balance of Governmental Funds to the Statement of Activities For the Fiscal Year Ended June 30, 2014.....	18
Statement of Fiduciary Net Position – Fiduciary Funds As of June 30, 2014.....	19
Statement of Changes in Fiduciary Net Position – Fiduciary Fund For the Fiscal Year Ended June 30, 2014.....	20
Notes to the Basic Financial Statements	21
Required Supplemental Information:	
Schedule of Revenues, Expenditures and Changes In Fund Balance Budget and Actual (Non-GAAP Budgetary Basis) – General Fund For the Fiscal Year Ended June 30, 2014	41
Notes to the Required Supplementary Information.....	42
Schedule of Federal Awards Receipts and Expenditures.....	45
Notes to Schedule of Federal Awards Receipts and Expenditures	46
Independent Auditors' Report on Internal Control Over Financial Reporting and on Compliance and Other Matters Required by <i>Government Auditing Standards</i>	47
Independent Auditors' Report on Compliance with Requirements Applicable to Each Major Federal Programs and Internal Control Over Compliance Required by OMB Circular A-133	49
Schedule of Findings.....	51

This page intentionally left blank.



Dave Yost • Auditor of State

INDEPENDENT AUDITOR'S REPORT

Southern Ohio Educational Service Center
Clinton County
3321 Airborne Road
Wilmington, Ohio 45177

To the Board of Education:

Report on the Financial Statements

We have audited the accompanying financial statements of the governmental activities, the major fund, and the aggregate remaining fund information of Southern Ohio Educational Service Center, Clinton County, Ohio (the Center), as of and for the year ended June 30, 2014, and the related notes to the financial statements, which collectively comprise the Center's basic financial statements as listed in the table of contents.

Management's Responsibility for the Financial Statements

Management is responsible for preparing and fairly presenting these financial statements in accordance with accounting principles generally accepted in the United States of America; this includes designing, implementing, and maintaining internal control relevant to preparing and fairly presenting financial statements that are free from material misstatement, whether due to fraud or error.

Auditor's Responsibility

Our responsibility is to opine on these financial statements based on our audit. We audited in accordance with auditing standards generally accepted in the United States of America and the financial audit standards in the Comptroller General of the United States' *Government Auditing Standards*. Those standards require us to plan and perform the audit to reasonably assure the financial statements are free from material misstatement.

An audit requires obtaining evidence about financial statement amounts and disclosures. The procedures selected depend on our judgment, including assessing the risks of material financial statement misstatement, whether due to fraud or error. In assessing those risks, we consider internal control relevant to the Center's preparation and fair presentation of the financial statements in order to design audit procedures that are appropriate in the circumstances, but not to the extent needed to opine on the effectiveness of the Center's internal control. Accordingly, we express no opinion. An audit also includes evaluating the appropriateness of management's accounting policies and the reasonableness of their significant accounting estimates, as well as our evaluation of the overall financial statement presentation.

We believe the audit evidence we obtained is sufficient and appropriate to support our audit opinions.

Opinion

In our opinion, the financial statements referred to above present fairly, in all material respects, the respective financial position of the governmental activities, the major fund, and the aggregate remaining fund information of the Southern Ohio Educational Service Center, Clinton County, Ohio, as of June 30, 2014, and the respective changes in financial position thereof for the year then ended in accordance with the accounting principles generally accepted in the United States of America.

Required Supplementary Information

Accounting principles generally accepted in the United States of America require this presentation to include *Management's discussion and analysis*, and *Required budgetary comparison schedule* listed in the table of contents, to supplement the basic financial statements. Although this information is not part of the basic financial statements, the Governmental Accounting Standards Board considers it essential for placing the basic financial statements in an appropriate operational, economic, or historical context. We applied certain limited procedures to the required supplementary information in accordance with auditing standards generally accepted in the United States of America, consisting of inquiries of management about the methods of preparing the information and comparing the information for consistency with management's responses to our inquiries, to the basic financial statements, and other knowledge we obtained during our audit of the basic financial statements. We do not opine or provide any assurance on the information because the limited procedures do not provide us with sufficient evidence to opine or provide any other assurance.

Supplementary and Other Information

Our audit was conducted to opine on the Center's basic financial statements taken as a whole.

The Schedule of Federal Award Receipts and Expenditures presents additional analysis as required by the U.S. Office of Management and Budget Circular A-133, Audits of States, Local Governments, and Non-Profit Organizations and is also not a required part of the financial statements.

The Schedule is management's responsibility, and derives from and relate directly to the underlying accounting and other records used to prepare the basic financial statements. We subjected this schedule to the auditing procedures we applied to the basic financial statements. We also applied certain additional procedures, including comparing and reconciling the schedule directly to the underlying accounting and other records used to prepare the basic financial statements or to the basic financial statements themselves in accordance with auditing standards generally accepted in the United States of America. In our opinion, this schedule is fairly stated in all material respects in relation to the basic financial statements taken as a whole.

Other Reporting Required by Government Auditing Standards

In accordance with *Government Auditing Standards*, we have also issued our report dated March 16, 2015, on our consideration of the Center's internal control over financial reporting and our tests of its compliance with certain provisions of laws, regulations, contracts and grant agreements and other matters. That report describes the scope of our internal control testing over financial reporting and compliance, and the results of that testing, and does not opine on internal control over financial reporting or on compliance. That report is an integral part of an audit performed in accordance with *Government Auditing Standards* in considering the Center's internal control over financial reporting and compliance.

A handwritten signature in black ink that reads "Dave Yost". The signature is written in a cursive style with a large, looping "D" and "Y".

Dave Yost
Auditor of State

Columbus, Ohio

March 16, 2015

This page intentionally left blank.

**Southern Ohio Educational Service Center
Management's Discussion and Analysis
For the Fiscal Year Ended June 30, 2014
(Unaudited)**

The discussion and analysis of Southern Ohio Educational Service Center's financial performance provides an overall review of the Center's financial activities for the fiscal year ended June 30, 2014. The intent of this discussion and analysis is to look at the Center's financial performance as a whole; readers should also review the notes to the basic financial statements and financial statements to enhance their understanding of the Center's performance.

Financial Highlights

Key financial highlights for 2014 are as follows:

- Net position of governmental activities decreased \$225,278.
- General revenues accounted for \$822,006 in revenue or 22% of all revenues. Program specific revenues in the form of charges for services and sales, grants and contributions accounted for \$3,000,063 or 78% of total revenues of \$3,822,069.
- The Center had \$4,047,347 in expenses related to governmental activities; \$3,000,063 of these expenses were offset by program specific charges for services, grants or contributions. General revenues of \$822,006 were also used to provide for these programs.

Overview of the Financial Statements

This annual report consists of a series of financial statements and notes to those statements. These statements are organized so the reader can understand the Center as a financial whole, an entire operating entity. The statements then proceed to provide an increasingly detailed look at specific financial activities.

The *Statement of Net position* and *Statement of Activities* provide information about the activities of the whole Center, presenting both an aggregate view of the Center's finances and a longer-term view of those finances. Fund financial statements provide the next level of detail. For governmental funds, these statements tell how services were financed in the short-term as well as what remains for future spending. The fund financial statements also look at the Center's most significant funds with all other nonmajor funds presented in total in one column. The General Fund is the major fund of the Center.

Government-wide Financial Statements

While this document contains the large number of funds used by the Center to provide programs and activities, the view of the Center as a whole looks at all financial transactions and asks the question, "How did we do financially during 2014?" The Government-wide Financial Statements answer this question. These statements include *all assets, deferred outflows of resources, liabilities and deferred inflows of resources* using the accrual basis of accounting similar to the accounting used by most private-sector companies. This basis of accounting takes into account all of the current year's revenues and expenses regardless of when cash is received or paid.

**Southern Ohio Educational Service Center
Management's Discussion and Analysis
For the Fiscal Year Ended June 30, 2014
(Unaudited)**

These two statements report the Center's *net position* and changes in those assets. This change in net position is important because it tells the reader that, for the Center as a whole, the financial position has improved or diminished. The causes of this change may be the result of many factors, both financial and non-financial. Non-financial factors include facility conditions, required educational programs and other factors.

In the Government-wide Financial Statements, the Center presents:

- Governmental Activities – Most of the Center's programs and services are reported here including instruction and support services.

Fund Financial Statements

The analysis of the Center's major funds is presented in the Fund Financial Statements. Fund financial reports provide detailed information about the Center's major funds. The Center uses many funds to account for a multitude of financial transactions. However, these fund financial statements focus on the Center's most significant funds.

Governmental Funds Most of the Center's activities are reported in governmental funds, which focus on how money flows into and out of those funds and the balances left at year-end available for spending in future periods. These funds are reported using an accounting method called *modified accrual* accounting, which measures cash and all other *financial assets* that can readily be converted to cash. The governmental fund statements provide a detailed *short-term view* of the Center's general government operations and the basic services it provides. Governmental fund information helps you determine whether there are more or fewer financial resources that can be spent in the near future to finance educational programs. The relationship (or differences) between governmental *activities* (reported in the Statement of Net position and the Statement of Activities) and governmental *funds* is reconciled in the financial statements.

Fiduciary Funds Fiduciary Funds are used to account for resources held for the benefits of parties outside the government. Fiduciary Funds are not reflected in the government-wide financial statements because the resources of those funds are not available to support the Center's own programs.

The Center as a Whole

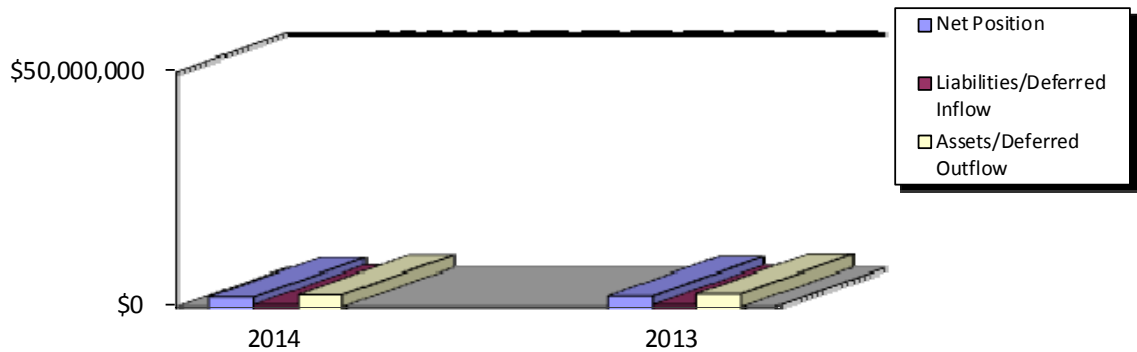
As stated previously, the Statement of Net position looks at the Center as a whole. Table 1 provides a summary of the District's net position for 2014 compared to 2013:

This Space Intentionally Left Blank

**Southern Ohio Educational Service Center
Management's Discussion and Analysis
For the Fiscal Year Ended June 30, 2014
(Unaudited)**

Table 1
Net Position

	Governmental Activities	
	2014	2013
Assets:		
Current and Other Assets	\$2,306,595	\$2,479,836
Capital Assets	341,138	360,411
Total Assets	<u>2,647,733</u>	<u>2,840,247</u>
Liabilities:		
Other Liabilities	254,633	220,530
Long-Term Liabilities	<u>253,723</u>	<u>255,062</u>
Total Liabilities	<u>508,356</u>	<u>475,592</u>
Net Position:		
Net Investment in Capital Assets	341,138	360,411
Restricted	5,844	15,044
Unrestricted	<u>1,792,395</u>	<u>1,989,200</u>
Total Net Position	<u><u>\$2,139,377</u></u>	<u><u>\$2,364,655</u></u>



Over time, net position can serve as a useful indicator of a government's financial position. At June 30, 2014, the District's assets exceeded liabilities by \$2,139,377.

At year-end, capital assets represented 13% of total assets. Capital assets include land, buildings and improvements, and equipment. Capital assets at June 30, 2014, were \$341,138. These capital assets are used to provide services to the students and are not available for future spending. Although the District's investment in capital assets is reported net of related debt, it should be noted that the resources to repay the debt must be provided from other sources, since capital assets may not be used to liquidate these liabilities.

Southern Ohio Educational Service Center
Management's Discussion and Analysis
For the Fiscal Year Ended June 30, 2014
(Unaudited)

A portion of the District's net position, \$5,844 represents resources that are subject to external restriction on how they must be used. The external restriction will not affect the availability of fund resources for future use.

Current and Other Assets decreased mainly due to a decrease in equity in pooled cash and investments, which was mainly due to a decrease in bank balance. Other Liabilities increased mainly due to slight increases in accrued wages and benefits.

Table 2 shows the changes in net position for fiscal years 2014 and 2013.

Table 2
Changes in Net Position

	Governmental Activities	
	2014	2013
Revenues:		
Program Revenues		
Charges for Services	\$2,774,909	\$2,673,204
Operating Grants, Contributions	225,154	379,722
General Revenues:		
Grants and Entitlements	738,484	692,469
Other	83,522	75,094
Total Revenues	<u>3,822,069</u>	<u>3,820,489</u>
Program Expenses:		
Instruction	807,427	825,482
Support Services:		
Pupil and Instructional Staff	1,961,315	2,107,279
School Administrative, General		
Administration, and Fiscal	725,316	814,251
Operations and Maintenance	73,558	66,111
Central	449,323	320,957
Operation of Non-Instructional Services	<u>30,408</u>	<u>0</u>
Total Program Expenses	<u>4,047,347</u>	<u>4,134,080</u>
Change in Net Position	(225,278)	(313,591)
Net Position Beginning of Year	<u>2,364,655</u>	<u>2,678,246</u>
Net Position End of Year	<u><u>\$2,139,377</u></u>	<u><u>\$2,364,655</u></u>

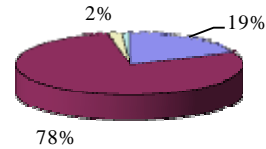
The Center revenues are mainly from three sources. Charges for services, operating grants and contributions and grants and entitlements comprised 98% of the Center's revenues for governmental activities.

Instruction comprises 20.0% of governmental program expenses. Support services expenses were 80.0% of governmental program expenses.

**Southern Ohio Educational Service Center
Management's Discussion and Analysis
For the Fiscal Year Ended June 30, 2014
(Unaudited)**

Charges for services and Operating Grants made up 78% of revenues for governmental activities for the Center in 2014. The Center's reliance upon charges for services and operating grants is demonstrated by the following graph:

Revenue Sources	2014	Percent of Total
General Grants	\$738,484	19%
Program Revenues	3,000,063	78%
Investment Earnings	49,734	2%
Other Revenues	33,788	1%
	<u>\$3,822,069</u>	<u>100%</u>



Revenues in total increased in 2014 as compared to 2013 due to an increase in charges for services received throughout the fiscal year. Total instruction expenses decreased in 2014 as compared to 2013 due to the Center cutting costs.

Governmental Activities

The Statement of Activities shows the cost of program services and the charges for services and grants offsetting those services. Table 3 shows, for government activities, the total cost of services and the net cost of services.

Table 3
Governmental Activities

	Total Cost of Services		Net Cost of Services	
	2014	2013	2014	2013
Instruction	\$807,427	\$825,482	(\$283,626)	\$475,133
Support Services:				
Pupil and Instructional Staff	1,961,315	2,107,279	(127,427)	(675,517)
School Administrative, General Administration, and Fiscal	725,316	814,251	(84,742)	(495,482)
Operations and Maintenance	73,558	66,111	(73,558)	(66,111)
Central	449,323	320,957	(447,523)	(319,157)
Operation of Non-Instructional Services	30,408	0	(30,408)	0
Total Expenses	<u>\$4,047,347</u>	<u>\$4,134,080</u>	<u>(\$1,047,284)</u>	<u>(\$1,081,134)</u>

The Center's Funds

The Center has one major governmental fund: the General Fund. Assets of this fund comprise \$2,298,254 (99%) of the total \$2,320,589 governmental funds' assets.

General Fund: Fund balance at June 30, 2014 was \$2,018,334 including \$1,865,463 of unassigned balance. The primary reason for the decrease in fund balance was a result of an increase in the Center's instructional expenditures.

**Southern Ohio Educational Service Center
Management's Discussion and Analysis
For the Fiscal Year Ended June 30, 2014
(Unaudited)**

General Fund Budgeting Highlights

The Center's budget is prepared according to Ohio law and is based on accounting for certain transactions on a basis of cash receipts, disbursements and encumbrances. The most significant budgeted fund is the General Fund.

During the course of fiscal 2014, the Center amended its general fund budget. The Center uses program-based budgeting and the budgeting systems are designed to tightly control total program budgets but provide flexibility for program management. During the course of the year, the Center revised the Budget in an attempt to deal with unexpected changes in revenues and expenditures.

For the General Fund, original budgeted revenues were \$3,450,470 and final budgeted revenues were \$3,632,379. Original budgeted expenditures were \$5,215,471 and final budgeted expenditures were \$5,418,429; actual ending fund balance of \$2,094,150.

Capital Assets and Debt Administration

Capital Assets

At the fiscal year end 2014, the Center had \$341,138 invested in land, buildings and improvements and equipment. Table 4 shows fiscal 2014 balances as compared to 2013:

Table 4
Capital Assets at June 30
(Net of Depreciation)

	Governmental Activities	
	2014	2013
Land	\$31,490	\$31,490
Buildings and Improvements	300,957	313,910
Equipment	8,691	15,011
Total Net Capital Assets	<u>\$341,138</u>	<u>\$360,411</u>

Capital assets decreased in fiscal year 2014 due to the recognition of depreciation and deletions.

See Note 5 to the basic financial statements for further details on the Center's capital assets.

Debt

At June 30, 2014, the Center had no outstanding debt obligations.

For the Future

The Center relies heavily on charges for services and intergovernmental revenues. This scenario requires management to plan carefully and prudently to provide the resources to meet needs over the next several years. Financially, the future of the Center is not without challenges. Management must

**Southern Ohio Educational Service Center
Management's Discussion and Analysis
For the Fiscal Year Ended June 30, 2014
(Unaudited)**

diligently plan future expenditures. All of the Center's financial abilities will be needed to meet the challenges of the future. With careful planning and monitoring of the Center's finances, the Center's management is confident that the Center can continue to provide quality services to other organizations in the future.

Contacting the Center's Financial Management

This financial report is designed to provide our citizens, taxpayers, and investors and creditors with a general overview of the Center's finances and to show the Center's accountability for the money it receives. If you have questions about this report or need additional financial information, contact the Treasurer's Office at Southern Ohio Educational Service Center, 3321 Airborne Road, Wilmington, Ohio 45177.

This Space Intentionally Left Blank

This page intentionally left blank.

Southern Ohio Educational Service Center
Statement of Net Position
June 30, 2014

	<u>Governmental Activities</u>
Assets:	
Equity in Pooled Cash and Investments	\$2,259,026
Receivables (Net):	
Accounts	13,955
Interest	11,285
Intergovernmental	22,329
Nondepreciable Capital Assets	31,490
Depreciable Capital Assets, Net	<u>309,648</u>
 Total Assets	 <u>2,647,733</u>
 Liabilities:	
Accounts Payable	18,268
Accrued Wages and Benefits	236,365
Long-Term Liabilities:	
Due Within One Year	49,252
Due In More Than One Year	<u>204,471</u>
 Total Liabilities	 <u>508,356</u>
 Net Position:	
Net Investment in Capital Assets	341,138
Restricted for:	
Other Purposes	5,844
Unrestricted	<u>1,792,395</u>
 Total Net Position	 <u><u>\$2,139,377</u></u>

See accompanying notes to the basic financial statements.

Southern Ohio Educational Service Center
Statement of Activities
For the Fiscal Year Ended June 30, 2014

	Program Revenues		Net (Expense) Revenue	
	Expenses	Charges for Services and Sales	Operating Grants and Contributions	
			and Changes in Net Position Governmental Activities	
Governmental Activities:				
Instruction:				
Regular	\$280,052	\$5,144	\$44,359	(\$230,549)
Special	505,989	354,685	89,445	(61,859)
Vocational	21,386	0	0	(21,386)
Other	0	30,168	0	30,168
Support Services:				
Pupil	950,910	978,700	20,897	48,687
Instructional Staff	1,010,405	767,668	66,623	(176,114)
General Administration	33,561	0	0	(33,561)
School Administration	435,144	519,435	0	84,291
Fiscal	256,611	119,109	2,030	(135,472)
Operations and Maintenance	73,558	0	0	(73,558)
Central	449,323	0	1,800	(447,523)
Operation of Non-Instructional Services	30,408	0	0	(30,408)
Total Governmental Activities	\$4,047,347	\$2,774,909	\$225,154	(1,047,284)

General Revenues:	
Grants and Entitlements, Not Restricted	738,484
Unrestricted Contributions	1,575
Investment Earnings	49,734
Other Revenues	32,213
Total General Revenues	822,006
Change in Net Position	(225,278)
Net Position - Beginning of Year	2,364,655
Net Position - End of Year	\$2,139,377

See accompanying notes to the basic financial statements

Southern Ohio Educational Service Center
Balance Sheet
Governmental Funds
June 30, 2014

	General	Other Governmental Funds	Total Governmental Funds
Assets:			
Equity in Pooled Cash and Investments	\$2,259,020	\$6	\$2,259,026
Receivables (Net):			
Accounts	13,955	0	13,955
Interest	11,285	0	11,285
Intergovernmental	0	22,329	22,329
Interfund	13,994	0	13,994
Total Assets	2,298,254	22,335	2,320,589
Liabilities:			
Accounts Payable	16,801	1,467	18,268
Accrued Wages and Benefits	236,365	0	236,365
Compensated Absences	22,072	0	22,072
Interfund Payable	0	13,994	13,994
Total Liabilities	275,238	15,461	290,699
Deferred Inflows of Resources:			
Grants	0	13,764	13,764
Unavailable Revenue	4,682	0	4,682
Total Deferred Inflows of Resources	4,682	13,764	18,446
Fund Balances:			
Restricted	0	5,868	5,868
Assigned	152,871	0	152,871
Unassigned	1,865,463	(12,758)	1,852,705
Total Fund Balances	2,018,334	(6,890)	2,011,444
Total Liabilities, Deferred Inflows and Fund Balances	\$2,298,254	\$22,335	\$2,320,589

See accompanying notes to the basic financial statements.

Southern Ohio Educational Service Center
Reconciliation of Total Governmental Fund Balance to
Net Position of Governmental Activities
June 30, 2014

Total Governmental Fund Balance \$2,011,444

Amounts reported for governmental activities in the
statement of net position are different because:

Capital assets used in governmental activities are not financial
resources and, therefore, are not reported in the funds.

Capital assets used in the operation of Governmental Funds 341,138

Other long-term assets are not available to pay for current-
period expenditures and, therefore, are deferred in the funds.

Interest	\$4,682	
Intergovernmental	<u>13,764</u>	
		18,446

Some liabilities reported in the statement of net position do not
require the use of current financial resources and, therefore,
are not reported as liabilities in governmental funds.

Compensated Absences (231,651)

Net Position of Governmental Activities \$2,139,377

See accompanying notes to the basic financial statements.

Southern Ohio Educational Service Center
Statement of Revenues, Expenditures
and Changes in Fund Balance
Governmental Funds
For the Fiscal Year Ended June 30, 2014

	General	Other Governmental Funds	Total Governmental Funds
Revenues:			
Charges for Educational Services	\$2,566,803	\$0	\$2,566,803
Charges for Non-Educational Services	168,791	0	168,791
Investment Earnings	48,632	0	48,632
Intergovernmental	827,929	121,945	949,874
Other Revenues	72,043	0	72,043
Total Revenues	3,684,198	121,945	3,806,143
Expenditures:			
Current:			
Instruction:			
Regular	232,468	45,482	277,950
Special	515,809	0	515,809
Vocational	21,141	0	21,141
Support Services:			
Pupil	929,310	18,582	947,892
Instructional Staff	962,199	59,315	1,021,514
General Administration	33,561	0	33,561
School Administration	417,234	0	417,234
Fiscal	249,976	2,339	252,315
Operations and Maintenance	73,558	0	73,558
Central	432,112	1,800	433,912
Operation of Non-Instructional Services	30,408	0	30,408
Total Expenditures	3,897,776	127,518	4,025,294
Excess of Revenues Over (Under) Expenditures	(213,578)	(5,573)	(219,151)
Other Financing Sources (Uses):			
Proceeds from Sale of Capital Assets	5,306	0	5,306
Total Other Financing Sources (Uses)	5,306	0	5,306
Net Change in Fund Balance	(208,272)	(5,573)	(213,845)
Fund Balance - Beginning of Year	2,226,606	(1,317)	2,225,289
Fund Balance - End of Year	\$2,018,334	(\$6,890)	\$2,011,444

See accompanying notes to the basic financial statements.

Southern Ohio Educational Service Center
 Reconciliation of the Statement of Revenues, Expenditures, and Changes
 in Fund Balance of Governmental Funds to the Statement of Activities
 For the Fiscal Year Ended June 30, 2014

Net Change in Fund Balance - Total Governmental Funds (\$213,845)

Amounts reported for governmental activities in the
 statement of activities are different because:

Governmental funds report capital asset additions as expenditures.
 However, in the statement of activities, the cost of those assets is
 allocated over their estimated useful lives as depreciation
 expense. This is the amount of the difference between capital
 asset additions and depreciation in the current period.

Depreciation Expense (15,027)

Governmental funds only report the disposal of assets to the
 extent proceeds are received from the sale. In the statement
 of activities, a gain or loss is reported for each disposal. The
 amount of the proceeds must be removed and the gain or loss
 on the disposal of capital assets must be recognized. This is the
 amount of the difference between the proceeds and the gain or loss.

(4,246)

Revenues in the statement of activities that do not provide
 current financial resources are not reported as revenues in
 the funds.

Interest	\$1,102	
Intergovernmental	(2,597)	
	(1,495)	(1,495)

Some expenses reported in the statement of activities do not require the
 use of current financial resources and, therefore, are not reported as
 expenditures in governmental funds.

Compensated Absences	9,335	
	9,335	

Change in Net Position of Governmental Activities (\$225,278)

See accompanying notes to the basic financial statements.

Southern Ohio Educational Service Center
Statement of Fiduciary Net Position
Fiduciary Fund
June 30, 2014

	Private Purpose Trust	Agency
	<u> </u>	<u> </u>
Assets:		
Equity in Pooled Cash and Investments	\$0	\$1,133,277
Restricted Cash and Investments	887,501	0
Receivables (Net):		
Accounts	0	27,852
Interest	6,232	0
Intergovernmental	<u>0</u>	<u>300,431</u>
Total Assets	<u>893,733</u>	<u>1,461,560</u>
Liabilities:		
Accounts Payable	84	17,501
Other Liabilities	<u>2,163</u>	<u>1,444,059</u>
Total Liabilities	<u>2,247</u>	<u>\$1,461,560</u>
Net Position:		
Restricted for Endowment - Expendable	291,486	
Restricted for Endowment - Nonexpendable	<u>600,000</u>	
Total Net Position	<u>\$891,486</u>	

See accompanying notes to the basic financial statements.

Southern Ohio Educational Service Center
Statement of Changes in Fiduciary Net Position
Fiduciary Fund
For the Fiscal Year Ended June 30, 2014

	Private Purpose Trust
Additions:	
Investment Earnings	<u>\$16,798</u>
Total Additions	<u>16,798</u>
Deductions:	
Scholarships	<u>42,337</u>
Total Deductions	<u>42,337</u>
Change in Net Position	(25,539)
Net Position - Beginning of Year	<u>917,025</u>
Net Position - End of Year	<u>\$891,486</u>

See accompanying notes to the basic financial statements.

Southern Ohio Educational Service Center
Notes to the Basic Financial Statements
For the Fiscal Year Ended June 30, 2014

Note 1 – Description of the Educational Service Center and Reporting Entity

The Southern Ohio Educational Service Center Governing Board (referred to as "Center") organized on July 1, 1997, and operates under current standards prescribed by the Ohio State Board of Education as provided in 3311.053 of the Ohio Revised Code for county educational service centers.

The Center was formerly known as the Clinton-Fayette-Highland Educational Service District after the merger of the Clinton County, Fayette County and the Highland County Educational Service Centers. Effective July 1, 2005, as approved by the governing board, the Center became known as the Southern Ohio Educational Service Center after the expansion of their service to include Adams County Ohio Valley School District. This was a name change only, and did not change the organizational structure or services provided by the Center. The Governing Board is made up of nine elected board members. The elected governing board can, at the January organizational meeting, appoint up to 8 additional members to serve on the governing board for a maximum of 17 members. The resolution to merge explains this issue in more detail.

This Center operates the following office facilities--the Central Board Office at 3321 Airborne Road, Wilmington, Ohio and the Highland County Office at 39 Willettsville Pike, Hillsboro, Ohio.

The Center employs, including Region 14/Hopewell 122 employees to provide service to the eight local school districts in Clinton County (Blanchester, Clinton-Massie, East Clinton), Fayette County (Miami Trace), Highland County (Bright, Fairfield, Lynchburg-Clay), Adams County (Adams County/Ohio Valley): the three city school districts of Hillsboro, Washington Court House, and Wilmington, the one exempted village school district of Greenfield, and the Laurel Oaks Career Development Center.

The Center provides fiscal agent services to the following organizations: Region 14/Hopewell, 5350 West New Market Road, Hillsboro, Ohio; DARE, through the Clinton County Sheriff in Wilmington, Ohio. Region 14/Hopewell is accounted for as an agency trust fund while the other funds with fiscal agent relationships are reported as agency funds for GAAP purposes. The Center also provides fiscal agent services to the Clinton County Alternative School. Participation fees and tuition for the alternative school are included within the General Fund. Grant activity for the alternative school is included within the Special Revenue Fund.

Reporting Entity

The Center reporting entity is comprised of the primary government. The primary government of the Center consists of all funds, departments, boards and agencies that are not legally separate from the Center. For the Center, this includes general operations, preschool, teacher development, gifted, work-study, special education, alternative school, media center cooperative, technology, speech therapy, psychology, social work, and multi-handicap activities and programs.

The Center is associated with six organizations, which are defined as jointly governed organizations, group purchasing pools, and related organizations. These organizations are presented in Notes 12, 13, and 14 to the basic financial statements.

**Southern Ohio Educational Service Center
Notes to the Basic Financial Statements
For the Fiscal Year Ended June 30, 2014**

Note 2 – Summary of Significant Accounting Policies

The financial statements of the Center have been prepared in conformity with generally accepted accounting principles (GAAP) as applied to governmental units. The Governmental Accounting Standards Board (GASB) is the accepted standard-setting body for establishing governmental accounting and financial reporting principles. The most significant of the Center's accounting policies are described below.

Measurement Focus

Government-wide Financial Statements

The Center's basic financial statements consist of government-wide statements, including a statement of net position and a statement of activities and fund financial statements, which provide a more detailed level of financial information.

The government-wide statements are prepared using the economic resources measurement focus. All assets, deferred outflows of resources, liabilities and deferred inflows of resources associated with the operation of the Center are included on the statement of net position. Fiduciary Funds are not included in entity-wide statements.

The government-wide statement of activities presents a comparison between direct expenses and programs revenues for each function or program of the Center's governmental activities. Direct expenses are those that are specifically associated with a service, program or department and therefore clearly identifiable to a particular function. Program revenues include charges paid by the recipient of the goods or services offered by the program and contributions that are restricted to meeting the operational or capital requirements of a particular program. Revenues which are not classified as program revenues are presented as general revenues of the Center, with certain limited exceptions. The comparison of direct expenses with program revenues identifies the extent to which each governmental function is self-financing or draws from the general revenues of the Center.

Fund Financial Statements

All governmental funds are accounted for using a flow of current financial resources measurement focus. With this measurement focus, only current assets, deferred outflows of resources, current liabilities and deferred inflows of resources generally are included on the balance sheet. The statement of revenues, expenditures and changes in fund balances reports on the sources (i.e., revenues and other financing sources) and uses (i.e., expenditures and other financing uses) of current financial resources. This approach differs from the manner in which the governmental activities of the government-wide financial statements are prepared. Governmental fund financial statements therefore include reconciliation with brief explanations to better identify the relationship between the government-wide statements and the statements for governmental funds.

The private purpose fund is reported using the economic resources measurement focus.

**Southern Ohio Educational Service Center
Notes to the Basic Financial Statements
For the Fiscal Year Ended June 30, 2014**

Fund Accounting

The Center uses funds to maintain its financial records during the fiscal year. Fund accounting is designed to demonstrate legal compliance and to aid management by segregating transactions related to certain Center functions or activities. A fund is defined as a fiscal and accounting entity with a self-balancing set of accounts. The various funds of the Center are grouped into the categories governmental and fiduciary. The focus of government fund financial statements is on major funds rather than reporting funds by type. Each major fund is presented in a separate column. Nonmajor funds are aggregated and presented in a single column.

Governmental Funds

Governmental funds focus on the sources, uses and balances of current financial resources. Expendable assets are assigned to the various governmental funds according to the purposes for which they may or must be used. Current liabilities are assigned to the fund from which they will be paid. The difference between governmental fund assets, deferred outflows of resources, liabilities and deferred inflows of resources is reported as fund balance. The following is the Center's major governmental fund:

General Fund - The general fund is used to account for all financial resources except those required to be accounted for in another fund. The general fund balance is available for any purpose provided it is expended or transferred according to the general laws of Ohio.

Fiduciary Funds

Fiduciary fund reporting focuses on net position and changes in net position. The fiduciary fund category is split into four classifications: pension trust funds, investment trust funds, private purpose trust funds and agency funds. Trust funds are used to account for assets held by the Center under a trust agreement for individuals, private organizations, or other governments and are therefore not available to support the Center's own programs. Agency funds are custodian in nature (assets equal liabilities) and do not involve measurement of results of operations. The Center has two agency funds. The Center has a private purpose trust which benefits programs for individual students.

Basis of Accounting

Basis of accounting determines when transactions are recorded in the financial records and reported on the financial statements. Government-wide financial statements are prepared using the accrual basis of accounting. Governmental funds use the modified accrual basis of accounting. Fiduciary funds also use the accrual basis of accounting. Differences in the actual and the modified accrual basis of accounting arise in the recognition of revenue, the recording of deferred revenue, and in the presentation of expenses versus expenditures.

Revenues – Exchange and Non-exchange Transactions

Revenue resulting from exchange transactions, in which each party gives and receives essentially equal value, is recorded on the accrual basis when the exchange takes place. On a modified accrual basis, revenue is recorded in the fiscal year in which the resources are

Southern Ohio Educational Service Center
Notes to the Basic Financial Statements
For the Fiscal Year Ended June 30, 2014

measurable and become available. Available means that the resources will be collected within the current fiscal year or are expected to be collected soon enough thereafter to be used to pay liabilities of the current fiscal year. For the Center, available means expected to be received within sixty days of fiscal year end.

Non-exchange transactions, in which the Center receives value without directly giving equal value in return, included grants, entitlements and donations. Revenue from grants, entitlements and donations is recognized in the fiscal year in which all eligibility requirements have been satisfied. Eligibility requirements include timing requirements, which specify the year when the resources are required to be used or the year when use is first permitted, matching requirements, in which the Center must provide local resources to be used for a specified purpose, and expenditure requirements, in which the resources are provided to the Center on a reimbursement basis. On a modified accrual basis, revenue from nonexchange transactions must also be available before it can be recognized.

Under the modified accrual basis, the following revenue sources are considered to be both measurable and available at year end: grants and interest.

Deferred Outflows/Inflows of Resources

In addition to assets, the statements of financial position will sometimes report a separate section for deferred outflows of resources. Deferred outflows of resources, represents a consumption of net position that applies to a future period and will not be recognized as an outflow of resources (expense/expenditure) until then.

In addition to liabilities, the statements of financial position report a separate section for deferred inflows of resources. Deferred inflows of resources represent an acquisition of net position that applies to a future period and will not be recognized as an inflow of resources (revenue) until that time. For the District, deferred inflows of resources include grants and other taxes and unavailable revenue (which include investment earnings).

Expenses/Expenditures

On the accrual basis of accounting, expenses are recognized at the time they are incurred. The measurement focus of governmental fund accounting is on decreases in net financial resources (expenditures) rather than expenses. Expenditures are generally recognized in the accounting period in which the related fund liability is incurred, if measurable. Allocations of cost, such as depreciation and amortization, are not recognized in the governmental funds.

Equity in Pooled Cash and Investments

Cash received by the Center is pooled for investment purposes. Interest in the pool is presented as "equity in pooled cash and investments" on the financial statements.

Except for nonparticipating investment contracts, investments are reported at fair value which is based on quoted market prices. Nonparticipating investment contracts such as nonnegotiable certificates of deposits and repurchase agreements are reported at cost.

Southern Ohio Educational Service Center
Notes to the Basic Financial Statements
For the Fiscal Year Ended June 30, 2014

Following Ohio statutes, the Board has, by resolution, specified the funds to receive an allocation of interest earnings. Interest revenue credited to the general fund during the fiscal year amounted to \$48,632.

Capital Assets

All capital assets are capitalized at cost (or estimated historical cost) and updated for additions and retirements during the year. Donated capital assets are recorded at their fair market values as of the date received. The Center maintains a capitalization threshold of two thousand five hundred dollars (\$2,500). The Center does not possess any infrastructure. Improvements are capitalized; the costs of normal maintenance and repairs that do not add to the value of the asset or materially extend an asset's life are not.

All reported capital assets are depreciated, except land. Improvements are depreciated over the remaining useful lives of the related capital assets. Depreciation is allocated using the straight-line method over the following useful lives:

<u>Description</u>	<u>Estimated Lives</u>
Building and Improvements	20-50 years
Equipment	3 -10 years

Restricted Assets

Assets are reported as restricted assets when limitations on their use change the normal understanding of the availability of the asset. Such constraints are either imposed by creditors, contributors, grantors, laws of other government or imposed by enabling legislation. Restricted assets include the amount in the private purpose trust fund that is restricted by trust agreements to be used for scholarships.

Compensated Absences

The Center reports compensated absences in accordance with the provisions of GASB Statement No. 16, "Accounting for Compensated Absences." Vacation benefits are accrued as a liability as the benefits are earned if the employees' rights to receive compensation are attributable to services already rendered and it is probable that the Center will compensate the employees for the benefits through paid time off or some other means. The Center records a liability for accumulated unused vacation time, when earned, for all employees with more than one year of service.

Sick leave benefits are accrued as a liability using the termination payment method. An accrual for earned sick leave is made to the extent that it is probable that the benefits will result in termination payments. The liability is based on the Center's past experience of making termination payments.

The entire compensated absence liability is reported on the government-wide financial statements.

For governmental fund financial statements, the current portion of unpaid compensated absences is the amount due to the employee at year end. These amounts are recorded in the account "compensated absences payable" in the fund from which the employees who have accumulated unpaid leave are paid. Compensated Absences are reported in governmental funds only if they have matured.

Southern Ohio Educational Service Center
Notes to the Basic Financial Statements
For the Fiscal Year Ended June 30, 2014

Net Position

Net position represents the difference between assets, deferred outflows of resources, liabilities and deferred inflows of resources. Net investment in capital assets, consists of capital assets, net of accumulated depreciation, reduced by the outstanding balances of any borrowings used for the acquisition, construction or improvement of those assets. Net position are reported as restricted when there are limitations imposed on their use either through the enabling legislation adopted by the Center or through external restrictions imposed by creditors, grantors or laws or regulations of other governments.

The Center applies restricted resources when an expense is incurred for purposes for which both restricted and unrestricted net position are available. Of the Center's \$5,844 in restricted net position, none were restricted by enabling legislation.

Fund Balance

In accordance with Governmental Accounting Standards Board Statement No. 54, Fund Balance Reporting, the Center classifies its fund balance based on the purpose for which the resources were received and the level of constraint placed on the resources. The following categories are used:

Nonspendable – resources that are not in spendable form (inventory) or have legal or contractual requirements to maintain the balance intact.

Restricted – resources that have external purpose restraints imposed on them by providers, such as creditors, grantors, or other regulators.

Committed – resources that are constrained for specific purposes that are internally imposed by the government at its highest level of decision making authority, the Board of Education.

Assigned – resources that are intended to be used for specific purposes as approved through the Center's formal purchasing procedure by the Treasurer.

Unassigned – residual fund balance within the General Fund that is not restricted, committed, or assigned. In other governmental funds, the unassigned classification is used only to report a deficit balance resulting from incurred expenses for specific purposes exceeding amounts which had been restricted, committed or assigned for said purposes.

The Center applies restricted resources first when an expense is incurred for purposes which both restricted and unrestricted net position are available. The Center considers committed, assigned, and unassigned fund balances, respectively, to be spent when expenditures are incurred for purposes for which any of the unrestricted fund balance classifications could be used.

Interfund Activity

Exchange transactions between funds are reported as revenues in the seller funds and as expenditures/expenses in the purchaser funds. Flows of cash or goods from one fund to another without a requirement for repayment are reported as interfund transfers. Repayments from funds

Southern Ohio Educational Service Center
Notes to the Basic Financial Statements
For the Fiscal Year Ended June 30, 2014

responsible for particular expenditures/expenses to the funds that initially paid for them are not presented on the financial statements.

On fund financial statements, receivables and payables resulting from short-term interfund loans are classified as "interfund receivables/payables". These amounts are eliminated in the governmental activities column on the Statement of Net position.

As a general rule the effect of internal activity has been eliminated from the government-wide statement of activities. The interfund services provided and used are not eliminated in the process of consolidation.

Estimates

The preparation of financial statements in conformity with generally accepted accounting principles requires management to make estimates and assumptions that affect the amounts reported in the financial statements and accompanying notes. Actual results may differ from those estimates.

Note 3 – Equity in Pooled Cash and Investments

The Center maintains a cash and investment pool used by all funds. Each fund type's portion of this pool is displayed on the statement of net position and balance sheet as "Equity in Pooled Cash and Investments."

State statute requires the classification of monies held by the Center into three categories:

Active Monies - Those monies required to be kept in a "cash" or "near cash" status for immediate use by the Center. Such monies must by law be maintained either as cash in the Center treasury, in depository accounts payable or withdrawable on demand.

Inactive Monies – Those monies not required for use within the current two year period of designated depositories. Ohio law permits inactive monies to be deposited or invested as certificates of deposit maturing not later than the end of the current period of designated depositories, or as savings or deposit accounts, including, but not limited to passbook accounts.

Interim Monies – Those monies which are not needed for immediate use but which will be needed before the end of the current period of designation of depositories. Ohio law permits interim monies to be invested or deposited in the following securities:

- (1) Bonds, notes, or other obligations of or guaranteed by the United States, or those for which the faith of the United States is pledged for the payment of principal and interest.
- (2) Bonds, notes, debentures, or other obligations or securities issued by any federal governmental agency.
- (3) No-load money market mutual funds consisting exclusively of obligations described in (1) or (2) above and repurchase agreements secured by such

Southern Ohio Educational Service Center
Notes to the Basic Financial Statements
For the Fiscal Year Ended June 30, 2014

obligations, provided that investments in securities described in this division are made only through eligible institutions.

- (4) Interim deposits in the eligible institutions applying for interim monies to be evidenced by time certificates of deposit maturing not more than one year from date of deposit, or by savings or deposit accounts, including, but limited to, passbook accounts.
- (5) Bonds, and other obligations of the State of Ohio.
- (6) The Ohio State Treasurer's investment pool (STAR Ohio).
- (7) Commercial paper and banker's acceptances which meet the requirements established by Ohio Revised Code, Sec. 135.142.
- (8) Under limited circumstances, corporate debt interests in either of the two highest rating classifications by at least two nationally recognized rating agencies.

Protection of the Center's deposits is provided by the Federal Deposit Insurance Corporation, by eligible securities pledged by the financial institution as security for repayment, by surety company bonds deposited with the treasurer by the financial institution or by a single collateral pool established by the financial institution to secure the repayment of all public moneys deposited with the institution.

Investments in stripped principal or interest obligations, reverse repurchase agreements and derivatives are prohibited. The issuance of taxable notes for the purpose of arbitrage, the use of leverage and short selling are also prohibited. An investment must mature within five years from the date of purchase unless matched to a specific obligation or debt of the Center, and must be purchased with the expectation that it will be held to maturity.

Investments may only be made through specified dealers and institutions. Payment for investments may be made only upon delivery of the securities representing the investments to the treasurer or, if the securities are not represented by a certificate, upon receipt of confirmation of transfer from the custodian.

Deposits

Custodial credit risk is the risk that in the event of a bank failure, the government's deposits may not be returned to it. The Center's policy for deposits is any balance not covered by depository insurance will be collateralized by the financial institutions with pledged securities. As of June 30, 2014, \$1,566,288 of the Center's bank balance of \$2,086,506 was exposed to custodial risk because it was uninsured and collateralized with securities held by the pledging financial institution's trust department or agent, but not in the Center's name.

Ohio Revised Code Chapter 135, Uniform Depository Act, authorizes pledging of pooled securities in lieu of specific securities. Specifically, a designated public depository may pledge a single pool of eligible securities to secure repayment of all public monies deposited in the

Southern Ohio Educational Service Center
Notes to the Basic Financial Statements
For the Fiscal Year Ended June 30, 2014

financial institution, provided that all times the total value of the securities so pledged is at least equal to 105% of the total amount of all public deposits secured by the pool, including the portion of such deposits covered by any federal deposit insurance.

Investments

As of June 30, 2014, the Center had the following investments:

	<u>Fair Value</u>	<u>Aggregate Credit Risk</u>	<u>Weighted Average Maturity (Years)</u>
Money Market Funds	<u>\$176,148</u>	<u>100.0%</u>	0.00
Total Fair Value	<u>\$176,148</u>	<u>100.0%</u>	
Portfolio Weighted Average Maturity			

Interest Rate Risk - In accordance with the investment policy, the Center manages its exposure to declines in fair values by limiting the weighted average maturity of its investment portfolio to five years.

Credit Risk – It is the Center’s policy to limit its investments that are not obligations of the U.S. Government or obligations explicitly guaranteed by the U.S. Government to investments which have a credit quality rating of the top 2 ratings issued by nationally recognized statistical rating organizations. The Center’s investments in Federal Farm Credit Bank and in Federal Home Loan Bank were rated AA+ by Standard & Poor’s and Fitch Ratings and Aaa by Moody’s Investors Service. Money Market Funds were not rated.

Concentration of Credit Risk – The Center’s investment policy allows investments in Federal Agencies or Instrumentalities. The Center had no investments in government sponsored enterprise (GSE) securities at fiscal year end.

Custodial Credit Risk is the risk that in the event of the failure of the counterparty, the Center will not be able to recover the value of its investments or collateral securities that are in the possession of an outside party. All of the Center’s securities are registered in the name of the Center.

Note 4 – Receivables

Receivables at June 30, 2014, consisted of accounts, interest, intergovernmental and interfund.

This Space Intentionally Left Blank

Southern Ohio Educational Service Center
Notes to the Basic Financial Statements
For the Fiscal Year Ended June 30, 2014

Note 5 – Capital Assets

Capital asset activity for the fiscal year ended June 30, 2014, was as follows:

	<u>Beginning Balance</u>	<u>Additions</u>	<u>Deletions</u>	<u>Ending Balance</u>
Governmental Activities				
Capital Assets, not being depreciated:				
Land	\$31,490	\$0	\$0	\$31,490
Capital Assets, being depreciated:				
Buildings and Improvements	528,710	0	0	528,710
Equipment	<u>101,330</u>	<u>0</u>	<u>26,454</u>	<u>74,876</u>
Totals at Historical Cost	<u>661,530</u>	<u>0</u>	<u>26,454</u>	<u>635,076</u>
Less Accumulated Depreciation:				
Buildings and Improvements	214,800	12,953	0	227,753
Equipment	<u>86,319</u>	<u>2,074</u>	<u>22,208</u>	<u>66,185</u>
Total Accumulated Depreciation	<u>301,119</u>	<u>15,027</u>	<u>22,208</u>	<u>293,938</u>
Governmental Activities Capital Assets, Net	<u>\$360,411</u>	<u>(\$15,027)</u>	<u>\$4,246</u>	<u>\$341,138</u>

Depreciation expense was charged to governmental functions as follows:

Support Services:	
Instructional Staff	\$145
School Administration	14,223
Fiscal	123
Central	536
Total Depreciation Expense	<u>\$15,027</u>

Note 6 – Long-Term Liabilities

	<u>Beginning Outstanding</u>	<u>Additions</u>	<u>Deductions</u>	<u>Ending Outstanding</u>	<u>Due In One Year</u>
Governmental Activities:					
Compensated Absences	<u>\$255,062</u>	<u>\$40,067</u>	<u>\$41,406</u>	<u>\$253,723</u>	<u>\$49,252</u>

Compensated absences will be paid from the fund from which the person is paid.

**Southern Ohio Educational Service Center
Notes to the Basic Financial Statements
For the Fiscal Year Ended June 30, 2014**

Note 7 - Pension Plans

School Employees Retirement System of Ohio

Plan Description

The Center contributes to the School Employees Retirement System of Ohio (SERS), a cost-sharing multiple-employer defined benefit pension plan. SERS provides retirement, disability, and survivor benefits; annual cost-of-living adjustments; and death benefits to plan members and beneficiaries. Authority to establish and amend benefits is provided by state statute per Chapter 3309 of the Ohio Revised Code. SERS issues a publicly available, stand-alone financial report that includes financial statements and required supplementary information. That report can be obtained on SERS' website at www.ohsers.org under *Employers/Audit Resources*.

Funding Policy

Plan members are required to contribute 10% of their annual covered salary and the Center is required to contribute 14% of annual covered payroll. The contribution requirements of plan members and employers are established and may be amended, up to statutory maximum amounts, by the SERS' Retirement Board. The Retirement Board acting with the advice of the actuary, allocates the employer contribution rate among four of the funds (Pension Trust Fund, Death Benefit Fund, Medicare B Fund, and Health Care fund) of the System. For fiscal year ending June 30, 2014, the allocation to pension and death benefits is 13.10%. The remaining 0.90% of the 14% employer contribution rate is allocated to the Health Care and Medicare B Funds. The Center's contributions to SERS for the years ended June 30, 2014, 2013, and 2012 were \$216,124, \$219,663, and \$209,762, respectively; contributions equaled the required contributions for each year.

State Teachers Retirement System of Ohio

Plan Description

The Center participates in the State Teachers Retirement System of Ohio (STRS Ohio), a cost-sharing, multiple employer public employee retirement system. STRS Ohio is a statewide retirement plan for licensed teachers and other faculty members employed in the public schools of Ohio or any school, community school, college, university, institution, or other agency controlled, managed and supported, in whole or in part, by the state or any political subdivision thereof. Additional information or copies of STRS Ohio's *Comprehensive Annual Financial Report* can be requested by writing to STRS Ohio, 275 E. Broad Street, Columbus, OH 43215-3771, by calling toll-free 1-888-227-7877, or by visiting the STRS Ohio web site at www.strsoh.org.

Plan Options

New members have a choice of three retirement plan options. In addition to the Defined Benefit (DB) Plan, new members are offered a Defined Contribution (DC) Plan and a Combined Plan. The DC Plan allows members to allocate all their member contributions and employer contributions equal to 9.5% of earned compensation among various investment choices. The Combined Plan offers features of the DC Plan and DB Plan. In the Combined Plan, member contributions are allocated to investment choices by the member, and employer contributions are used to fund the defined benefit payment at a reduced level from the regular DB Plan. Contributions into the DC Plan and Combined Plan are credited to member accounts as employers submit their payroll information to STRS Ohio, generally on a biweekly basis. DC and Combined Plan members will transfer to the DB Plan during their fifth year of membership unless they permanently select the DC or Combined Plan.

Southern Ohio Educational Service Center
Notes to the Basic Financial Statements
For the Fiscal Year Ended June 30, 2014

DB Plan Benefits

Plan benefits are established under Chapter 3307 of the Revised Code. Any member may retire who has (i) five years of service credit and attained age 60; (ii) 25 years of service credit and attained age 55; or (iii) 30 years of service credit regardless of age. The annual retirement allowance, payable for life, is the greater of the “formula benefit” or the “money-purchase benefit” calculation. Under the “formula benefit,” the retirement allowance is based on years of credited service and final average salary, which is the average of the member’s three highest salary years. The annual allowance is calculated by using a base percentage of 2.2% multiplied by the total number of years of service credit (including Ohio-valued purchased credit) times the final average salary. The 31st year of earned Ohio service credit is calculated at 2.5%. An additional one-tenth of a percent is added to the calculation for every year of earned Ohio service over 31 years (2.6% for 32 years, 2.7% for 33 years and so on) until 100% of final average salary is reached. For members with 35 or more years of Ohio contributing service, the first 30 years will be calculated at 2.5% instead of 2.2%. Under the “money-purchase benefit” calculation, a member’s lifetime contributions plus interest at specified rates are matched by an equal amount from other STRS Ohio funds. This total is then divided by an actuarially determined annuity factor to determine the maximum annual retirement allowance.

DC Plan Benefits

Benefits are established under Sections 3307.80 to 3307.89 of the Revised Code. For members who select the DC Plan, all member contributions and employer contributions at a rate of 9.5% are placed in an investment account. The member determines how to allocate the member and employer money among various investment choices. A member is eligible to receive a retirement benefit at age 50 and termination of employment. The member may elect to receive a lifetime monthly annuity or a lump-sum withdrawal. Employer contributions into members’ accounts are vested after the first anniversary of the first day of paid service. Members in the DC Plan who become disabled are entitled only to their account balance. If a member dies before retirement benefits begin, the member’s designated beneficiary is entitled to receive the member’s account balance.

Combined Plan Benefits

Member contributions are allocated by the member, and employer contributions are used to fund a defined benefit payment. A member’s defined benefit is determined by multiplying 1% of the member’s final average salary by the member’s years of service credit. The defined benefit portion of the Combined Plan payment is payable to a member on or after age 60. The defined contribution portion of the account may be taken as a lump sum or converted to a lifetime monthly annuity at age 50.

A retiree of STRS Ohio or another Ohio public retirement system is eligible for reemployment as a teacher following the elapse of two months from the date of retirement. Contributions are made by the reemployed member and employer during the reemployment. Upon termination of reemployment or age 65, whichever comes later, the retiree is eligible for an annuity benefit or equivalent lump-sum payment in addition to the original retirement allowance. A reemployed retiree may alternatively receive a refund of only member contributions with interest before age 65, once employment is terminated.

Benefits are increased annually by 3% of the original base amount for DB Plan participants.

The DB and Combined Plans offer access to health care coverage to eligible retirees who participated in the plans and their eligible dependents. Coverage under the current program includes hospitalizations,

Southern Ohio Educational Service Center
Notes to the Basic Financial Statements
For the Fiscal Year Ended June 30, 2014

physicians' fees, prescription drugs and partial reimbursement of monthly Medicare Part B premiums. By Ohio law, health care benefits are not guaranteed.

A DB or Combined Plan member with five or more years' credited service who becomes disabled may qualify for a disability benefit. Eligible spouses and dependents of members who die before retirement may qualify for survivor benefits. A death benefit of \$1,000 is payable to the beneficiary of each deceased retired member who participated in the DB Plan. Death benefit coverage up to \$2,000 can be purchased by participants in the DB, DC or Combined Plans. Various other benefits are available to members' beneficiaries.

Funding Policy

Chapter 3307 of the Revised Code provides statutory authority for member and employer contributions. Contribution rates are established by the State Teachers Retirement Board, upon recommendations of its consulting actuary, not to exceed statutory maximum rates of 11% for members and 14% for employers.

Contribution requirements and the contributions actually made for the fiscal year ended June 30, 2014, were 11% of covered payroll for members and 14% for employers. The Center's contributions to STRS for the years ended June 30, 2014, 2013, and 2012 were \$539,147, \$535,585, and \$497,106, respectively; 100% has been contributed for fiscal years 2014, 2013 and 2012.

Note 8- Post Employment Benefits

School Employees Retirement System of Ohio

Plan Description

In addition to a cost-sharing multiple-employer defined benefit pension plan, the School Employees Retirement System of Ohio (SERS) administers two postemployment benefit plans.

Medicare Part B Plan

The Medicare B plan reimburses Medicare Part B premiums paid by eligible retirees and beneficiaries as set forth in Ohio Revised Code (ORC) 3309.69. Qualified benefit recipients who pay Medicare Part B premiums may apply for and receive a monthly reimbursement from SERS. The reimbursement amount is limited by statute to the lesser of the January 1, 1999 Medicare Part B premium or the current premium. The Medicare Part B premium for calendar year 2014 was \$104.90 for most participants, but could be as high as \$335.70 depending on their income; SERS' reimbursement to retirees was \$45.50.

The Retirement Board, acting with the advice of the actuary, allocates a portion of the current employer contribution rate to the Medicare B Fund. For fiscal year 2014, the actuarially required allocation was .76%. Center contributions for the years ended June 30, 2014, 2013 and 2012 were \$11,424, \$11,611, and \$11,387, respectively, which equaled the required contributions each year.

Health Care Plan

ORC 3309.375 and 3309.69 permit SERS to offer health care benefits to eligible retirees and beneficiaries. SERS' Retirement Board reserves the right to change or discontinue any health plan or program. SERS offers several types of health plans from various vendors, including HMO's, PPO's, Medicare Advantage and traditional indemnity plans. A prescription drug program is also available to those who elect health coverage. SERS employs two third-party administrators and a pharmacy benefit manager to manage the self-insurance and prescription drug plans, respectively.

Southern Ohio Educational Service Center
Notes to the Basic Financial Statements
For the Fiscal Year Ended June 30, 2014

The ORC provides the statutory authority to fund SERS' postemployment benefits through employer contributions. Active members do not make contributions to the postemployment benefit plans.

The Health Care Fund was established under, and is administered in accordance with, Internal Revenue Code 105(e). Each year after the allocation for statutorily required benefits, the Retirement Board allocates the remainder of the employer 14% contribution to the Health Care Fund. At June 30, 2014, the health care allocation was .16%. An additional health care surcharge on employers is collected for employees earning less than an actuarially determined minimum compensation amount, pro-rated according to service credit earned. Statutes provide that no employer shall pay a health care surcharge greater than 2% of that employer's SERS-covered payroll; nor may SERS collect in aggregate more than 1.5% of the total statewide SERS-covered payroll for the health care surcharge. For fiscal year 2014, the minimum compensation level was established at \$20,250. The surcharge, added to the unallocated portion of the 14% employer contribution rate is the total amount assigned to the Health Care Fund. The Center contributions assigned to health care for the years ended June 30, 2014, 2013, and 2012 were \$2,470, \$2,510, and \$21,426, respectively.

The SERS Retirement Board establishes the rules for the premiums paid by the retirees for health care coverage for themselves and their dependents or for their surviving beneficiaries. Premiums vary depending on the plan selected, qualified years of service, Medicare eligibility, and retirement status.

The financial reports of SERS' Health Care and Medicare B plans are included in its *Comprehensive Annual Financial Report*. The report can be obtained on SERS' website at www.ohsers.org under *Employers/Audit Resources*.

State Teachers Retirement System of Ohio

Plan Description

STRS Ohio administers a pension plan that is comprised of: a Defined Benefit Plan; a self-directed Defined Contribution Plan and a Combined Plan that is a hybrid of the Defined Benefit and the Defined Contribution Plan.

Ohio law authorized STRS Ohio to offer a cost-sharing, multiple-employer health care plan. STRS Ohio provides access to health care coverage to eligible retirees who participated in the Defined Benefit or Combined Plans. Coverage under the current program includes hospitalization, physicians' fees, prescription drugs and reimbursement of monthly Medicare Part B premiums.

Pursuant to 3307 of the Revised Code, the Retirement Board has discretionary authority over how much, if any, of the associated health care costs will be absorbed by STRS Ohio. All health care plan enrollees, for the most recent year, pay a portion of the health care costs in the form of a monthly premium.

STRS Ohio issues a stand-alone financial report. Interested parties can view the most recent *Comprehensive Annual Financial Report* by visiting www.strsoh.org or by requesting a copy by calling toll-free 1-888-227-7877.

Funding Policy

Under Ohio law, funding for post-employment health care may be deducted from employer contributions. Of the 14% employer contributions rate, 1% of covered payroll was allocated to post-employment health care for the year ended June 30, 2014, 2013 and 2012. The 14% employer

Southern Ohio Educational Service Center
Notes to the Basic Financial Statements
For the Fiscal Year Ended June 30, 2014

contribution rate is the maximum rate established under Ohio law. The Center contributions for the years ended June 30, 2014, 2013, and 2012 were \$38,511, \$38,256, and \$35,508, 100% has been contributed for fiscal years 2014, 2013 and 2012.

Note 9 – Contingent Liabilities

Grants

The Center received financial assistance from federal and State agencies in the form of grants. The expenditure of funds received under these programs generally requires compliance with terms and conditions specified in the grant agreements and is subject to audit by the grantor agencies. Any disallowed claims resulting from such audits could become a liability of the General Fund or other applicable funds. This also encompasses the Auditor of State's ongoing review of student attendance data. However, the effect of any such disallowed claims on the overall financial position of the Center at June 30, 2014, if applicable, cannot be determined at this time.

Litigation

The Center 's attorney estimates that all other potential claims against the Center not covered by insurance resulting from all other litigation would not materially affect the financial statements of the Center.

Note 10 – Risk Management

The Center is exposed to various risks of loss related to torts, theft of, damage to, and destruction of assets, errors and omissions, injuries to employees, and natural disasters. The current facility at 3321 Airborne Road is leased from the Great Oaks Institute of Career Technology and Development. The Highland County Educational Service Center facility is leased from Hillsboro City School District. The Region 14/Hopewell facility is owned by the Cooperative Districts. The Center contracted with McGavan Governmental Underwriters for general liability educator's legal liability, excess liability, automobile, and property coverage. The plan covers the entire Center, including Region 14/Hopewell, Highland County offices, Clinton County Alternative Center and all classrooms.

The Hylant Group maintains a \$50,000.00 public official bond for the Treasurer through The Travelers Casualty and Surety Company of America One Tower Square, Hartford, Connecticut.

Settled claims have not exceeded any of the commercial coverage mentioned above in any of the past three years. There has been no significant change in any coverage from last year.

For fiscal year, the Center participated in the Southwestern Ohio EPC Workers' Compensation Group Rating Program (GRP), an insurance purchasing pool. The intent of the GRP is to achieve the benefit of a reduced premium for the Center by virtue of its grouping and representation with other participants in the GRP. The workers' compensation experience of the participating school districts is calculated as one experience and a common premium rate is applied to all school districts in the GRP. Each participant pays its workers' compensation premium to the State based on the rate for the GRP rather than its individual rate. Total savings are then calculated and each participant's individual performance is compared to the overall savings percentage of the GRP. A participant will then either receive money from or be required to contribute to the "Equity Pooling Fund". This "equity pooling" arrangement insures that each participant shares equally in the overall performance of the GRP. Participation in the

Southern Ohio Educational Service Center
Notes to the Basic Financial Statements
For the Fiscal Year Ended June 30, 2014

GRP is limited to school districts that can meet the GRP's selection criteria. The firm of Hunter Consulting, Inc. provides administrative, cost control and actuarial services to the GRP.

Note 11 – Other Employee Benefits

Compensated Absences

The criteria for determining vacation and sick leave components are set by the Governing Board and State laws. Eligible employees and administrators earn ten to twenty days of vacation per year, depending upon length of service. Accumulated vacation must be used by the end of the calendar year earned or be lost. Unused vacation time is paid to employees and administrators upon termination of employment. Teachers do not earn vacation time.

Teachers, administrators and classified employees earn sick leave at the rate of one and one-fourth days per month. Sick leave may be accumulated up to a maximum of 230 days for all personnel. Upon retirement, payment is made for twenty-five percent of the employee's accumulated sick leave with a maximum payment being limited to 35 days, unless otherwise stated in employment contract.

Health Care Benefits

The Center provides term life insurance, accidental death and dismemberment insurance to all of its eligible employees through the Southwestern Ohio Educational Purchasing Cooperative (SWOEPC), using Sun Life Insurance Company.

The Center provides health care, dental, and vision insurance benefits through the Southwestern Ohio Educational Purchasing Cooperative (SWOEPC), using the United Health Care, Delta Dental and Vision Service Plan providers.

125 Plan

The Center provides its eligible employees an option to participate in a 125 plan. Through election to participate, the employees can have their portion of their medical premiums tax exempt. Participation is renewed annually with each fiscal year during the month of September. This plan is administered by the American Fidelity Assurance Company.

Deferred Compensation

The Center provides an IRS Section 457b Plan for deferred compensation. Employees may elect to contribute "before tax" dollars into an annuity type program. The Center does not make any employer contributions. The plan is administered by ING Life and Annuity Company.

403b Plan

The Center provides an IRS Section 403b Plan. Employees may elect to contribute "before tax" dollars into a tax sheltered type program. The Center does not make any employer contributions except to those employees who are eligible for post-retirement contributions according to Center's 403b Plan Document. The plan was administered by a third party administrator, CPI Qualified Plan Consultants, Inc. until April 2014; then The Omni Group became the third party administrator.

**Southern Ohio Educational Service Center
Notes to the Basic Financial Statements
For the Fiscal Year Ended June 30, 2014**

Note 12 – Jointly-Governed Organization

Miami Valley Educational Computer Association (MVECA)

The Center is a member of the Miami Valley Educational Computer Association (MVECA) which is a technology support consortium for public schools. MVECA is a council of Governments (COG) and an association of public school districts in a geographic area determined by the Ohio Department of Education. The organization was formed for the purpose of applying modern technology with the aid of computers and other electronic equipment to administrative and instructional functions among member districts. The General Assembly of MVECA consists of two representatives, the superintendent and the treasurer, from each of the 26 participating school districts. The Board of Directors is elected from this group. The degree of control exercised by any participating district is limited to its representation on the Board. To obtain financial information; write to MVECA, 330 East Enon Road, Yellow Springs, Ohio 45387.

Region 14/Hopewell

Region 14/Hopewell is a jointly governed organization created by the Ohio Department of Education and the participating school districts to offer professional development, technical assistance, and support in areas of school improvement services, special education and early learning school readiness as well as special education and related services to children with special needs in the region. Eighteen local, city and exempted village school districts in Adams, Brown, Clinton, Fayette, and Highland counties receive services from Region 14/Hopewell. This organization is operated under regulations and policies established by the Ohio Department of Education, the Center's governing board, and its own advisory council. The Hopewell Advisory Council is made up of superintendents from the eighteen school districts plus the Center's superintendent and treasurer, developmental disabilities agencies, joint vocational school superintendents, parents of children with special needs in the region, and other members as specified in law. The Advisory Council provides recommendations to the Center regarding both the Ohio Department of Education / Region 14 Performance Agreement activities and the Hopewell Cooperative programs and services. The Center acts as fiscal agent for the Hopewell Center through a written agreement. Region 14/Hopewell receives funding from contracts with each of the member school districts and state and federal grants.

Note 13 – Group Purchasing Pools

Southwestern Ohio Educational Purchasing Cooperative (SWOEPC)

The Southwestern Ohio Educational Purchasing Cooperative (SWOEPC) is a group purchasing pool consisting of public and private school districts. The purpose of a group purchasing pool is to purchase products or services at a reduced rate. The Center participates with the SWOEPC in the purchase of supplies, audio/visual materials, and the management of unemployment and workers compensation.

Southwestern Ohio Educational Purchasing Cooperative Employee Benefit Plan Trust

The Southwestern Ohio Educational Purchasing Cooperative Employee Benefit Plan Trust (the Plan) is a group purchasing pool consisting of public and private school districts who are members of the SWOEPC (described above). The purpose of a group purchasing pool is for members to pool funds or resources to purchase group insurance products to provide health benefits to participants at a lower rate than if the

Southern Ohio Educational Service Center
Notes to the Basic Financial Statements
For the Fiscal Year Ended June 30, 2014

individual district acted independently. Each participating district pays a monthly premium to the Trust fund for insurance coverage which is provided by Anthem or United Healthcare. The Plan is governed by a Board of Trustees elected in accordance with the Trust Agreement and voted on by participating SWOEPC member districts.

Southwestern Ohio Educational Purchasing Cooperative Workers' Compensation Group Rating Plan

The Center participates in a group-rating plan for workers' compensation as established under Section 4123.29 of the Ohio Revised Code. The Southwestern Ohio Educational Purchasing Cooperative Workers' Compensation Group Rating Program (WCGRP) was established through the Southwestern Ohio Educational Purchasing Cooperative (SWOEPC) as a group purchasing pool. The WCGRP's business and affairs are conducted by a Board of Directors. The Executive Director of the SWOEPC, or his designee, serves as coordinator of the program. Each year, the participating school districts pay an enrollment fee to the WCGRP to cover the costs of administering the program.

Note 14 – Related Organization

Great Oaks Institute of Technology and Career Development (Great Oaks)

The Center appoints by law one board member to serve on the board of Great Oaks, located in Cincinnati, Ohio. This board member also represents the districts of Clinton-Massie Local and Blanchester Local, per their request. All other districts participating from the counties of Clinton, Fayette, and Highland send their own representatives.

Note 15 – State Funding

The Center is funded by the Ohio Department of Education and by its member districts through the Statement of Settlement .

The state funded portion of the settlement is broken down into two sources of revenue: gifted unit funding and per pupil funding. The gifted funding is based on the number of available units and by the information provided through the Center's Educational Information Management Systems (EMIS). The per pupil funding is based on the Average Daily Membership (ADM) of all the Center's member districts multiplied by \$35.00 minus any reduction in funding by the State.

The local funded portion of the settlement is broken down by one source of revenue: per pupil. This source of local revenue is deducted directly from the member districts' state funding formula. Per pupil funding is based on each district's ADM multiplied by \$6.50. Districts may have additional per pupil funding deducted if an agreement is on file with the Ohio Department of Education. The additional per pupil deduction is used to provide funding for specific programs or services. The Ohio Department of Education supervises the procedure under which the school districts approve or disapprove the additional funding per pupil.

Note 16 - Interfund Balances

Interfund transactions at June 30, 2014, consisted of the following individual fund receivables and payables:

Southern Ohio Educational Service Center
Notes to the Basic Financial Statements
For the Fiscal Year Ended June 30, 2014

	Interfund	
	<u>Receivable</u>	<u>Payable</u>
General Fund	\$13,994	\$0
Other Governmental Funds	<u>0</u>	<u>13,994</u>
Total All Funds	<u>\$13,994</u>	<u>\$13,994</u>

Interfund balance/transfers are used to move revenues from the fund that statute or budget requires to collect them to the fund that statute or budget requires to expend them and unrestricted revenues collected in the general fund to finance various programs accounted for in other funds in accordance with budget authorizations; to segregate and to return money to the fund from which it was originally provided once a project is completed.

Note 17 – Fund Balances

Fund balance is classified as nonspendable, restricted, committed, assigned and/or unassigned based primarily on the extent to which the District is bound to observe constraints imposed upon the use of the resources in the governmental funds. The constraints placed on fund balance for the major governmental funds and all other governmental funds are presented below:

<u>Fund Balances</u>	<u>General</u>	<u>Other Governmental Funds</u>	<u>Total</u>
Restricted for:			
Other Grants	\$0	\$5,000	\$5,000
Alternative Schools	0	6	6
Parent Mentor	0	862	862
Total Restricted	<u>0</u>	<u>5,868</u>	<u>5,868</u>
Assigned to:			
Encumbrances	<u>152,871</u>	<u>0</u>	<u>152,871</u>
Total Assigned	<u>152,871</u>	<u>0</u>	<u>152,871</u>
Unassigned (Deficit)	<u>1,865,463</u>	<u>(12,758)</u>	<u>1,852,705</u>
Total Fund Balance	<u>\$2,018,334</u>	<u>(\$6,890)</u>	<u>\$2,011,444</u>

Note 18 – Change in Accounting Principles

The Center adopted the provisions of GASB Statement Number 65, *Items Previously Reported as Assets and Liabilities*. GASB Statement Number 65 establishes accounting and financial reporting standards that reclassify, as deferred outflows of resources or deferred inflows of resources, certain items that were previously reported as assets and liabilities and recognizes, as outflows of resources or inflows of resources, certain items that were previously reported as assets and liabilities. The provisions of this Statement are effective for financial statements for periods beginning after December 15, 2012 and have been implemented by the Center.

SUPPLEMENTARY INFORMATION

Southern Ohio Educational Service Center
Schedule of Revenues, Expenditures and Changes in Fund Balance
Budget and Actual (Non-GAAP Budgetary Basis)
For the Fiscal Year Ended June 30, 2014

	General Fund			
	Original Budget	Final Budget	Actual	Variance from Final Budget
Revenues:				
Charges for Educational Services	\$2,226,363	\$2,474,023	\$2,474,023	\$0
Charges for Non-Educational Services	208,535	222,570	222,570	0
Investment Earnings	32,000	33,005	36,861	3,856
Intergovernmental	943,772	827,929	827,929	0
Other Revenues	39,800	74,852	74,852	0
Total Revenues	3,450,470	3,632,379	3,636,235	3,856
Expenditures:				
Current:				
Instruction:				
Regular	150,037	155,961	111,876	44,085
Special	716,401	744,689	534,189	210,500
Vocational	23,214	24,131	17,310	6,821
Support Services:				
Pupil	1,193,278	1,240,396	889,775	350,621
Instructional Staff	1,390,005	1,444,892	1,036,466	408,426
General Administration	61,135	63,549	45,586	17,963
School Administration	570,595	593,126	425,468	167,658
Fiscal	355,212	369,238	264,866	104,372
Operations and Maintenance	107,987	112,251	80,521	31,730
Central	595,934	619,466	444,362	175,104
Operation of Non-Instructional Services	51,673	50,730	36,390	14,340
Total Expenditures	5,215,471	5,418,429	3,886,809	1,531,620
Excess of Revenues Over (Under) Expenditures	(1,765,001)	(1,786,050)	(250,574)	1,535,476
Other Financing Sources (Uses):				
Proceeds from Sale of Capital Assets	0	306	306	0
Transfers In	234,000	275,435	275,435	0
Transfers (Out)	(303,127)	(315,097)	(228,617)	86,480
Total Other Financing Sources (Uses)	(69,127)	(39,356)	47,124	86,480
Net Change in Fund Balance	(1,834,128)	(1,825,406)	(203,450)	1,621,956
Fund Balance Beginning of Year (includes prior year encumbrances appropriated)	2,297,600	2,297,600	2,297,600	0
Fund Balance End of Year	\$463,472	\$472,194	\$2,094,150	\$1,621,956

See accompanying notes to the supplementary information.

Southern Ohio Educational Service Center
Notes to the Supplementary Information
For The Year Ended June 30, 2014

Note 1 – Budgetary Process

Annual appropriations are enacted by the Educational Service Center at the fund, function and object level of expenditures. Budgetary integration is employed as a management control device during the year for all funds. During the year, monthly supplemental appropriations were enacted. The budget figures, which appear in the statements of budgetary comparisons, represent the final appropriation amounts, including all supplemental appropriations.

As part of formal budgetary control, purchase orders, contracts, and other commitments for the expenditure of monies are recorded as the equivalent of expenditures on the non-GAAP budgetary basis in order to reserve that portion of the applicable appropriation and to determine and maintain legal compliance. On the GAAP basis, encumbrances outstanding at year end are reported as an assignment of fund balance for subsequent year expenditures for governmental funds.

At the close of each fiscal year, the unencumbered balance of each appropriation reverts to the respective fund from which it was appropriated and becomes subject to future appropriation. Encumbered appropriations are carried forward to the succeeding fiscal year and are not reappropriated.

While the Center is reporting financial position, results of operations and changes in fund balance on the basis of generally accepted accounting principles (GAAP), the budgetary basis as provided by law is based upon accounting for certain transactions on a basis of cash receipts, disbursements and encumbrances. The Schedule of Revenues, Expenditures and Changes in Fund Balances - Budget and Actual (Non-GAAP Budgetary Basis) presented for the general fund is presented on the budgetary basis to provide a meaningful comparison of actual results with the budget. The major differences between the budget basis and GAAP basis are as follows:

1. Revenues are recorded when received in cash (budget basis) as opposed to when susceptible to accrual (GAAP basis).
2. Expenditures are recorded when paid in cash (budget basis) as opposed to when the liability is incurred (GAAP basis).
3. Encumbrances are treated as expenditures for all funds (budget basis) rather than as an assignment of fund balance for governmental fund types and expendable trust funds (GAAP basis).
4. Advances in and advances out are operating transactions (budget basis) as opposed to balance sheet transactions.
5. Some funds are reported as part of the general fund (GAAP basis as opposed to the general fund being reported alone (budget basis).

Southern Ohio Educational Service Center
Notes to the Supplementary Information
For The Year Ended June 30, 2014

The following table summarizes the adjustments necessary to reconcile the GAAP basis statements to the budgetary basis statements for the General Fund.

	<u>General Fund</u>
GAAP Basis	(\$208,272)
Revenue Accruals	(47,963)
Expenditure Accruals	166,358
Proceeds of Capital Assets	(5,000)
Transfers In	275,435
Transfers (Out)	(228,617)
Encumbrances	(155,397)
Funds Budgeted Elsewhere	<u>6</u>
Budget Basis	<u><u>(\$203,450)</u></u>

This Space Intentionally Left Blank

This page intentionally left blank.

SOUTHERN OHIO EDUCATIONAL SERVICE CENTER
CLINTON COUNTY

SCHEDULE OF FEDERAL AWARDS RECEIPTS AND EXPENDITURES
FOR THE YEAR ENDED JUNE 30, 2014

Federal Grantor/ Pass Through Grantor Program Title	Federal CFDA Number	Receipts	Disbursements
<i>Educational Service Center (ESC)</i>			
<u>U.S. DEPARTMENT OF EDUCATION</u>			
<i>Passed through Ohio Department of Education:</i>			
Special Education Cluster:			
Special Education - Grants to State:			
IDEA Part B - Parent Mentor, FY14	84.027	\$ 15,160	\$ 16,396
IDEA Part B - Parent Mentor, FY13		<u>6,303</u>	<u>1,932</u>
<i>Total Special Education Grants to State (IDEA, Part B)</i>		21,463	18,328
School Improvement Grant:			
Ohio Teacher Evaluation System Grant - FY 14	84.367	-	6,195
Ohio Teacher Evaluation System Grant - FY 13		<u>7,904</u>	<u>6,784</u>
<i>Total School Improvement Grant</i>		7,904	12,979
Race to the Top Incentive Grant:			
Resident Educator - FY 14	84.395	35,700	35,700
Electronic Teacher and Principal Evaluation System - FY14		-	6,563
Ohio Principal Evaluation System - FY 13		<u>6,525</u>	<u>6,525</u>
<i>Total Race to the Top Incentive Grant</i>		42,225	48,788
Total Federal Financial Assistance for the ESC:		<u>71,592</u>	<u>80,095</u>
<i>Region 14 State Support Team (Hopewell)</i>			
<u>U.S. DEPARTMENT OF EDUCATION</u>			
<i>Passed through Ohio Department of Education:</i>			
Special Education Cluster:			
Special Education - Grants to State:			
IDEA Part B - FY14	84.027	974,887	979,551
IDEA Part B - FY13		<u>19,926</u>	<u>18,634</u>
		994,813	998,185
Special Education - IDEA			
Pre-School Grants for the Handicapped:			
Early Learning - FY14	84.173	42,342	45,958
Early Learning - FY13		12,035	11,807
Study Group Grant FY13		<u>10,000</u>	<u>10,000</u>
		64,377	67,765
<i>Total Special Education Cluster</i>		1,059,190	1,065,950
State Personnel Development Grant:			
State Personnel Development Grant - FY14	84.323	13,000	13,868
State Personnel Development Grant - FY13		<u>6,824</u>	<u>6,824</u>
<i>Total State Personnel Development Grant</i>		19,824	20,692
Total Department of Education		<u>1,079,014</u>	<u>1,086,642</u>
<i>Passed through University of Dayton</i>			
Special Education - Personnel Development to Improve Services and Results for Children with Disabilities	84.325	19,670	23,162
Total Federal Financial Assistance Hopewell:		<u>1,098,684</u>	<u>1,109,804</u>
TOTAL FEDERAL FINANCIAL ASSISTANCE		<u>\$ 1,170,276</u>	<u>\$ 1,189,899</u>

The accompanying notes to this schedule are an integral part of this schedule.

**SOUTHERN OHIO EDUCATIONAL SERVICE CENTER
CLINTON COUNTY**

**NOTES TO THE FEDERAL AWARDS RECEIPTS AND EXPENDITURES SCHEDULE
FISCAL YEAR ENDED JUNE 30, 2014**

NOTE A - SIGNIFICANT ACCOUNTING POLICIES

The accompanying Federal Awards Expenditures Schedule (the Schedule) reports the Southern Ohio Educational Service Center's (the Center's) federal award programs' receipts and disbursements. The schedule has been prepared on the cash basis of accounting.



Dave Yost • Auditor of State

INDEPENDENT AUDITOR'S REPORT ON INTERNAL CONTROL OVER FINANCIAL REPORTING AND ON COMPLIANCE AND OTHER MATTERS REQUIRED BY *GOVERNMENT AUDITING STANDARDS*

Southern Ohio Educational Service Center
Clinton County
3321 Airborne Road
Wilmington, Ohio 45177

To the Board of Education:

We have audited, in accordance with auditing standards generally accepted in the United States and the Comptroller General of the United States' *Government Auditing Standards*, the financial statements of the governmental activities, the major fund, and the aggregate remaining fund information of the Southern Ohio Education Service Center, Clinton County, (the Center) as of and for the year ended June 30, 2014; and the related notes to the financial statements, which collectively comprise the Center's basic financial statements and have issued our report thereon dated March 16, 2015.

Internal Control Over Financial Reporting

As part of our financial statement audit, we considered the Center's internal control over financial reporting (internal control) to determine the audit procedures appropriate in the circumstances to the extent necessary to support our opinion on the financial statements, but not to the extent necessary to opine on the effectiveness of the Center's internal control. Accordingly, we have not opined on it.

A *deficiency in internal control* exists when the design or operation of a control does not allow management or employees, when performing their assigned functions, to prevent, or detect and timely correct misstatements. A *material weakness* is a deficiency, or combination of internal control deficiencies resulting in a reasonable possibility that internal control will not prevent or detect and timely correct a material misstatement of the Center's financial statements. A *significant deficiency* is a deficiency, or a combination of deficiencies, in internal control that is less severe than a material weakness, yet important enough to merit attention by those charged with governance.

Our consideration of internal control was for the limited purpose described in the first paragraph of this section and was not designed to identify all internal control deficiencies that might be material weaknesses or significant deficiencies. Given these limitations, we did not identify any deficiencies in internal control that we consider material weaknesses. However, unidentified material weaknesses may exist.

Compliance and Other Matters

As part of reasonably assuring whether the Center's financial statements are free of material misstatement, we tested its compliance with certain provisions of laws, regulations, contracts, and grant agreements, noncompliance with which could directly and materially affect the determination of financial statement amounts. However, opining on compliance with those provisions was not an objective of our audit and accordingly, we do not express an opinion. The results of our tests disclosed no instances of noncompliance or other matters we must report under *Government Auditing Standards*.

Purpose of this Report

This report only describes the scope of our internal control and compliance testing and our testing results, and does not opine on the effectiveness of the Center's internal control or on compliance. This report is an integral part of an audit performed under *Government Auditing Standards* in considering the Center's internal control and compliance. Accordingly, this communication is not suitable for any other purpose.

A handwritten signature in black ink that reads "Dave Yost". The signature is written in a cursive style with a large, looping initial "D".

Dave Yost
Auditor of State

Columbus, Ohio

March 16, 2015



Dave Yost • Auditor of State

INDEPENDENT AUDITOR'S REPORT ON COMPLIANCE WITH REQUIREMENTS APPLICABLE TO EACH MAJOR FEDERAL PROGRAM AND ON INTERNAL CONTROL OVER COMPLIANCE REQUIRED BY OMB CIRCULAR A-133

Southern Ohio Educational Service Center
Clinton County
3321 Airborne Road
Wilmington, Ohio 45177

To the Board of Education:

Report on Compliance for Each Major Federal Program

We have audited the Southern Ohio Educational Service Center's (the Center) compliance with the applicable requirements described in the U.S. Office of Management and Budget (OMB) *Circular A-133, Compliance Supplement* that could directly and materially affect the Southern Ohio Educational Service Center's major federal program for the year ended June 30, 2014. The *Summary of Audit Results* in the accompanying schedule of findings identifies the Center's major federal program.

Management's Responsibility

The Center's Management is responsible for complying with the requirements of laws, regulations, contracts, and grants applicable to its federal program.

Auditor's Responsibility

Our responsibility is to opine on the Center's compliance for the Center's major federal program based on our audit of the applicable compliance requirements referred to above. Our compliance audit followed auditing standards generally accepted in the United States of America; the standards for financial audits included in the Comptroller General of the United States' *Government Auditing Standards*; and OMB Circular A-133, *Audits of States, Local Governments, and Non-Profit Organizations*. These standards and OMB Circular A-133 require us to plan and perform the audit to reasonably assure whether noncompliance with the applicable compliance requirements referred to above that could directly and materially affect a major federal program occurred. An audit includes examining, on a test basis, evidence about the Center's compliance with those requirements and performing such other procedures as we considered necessary in the circumstances.

We believe our audit provides a reasonable basis for our compliance opinion on the Center's major program. However, our audit does not provide a legal determination of the Center's compliance.

Opinion on the Major Federal Program

In our opinion, the Center complied, in all material respects with the compliance requirements referred to above that could directly and materially affect its major federal program for the year ended June 30, 2014.

Report on Internal Control Over Compliance

The Center's management is responsible for establishing and maintaining effective internal control over compliance with the applicable compliance requirements referred to above. In planning and performing our compliance audit, we considered the Center's internal control over compliance with the applicable requirements that could directly and materially affect a major federal program, to determine our auditing procedures appropriate for opining on the major federal program's compliance and to test and report on internal control over compliance in accordance with OMB Circular A-133, but not to the extent needed to opine on the effectiveness of internal control over compliance. Accordingly, we have not opined on the effectiveness of the Center's internal control over compliance.

A deficiency in internal control over compliance exists when the design or operation of a control over compliance does not allow management or employees, when performing their assigned functions, to prevent, or to timely detect and correct, noncompliance with a federal program's applicable compliance requirement. *A material weakness in internal control over compliance* is a deficiency, or combination of deficiencies, in internal control over compliance, such that there is a reasonable possibility that material noncompliance with a federal program compliance requirement will not be prevented, or timely detected and corrected. *A significant deficiency in internal control over compliance* is a deficiency, or a combination of deficiencies, in internal control over compliance with federal program's applicable compliance requirement that is less severe than a material weakness in internal control over compliance, yet important enough to merit attention by those charged with governance.

Our consideration of internal control over compliance was for the limited purpose described in the first paragraph of this section and would not necessarily identify all deficiencies in internal control over compliance that might be material weaknesses or significant deficiencies. We did not identify any deficiencies in internal control over compliance that we consider to be material weaknesses. However, material weaknesses may exist that have not been identified.

This report only describes the scope of our internal control compliance tests and the results of this testing based on OMB Circular A-133 requirements. Accordingly, this report is not suitable for any other purpose.



Dave Yost
Auditor of State

Columbus, Ohio

March 16, 2015

SOUTHERN OHIO EDUCATIONAL SERVICE CENTER
CLINTON COUNTY

SCHEDULE OF FINDINGS
OMB CIRCULAR A -133 § .505
JUNE 30, 2014

1. SUMMARY OF AUDITOR'S RESULTS

<i>(d)(1)(i)</i>	Type of Financial Statement Opinion	Unmodified
<i>(d)(1)(ii)</i>	Were there any material control weaknesses reported at the financial statement level (GAGAS)?	No
<i>(d)(1)(ii)</i>	Were there any significant deficiencies in internal control reported at the financial statement level (GAGAS)?	No
<i>(d)(1)(iii)</i>	Was there any reported material noncompliance at the financial statement level (GAGAS)?	No
<i>(d)(1)(iv)</i>	Were there any material internal control weaknesses reported for major federal programs?	No
<i>(d)(1)(iv)</i>	Were there any significant deficiencies in internal control reported for major federal programs?	No
<i>(d)(1)(v)</i>	Type of Major Programs' Compliance Opinion	Unmodified
<i>(d)(1)(vi)</i>	Are there any reportable findings under § .510(a)?	No
<i>(d)(1)(vii)</i>	Major Programs (list):	Special Education Cluster: IDEA Part B CFDA# 84.027 Preschool Subsidy CFDA #84.173
<i>(d)(1)(viii)</i>	Dollar Threshold: Type A/B Programs	Type A: > \$ 300,000 Type B: all others
<i>(d)(1)(ix)</i>	Low Risk Auditee?	Yes

**2. FINDINGS RELATED TO THE FINANCIAL STATEMENTS
REQUIRED TO BE REPORTED IN ACCORDANCE WITH GAGAS**

None

3. FINDINGS AND QUESTIONED COSTS FOR FEDERAL AWARDS

None.

This page intentionally left blank.



Dave Yost • Auditor of State

SOUTHERN OHIO EDUCATIONAL SERVICE CENTER

CLINTON COUNTY

CLERK'S CERTIFICATION

This is a true and correct copy of the report which is required to be filed in the Office of the Auditor of State pursuant to Section 117.26, Revised Code, and which is filed in Columbus, Ohio.

Susan Babbitt

CLERK OF THE BUREAU

**CERTIFIED
APRIL 7, 2015**